



Maendlelo ya VaVhenda



Mpho Witness Makwarela



Loyi i Mukona. I nhwanyana wa malembe ya nhungu.

Etlhelo ka Mukona, ku na Salani. Salani i mufana wa malembe ya nkaye.



Va ta ya mi komba tindlela to hambana leti vafana na vanhwanyana va VaVhenda va endlaka swilo ha kona.



Mukona i nhwanyana kutani loko a ku xeweta u ri “Aa!”

Na loko u xeweta yena, u hlamula a ku “Aa!”.

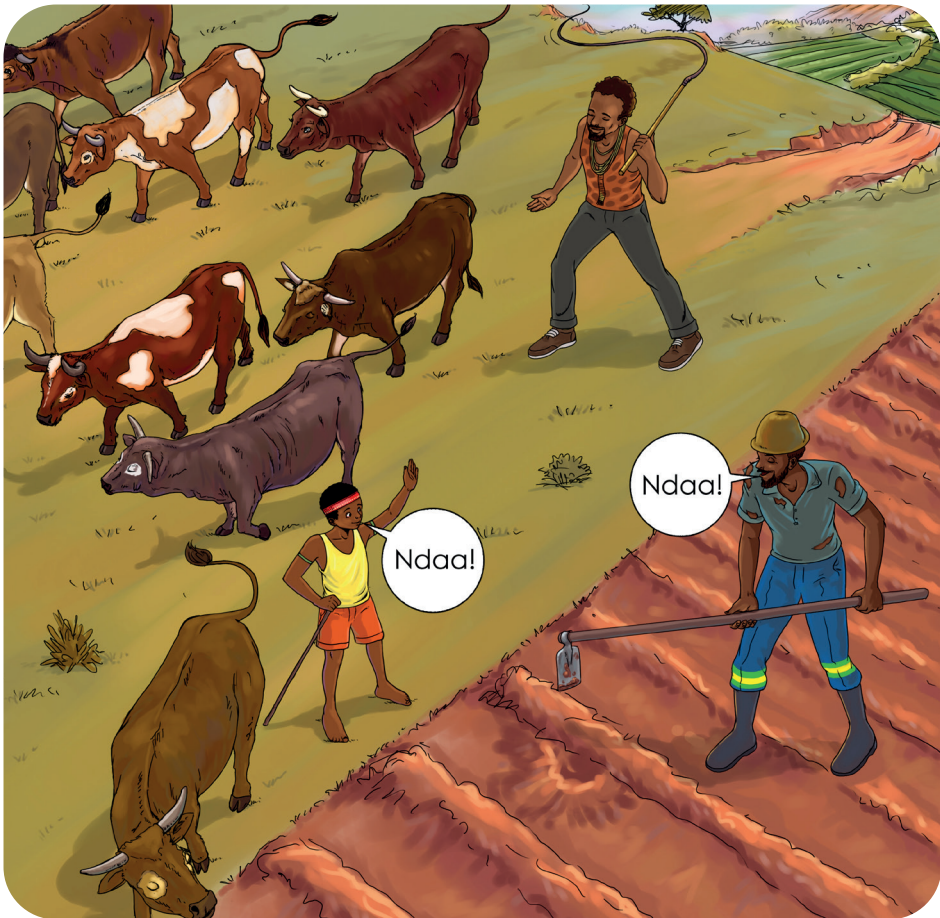


Leyi i ndlela ya ku kombisa nhlonipho na matikhomelo lamanene.



Salani i mufana kutani loko a ku xeweta u ri
“Ndaa!”.

Loko u xeweta yena, u hlamula a ku “Ndaa!”.



U endla leswi ku kombisa nhlonipho, tanihi
leswi Mukona a endlisaka xiswona.



Loko Mukona na Salani va xeweta kumbe va nyika vanhu lavakulu swakudya, va kombisa ku hlonipha.



Vanhwanyana va losa ivi vafana va khinsama. Leswi swi komba matikhomelo lamanene.



Sesi wa Mukona lonkulu u le xikolweni xa ku thwasa vunhwana lexi va xi vitanaka *khombani*.



Manana wa vona u ri lani hi laha vanhwanyana va dyondzisiwaka kona ku tihlayisa na mindyangu ya vona loko va tekiwile. Va tlhela va dyondzisiwa ku sweka kahle.



Boti wa Salani lonkulu u vuyile hi le xikolweni xa ku thwasa vununa lexi va xi vitanaka *mulani*. Vafana hinkwavo va totiwile tsumani.



Tatana wa vona u ri lani hi laha vafana va dyondzisiwaka kona ku va vavanuna, na ku hlayisa mindyangu ya vona siku rin'wana.



VaVhenda hinkwavo va tiveka hi ku sindza hi vulongo ehansi na le makhumbini ya tijindlu ta vona ta mabyanyi. Leswi swi sasekisa ehansi swinene.



Mukona na Salani va tsakela ku pfuna.



Vafana va VaVhenda va cina ncino wa *chikona*. Va cina loko ku ri na ntirho wo hlawuleka kumbe ku nyanyula ntsena.



Salani hi yena mufana lontsongo swinene,
kambe u cina *chikona* kahle swinene!
I ncino wo tsakisa swinene!



Vanhwanyana va VaVhenda va cina *domba*.
Va cina *domba* evukosini hi mintirho yo
hlawuleka.



Mukona hi yena nhwanyana lontsongo
swinene, kambe u cina *domba* kahle
swinene!

Na wona i ncino wo tsakisa swinene!



Vafana na vanhwanyana va tlhela va va na ncino wun'we wo fana lowu va wu cinaka swin'we. Va wu vitana *chifase*.

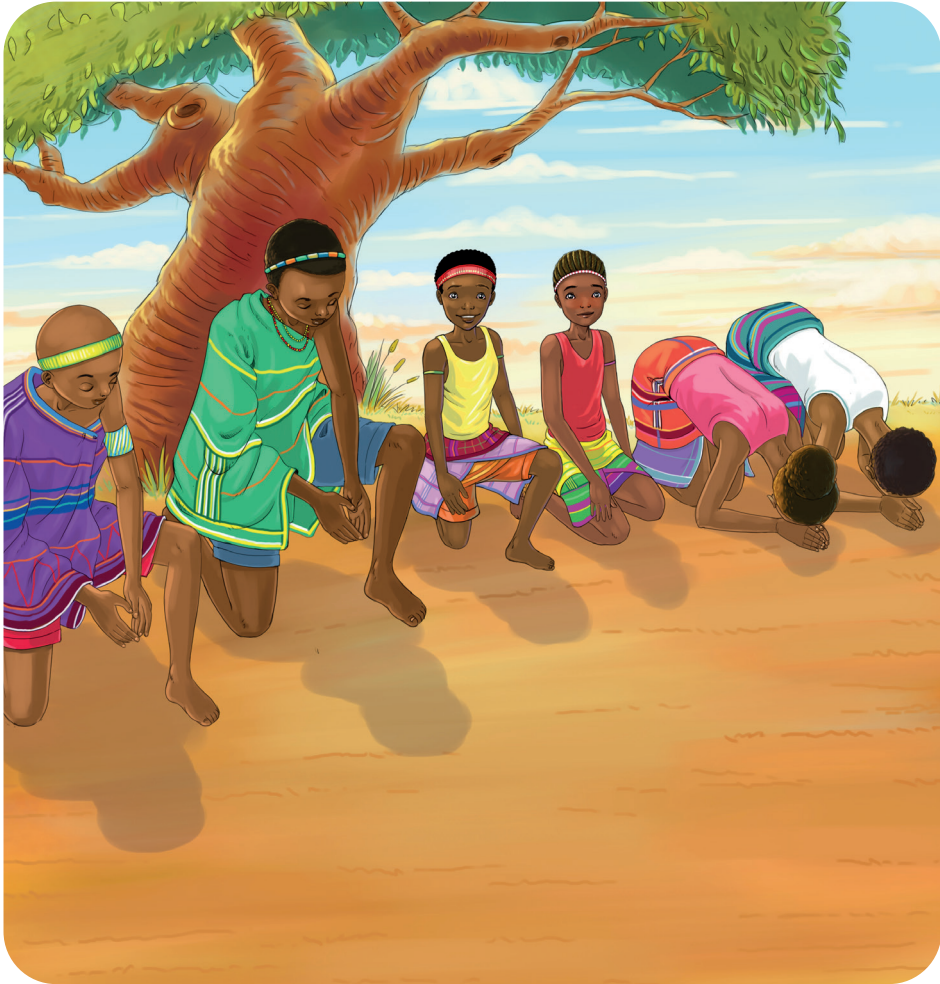
Va cina ncino lowu va ambarile swiambalo swa vona swa ndhavuko, leswi va swi vitanaka *min'wenda*.



Hinkwavo va tlangela Mukona na Salani loko va ri karhi va cina *chifase*!



VaVhenda i vanhu vo hlonipha lava nga na ndhavuko wo saseka.



Mukona na Salani va tinyungubyisa swinene hikuva VaVhenda!