



Botsalano jwa nnete



Elsie Raboshakga



Tswakae le Kgware, ntša ya gagwe, ba ya mabenkeleng. Tswakae o pagame baesekele mme Kgware e taboga fa thoko ga yone. Tswakae le Kgware ba itumeletse go tsamaya kwa ntle. Ba rata go leba bontle jwa naga.



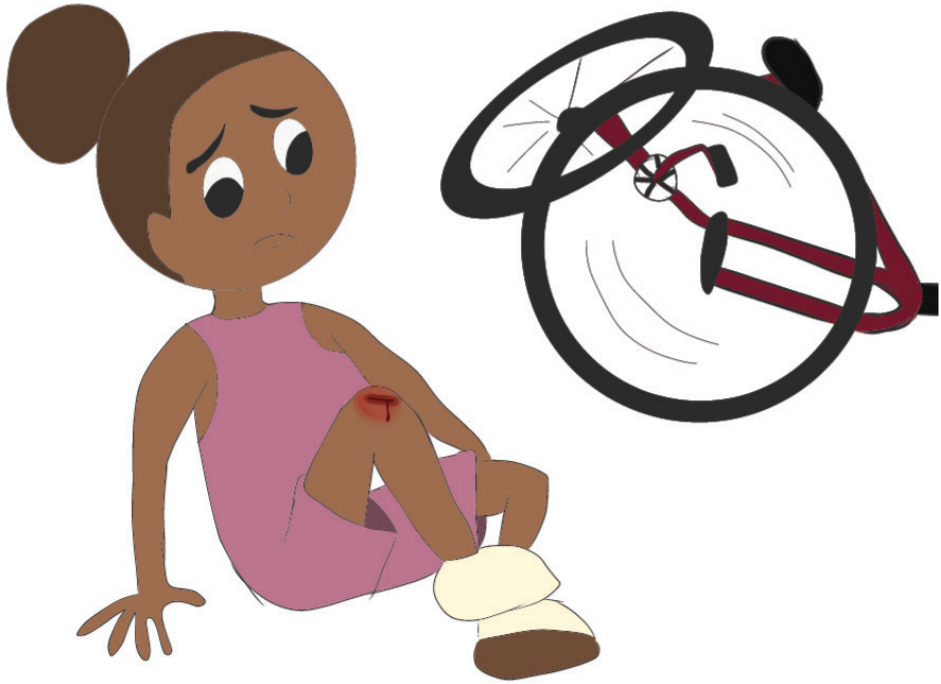


Tswakae le Kgwara e ne e le ditsala tota.
Ba ne ba dira tsotlhe mmogo e bile ba ya
gotlhe mmogo. Ba ne ba phela jana letsatsi
le letsatsi. Tswakae a rata Kgwara ka pelo ya
gagwe yotlhe. Kgwara e mo rata fela jalo.



Ba ne ba natefetswe ke letsatsi mme ba itumetse. Nako le nako Tswakae o ne a emisa dinao tsa gagwe mo moweng. Kgwara e ne e ntse e ntsheditse loleme kwa ntle. Ditsebe tsa yone di phaphaletse mo moweng. Dinaka tsa baesekele tsa simolola go reketla. “Ijoo! Ke ya go ema jang?” Tswakae a thula lejenyana mme a wela fa fatshe.

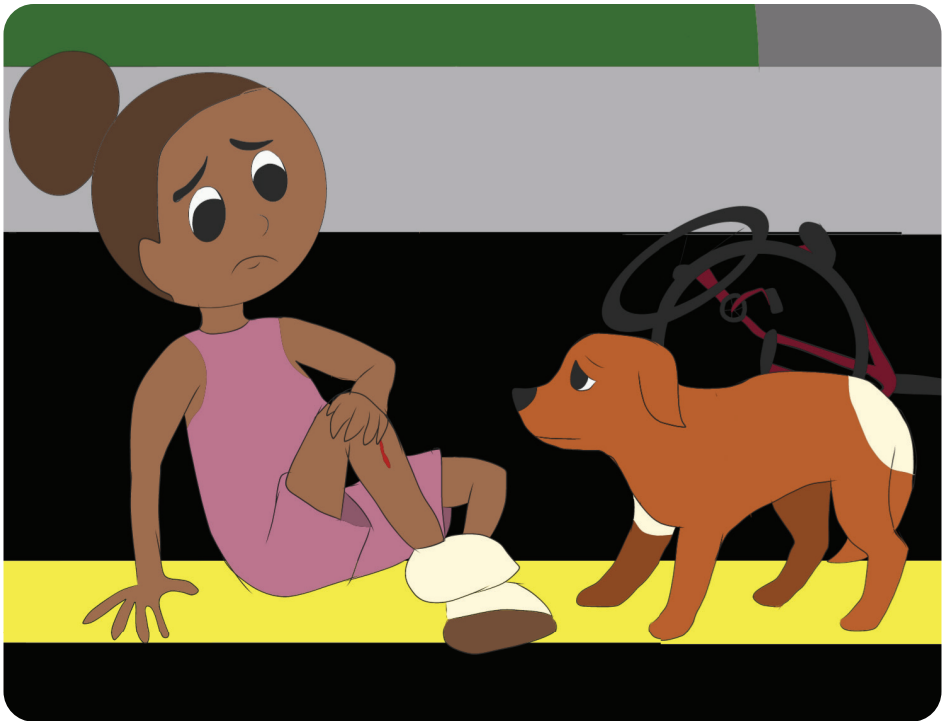




Baesekele ya wela kgakajana le Tswakae.
Ao! Tswakae o gobetse mo lengweleng. O
tswa madi. Kgwara a mo leba mme a lemoga
gore tsala ya gagwe e utlwa bothhoko.
Tswakae o palelwa ke go ema. Ijoo! Kgwara
e mo mathateng. E tlaa thusa tsala ya gagwe
jang?



Kgwara ya bona basimane mme ya ba bogola. “A re tshabebeng. Ntša e tšile go re loma.” Basimane ba tshaba. Kgwara e mo mathateng. Ya boela kwa go Tswakae. Ya potologa Tswakae e ntse e bogola.

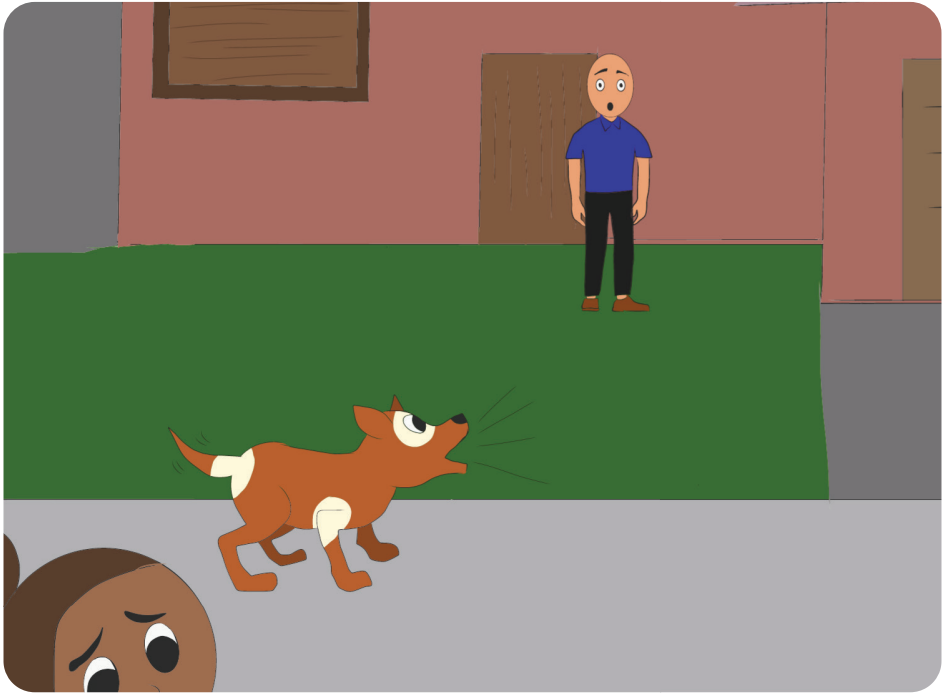


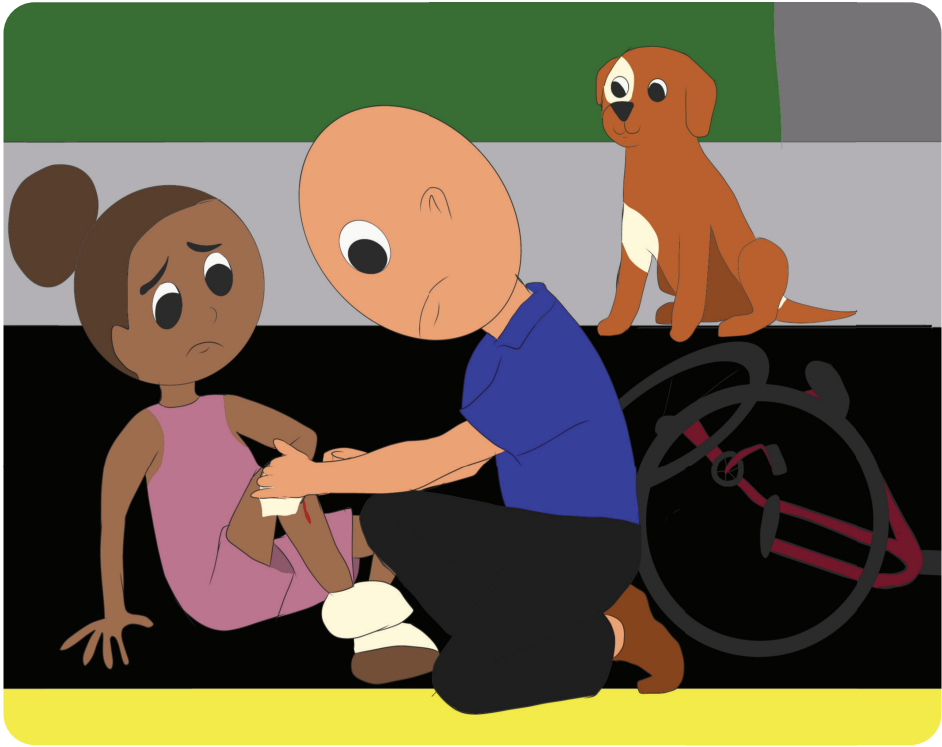


Tswakae o ne a wetse fa bophaphatong jwa tsela gaufi le ntlo ya moagisani. Kgwara ya bogola e sa fetse. Moagisani a bula letlhabaphefo mme a bona ntša e bogola. A e tlhokomologa. Kgwara ya tlhoka thuso mme ya boela kwa go Tswakae.



Kgwara ya boela ya bogola thata fa pele ga ntlo ya moagisani. Moagisani a tswela kwa ntle a gakgametse. A ema fa mojako mme a bona mosetsana a wetse fa fatshe. A tabogela kwa go ena.





Monna wa moagisani a lekola mosetsana. A lemoga gore Tswakae o gobetse mo lengweleng e bile o tswa madi. A goa mosadi wa gagwe go tliša lebokoso la thuso ya potlako. Mosadi wa gagwe a a taboga ka lebokoso la thuso ya potlako le le sejana sa metsi a bothitho a sesepa a go tšhapa diatla.



Kgwara e a dikologa, e batla go bona gore go diragala eng. Monna o ne a lemoga gore Tswakae o dutla madi thata. A tshwanela ke go dira thuso ya potlako ka bonako.





Monna a simolola ka go tlhapa diatla. A bula lebokoso la thuso ya potlako go ntsha diatlana mme a di rwala. O ne a netefatsa gore Tswakae o ntse sentle. Monna a baya lesela fa godimo ga ntho ya ga Tswakae mme a gatelela go le go nnye.



Madi a tswelera go dutla. Monna a baya lesela le lengwe gape. A tswelera ka go gatelela ditshika go emisa madi. Madi a nna a tswelera go dutla. Monna a baya lesela le lengwe gape.





Monna a tswelela ka go gatelela ditshika ka menwana. Masela a ne a ntse a apesitse ntho. A emisa Tswakae gore madi a emise ka go dutla. O ne a netefatsa gore Tswakae o ntse sentle.



Morago ga sebakanyana, madi a emisa go dutla. Monna a tlhapa diatla a bo a di phimola. A tlhapisa ntho ka metsi a sesepa. A tshasa moriana o o thibelang dikokwanatlhoko, a bo a e bofa ka lesela le lengwe gape le le phepa.





Kgwara e ne e ntse e potologa Tswakae e tsokotsa mogatla. E ne e batla go bona se se diragalang. Go bogola ga yone e le ga kutlobotlhoko. Tswakae o ne a bua le Kgwara nako le nako. Monna a fetsa go tlhatswa ntho ya ga Tswakae.



Batho ba ne ba kgobokane fa bophaphatong jwa tsela go bona se se diragalang. Monna a ba kopa gore batho ba siroge gore Tswakae a kgone go bona mowa. A kopa mosadi wa gagwe go isa didiriswa kwa ntlung. Fa mosadi a boa, ba thusa Tswakae go ema. Ba tsenala le ena ka fa ntlung ya bone. Ba mo nnisa mo setulong.

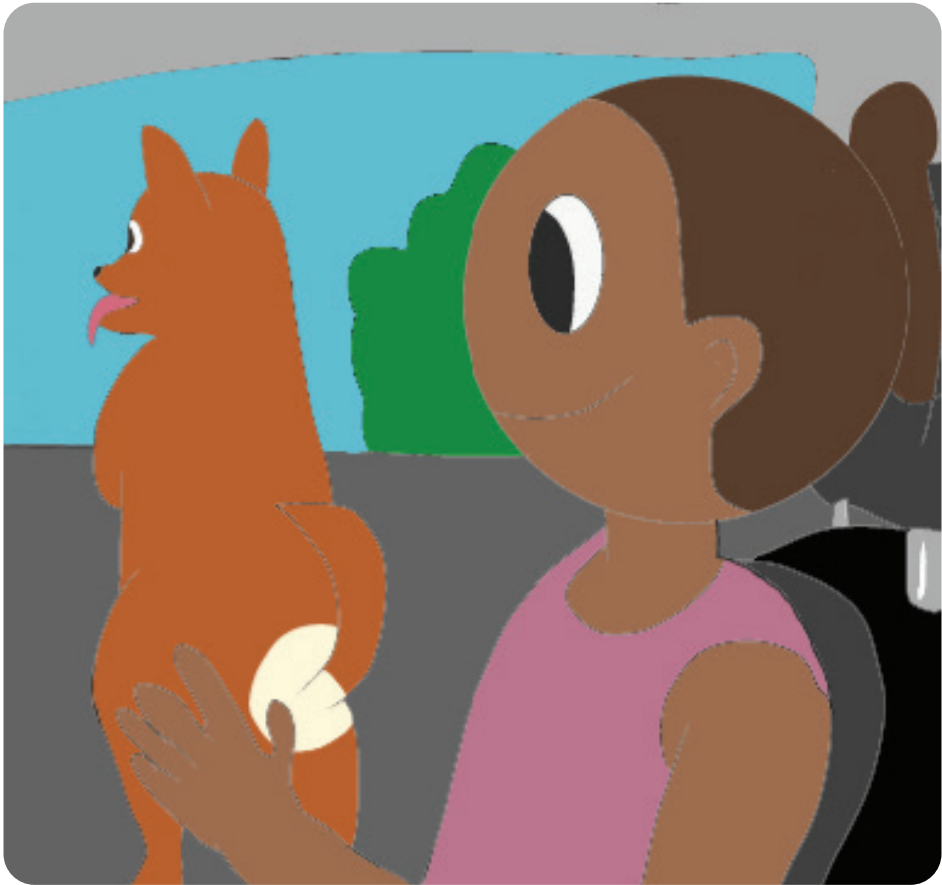




Monna a botsa Tswakae gore o nna kae. Tswakae a mo bolelela gore o nna gaufinyana. A ba naya dinomoro tsa mmaagwe tsa mogala. Monna a letsetsa mmaagwe mogala.



Batsadi ba ga Tswakae ba ne ba setse tshwenyegile fa ba amogela mogala. Ba ne ba tshwenyegile ka mabenkele a ne a se kgakala le legae. Monna a ithaopa go isa Tswakae le Kgwara gae. O ne a ba pega kwa pele mo lorinyaneng. Baesekele a e pega kwa morago.





Ba ile ba fitlhela batsadi ba ga Tswakae ba tshwenyegile thata. Ba ne ba akanya fa ngwana wa bone a gobetse bobbe. Mmaago Tswakae o ne a itumela thata go bona lorinyana e tseno ka kgoro. Kgware e ne e ntshise tlhogo ka letlhabaphefo.



Monna a folosa Tswakae le baesekele.
Kgwara ya tabogele go Mmaago Tswakae.
Ya bogola ya bo ya bogola e ntse e tsokotsa
mogatla. Monna o ile a tthalosetsa batsadi
ba ga Tswakae ka se se diragetseng. Ba ne
ba mo leboga thata ka go thusa ngwana wa
bone. Ba phophotha le Kgwara tlhogo go e
leboga.

