

# Morei wa ditlhapi

Setswana

Kgato

3A



Elias Makhapa



## **Medumopuo (e e boeleditsweng)**

nk, nt

## **Medumopuo (e mešwa)**

hl, tlh

### **Morei wa ditlhapi**

**Setswana**

**Kgato: 3A**

ISBN: 978-1-77981-670-2

© 2023 Ulwazi Lwethu African Languages Literacy Project

Mokwadi: Elias Makhapa

Moranolodi: Eva Tukisi

Motshwantshi: Ntibile Zonke

Thadiso le setshwano: Rock Bottom Graphic & Design

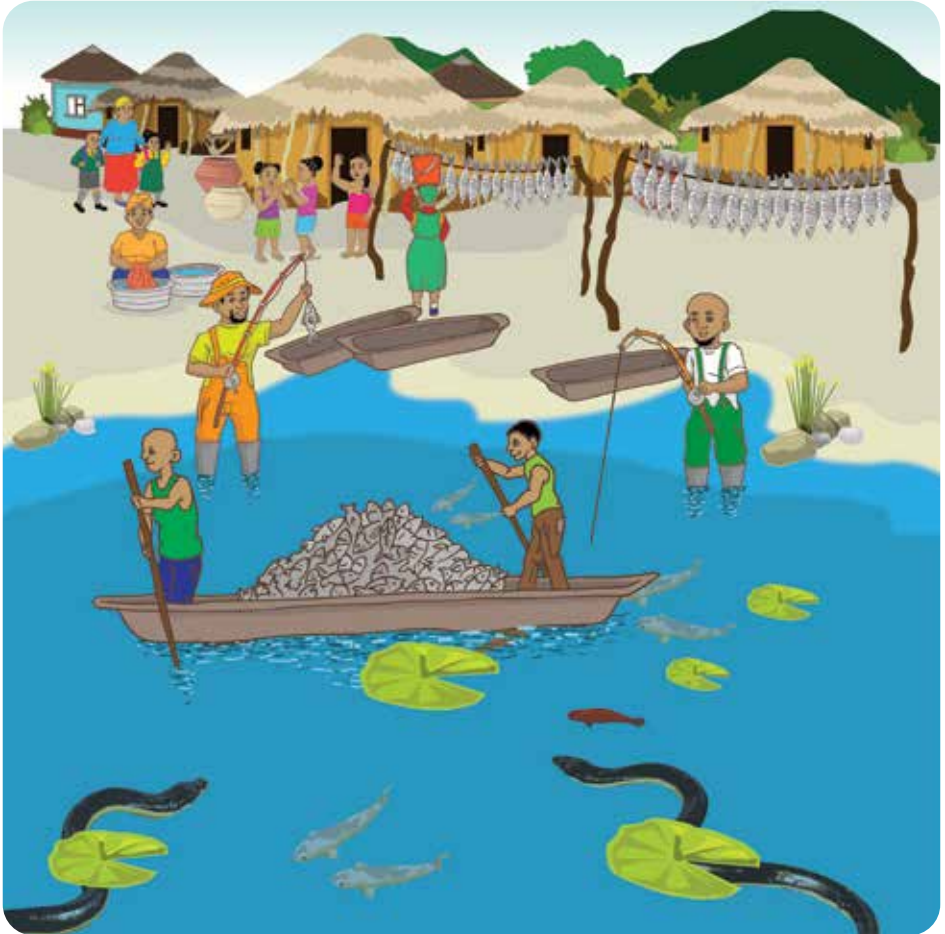
Kgatiso ya nthla 2023.

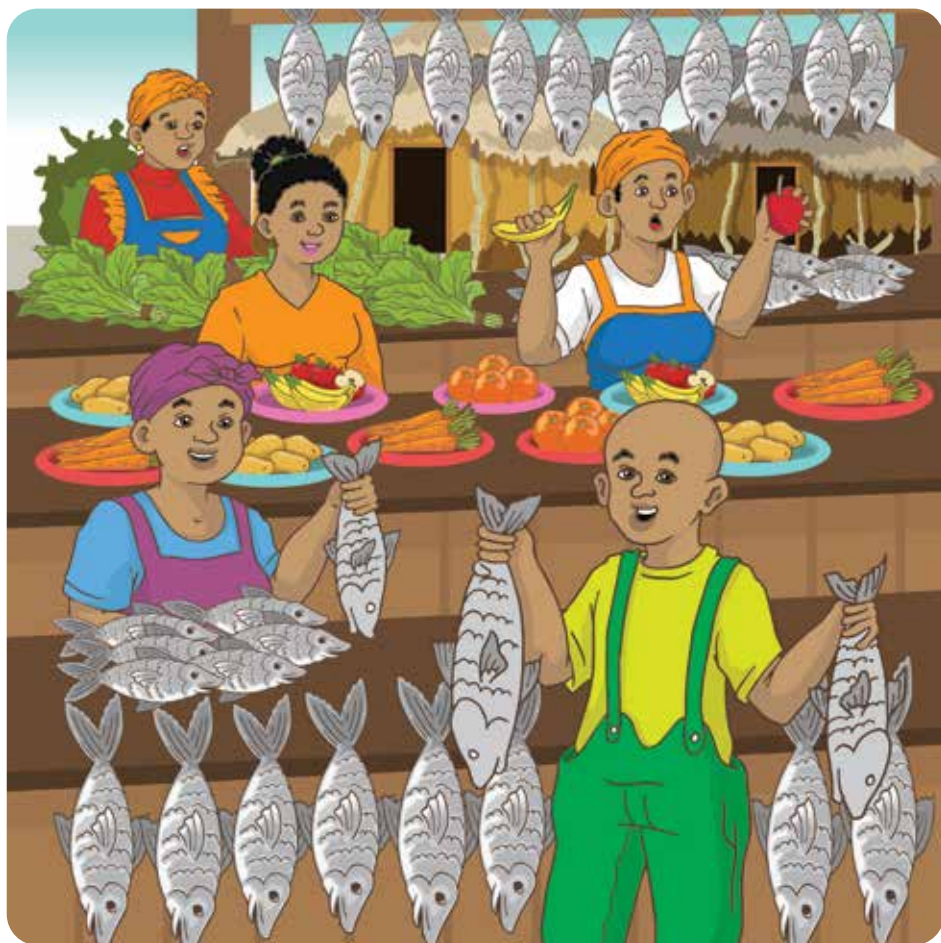
# Morei wa ditlhapi



**Elias Makhapa**

Letamo la Dithabeng le tumile ka dithapi tse di monate. Letamo le, le ratiwa thata ke barei ba dithapi. Letamo la Dithabeng le tumile gape le ka dinoga tsa metsing. Tlhara ke mosimane o bothale wa Tlhabane wa go rata go itse dilo tsothe.

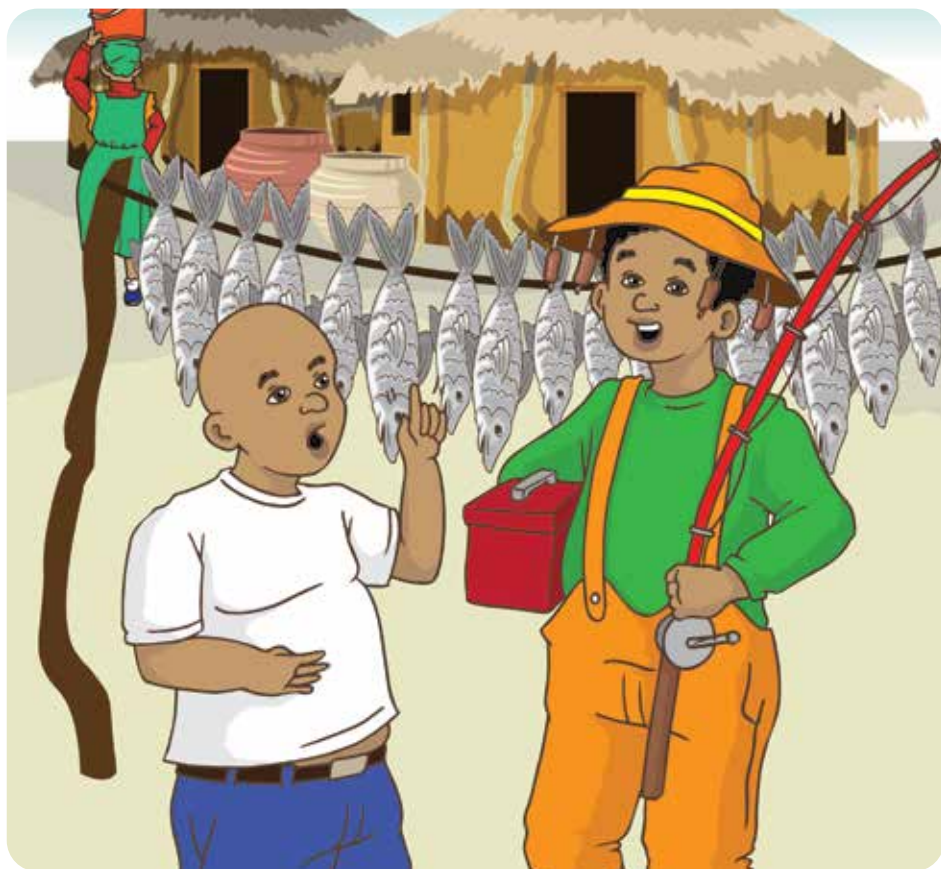




Tlhara le batsadi ba'gwe ba ne ba dula fa gaufi le letamo la Ditlhabeng. Bontsi ba badudi ba motse o, ba tshela ka go rea/thea ditlhapi. Bangwe ba ne ba di rekisa fa bangwe ba di ja ka malapeng a bone. Go ne go se na tlala mo motseng wa Tlhabane.

Tlhara le ene o rata go nna morei wa ditlhapi. Ka metlha yotlhe o kopa rraagwe go mo rekela sekgoge. Rraagwe o ne a dumela le fa a ne a itlhokela. O ne a leka ka metlha go reka sekgoge fela a sitwa./tlhologa.





Tsatsing leo rraagwe a mo reketseng sekgoge, o ile a itumela thata. Bothata ke gore o ne a tshaba go ya letamong a le esi. Tlhara o ile a ya go tsala gagwe, Letlhokwa. Letlhokwa o ile a gana/latola go ya le ene letamong. O ile a ya go Ntaote. Ntaote le ene a latola/gana a re ga a batle go bona dinoga tsa metsi.

Jaanong o tla dira jang? O rata go rea/thea ditlhapi go thusa rraagwe. Rraagwe o rekisa ditlhapi borekelong. O batla seo ka pelo le mowa.

Tlhara a iteta sefuba a ya a le esi letamong. A latlhelasekgoge sa gagwe letamong. Fa a nagana gore jaanong o reile/theile tlhapi, a bona noga ya metsi e sesela kgaufi le ene.







A gakololela ditaba tsa Ntaote. Mmalo! A phutha sekgoge sa gwe a tshabela gae. A boela gae a sa rea/thea sepe. Rragwe a botsa gore ke eng a sa tla le tlhapi ka letsatsi la gagwe la ntlha. Tlhara a swaba go bua gore o tshabile noga ya metsi. A re ga go na tlhapi e kileng ya atamela gaufi le sekgoge sa gagwe.

Letsatsing le le latelang, Thara a tsoga gape e sa le mo mosong. A tsogelela ditsala tsa gagwe go ba kopa go ya le ene letamong. Bone ba ile ba gana gape. Ba re ga ba batle go atamela letamong. Ba boifa dinoga tsa metsi.





Tlhara o tselegile, o tla tsamaya le mang? A le esi, gone, nyaa, le fa pelo e batla go rea/thea ditlhapi. O ipona e le morekisi o mogolo wa ditlhapi mo motseng.

Letsatsi le le latelang, a ya go rre Matlhoko.  
A kopa rre Matlhoko go ya le ene letamong.  
Rre Matlhoko a dumelana le ene. Tlhara a  
ikutlwa a itumetse mme a ikaelela go rea/  
thea ditlhapi tse dintsi.





Rre Matlhoko o ne a itse letamo la Ditlhabeng tota. A re ba ye lethakoreng leo go se nang dinoga tsa metsi. Rre Matlhoko ke morei/ mothei wa bogologolo wa ditlhapi. Tlhara a lokologa mo pelong ka tshoetso/tshwetso e.

Ba latlhela dikgoge tsa bone ba leba.  
Sekgoge sa Tlhara se bonala se sisinyega.  
Go ra gore tlhapi e teng.





Rre Mathoko a laela Tlhara gore a goge ka lebelo ka gore tlhapi e lomile sekgoge. Tlhara a goga, a goga, a ba a ema ka dinao. Go ile ga tswelelela tlhapi e ntle e kgathisang. Rre Mathoko a tsaya tlhapi eo senepe. A e kala, a re ke e tona thata.

Sekgoge sa ga rre Matlhoko le sone se a sisinyega. A phakisa go se gogela ka fa ntle. A e goga, ga tswelelela ?? . O ile a itumela gonne ke mofuta wa tlhapi o a o ratang thata.







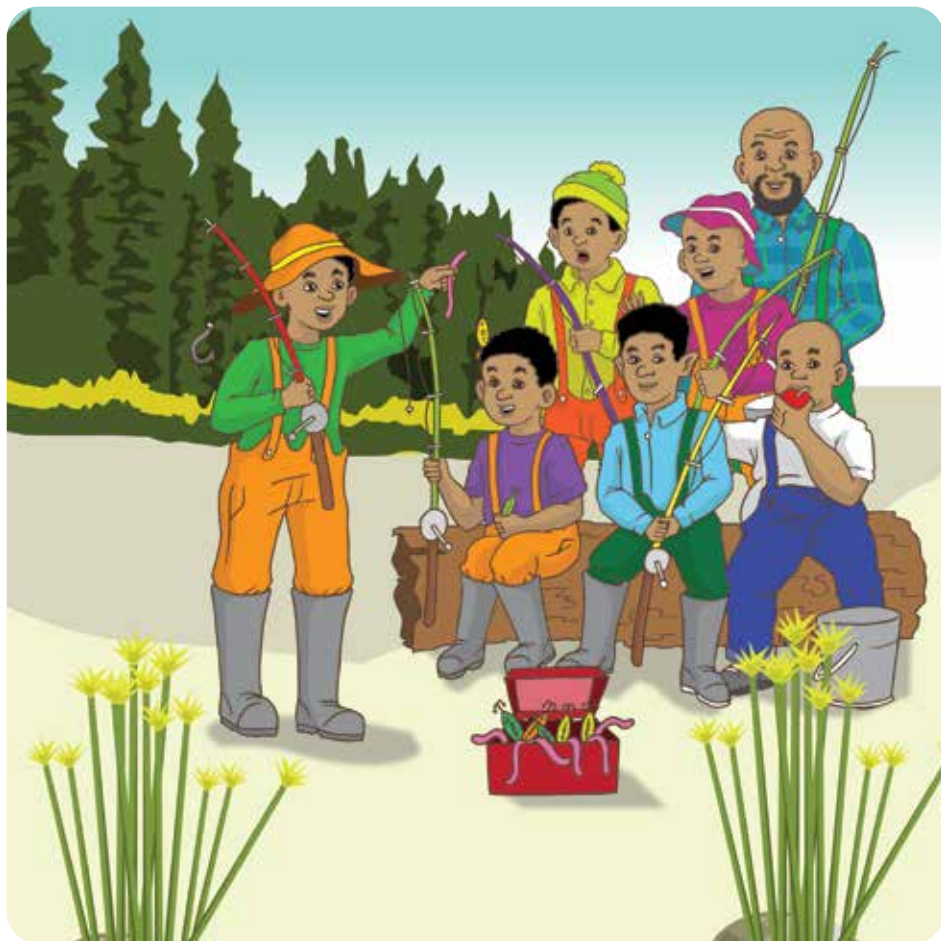
Le yone?? A e tsa senepa. Letsatsing leo, ba boela gae mongwe le mongwe a tshotse tlhapi ya gagwe. Tlhara a tsena gae ka lethabo. Sefatlhego sa gagwe se edile. A bososela/nyenya tota.

Fa matsatsi a boikhutso a ga rre Matlhoko a fela, Tlhara a gakologela ka fao a ileng a mo thusa ka teng. A ultwa bothoko gonne o ile go ya letamong a le esi.



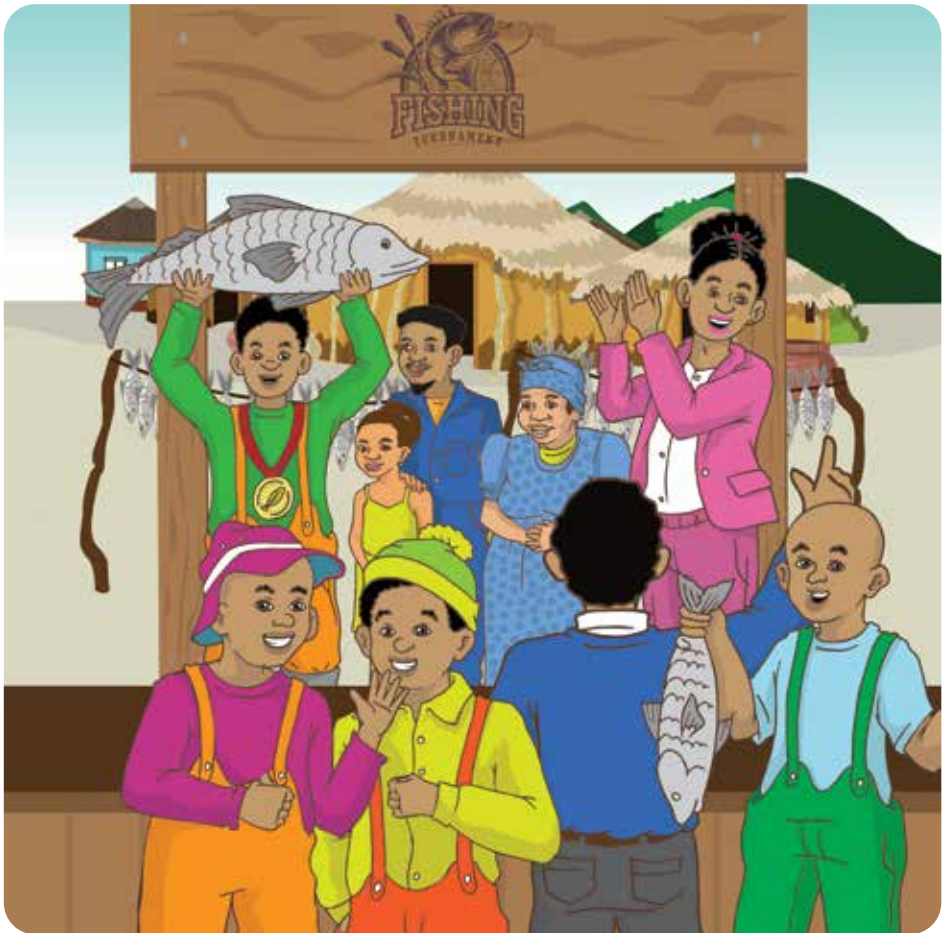


Ka matsatsi fa a ile letamong, o boela gae a tshwere ditlhapi tse dintsi fela. Lehlokwa le Ntaote ba rata go mo kopa ditlhapi. Ga a dumele. O ba gopotsa ka fao ba neng ba sa rate go ya le ene letamong.



Go nna le tsebe, tlhompho le lerato go bare/  
batheii ba bangwe ke maitshwaro a mantle.  
Tlhara a bopa setlhopa se se tiileng sa  
barei ba ditlhapi. Maloko a ntlha ke Ntaote  
le Letlhokwa. Rre Matlhoko le ene o ne a le  
teng.

Maloba mo, Tlhara o tsere sekgele go  
mampodi o a tumileng mo tikologong ya  
bone. Maabane e ne e le phadisano ya  
ngwaga mo letamong la Ditlhabeng. Go ne  
go kopana barei/bathei go tswa kgakala le  
gaufi.





E ne e se motho e le tlang le bone letamong la Dithabane. Sethopa sa Tlhara se ile sa thopa sekgele sa go lekana dikete tse tlhano tsa diranta. Rre Matlhoko e ne e le mongwe wa maloko a sethopho sa ga Tlhara. Gompiono ba keteka tlholo ya bone ka boitumelo kwa gaabo Tlhara.



## Readers

### Kgato 1

- Molelo
- Nna bonolo, Malebo
- Namune e e bonolo
- Sebati le segokgo
- Pako o a penta
- Esele
- Go bala meropa
- Pula ya semaka
- Lebo o a emaema
- Komelelo
- Yuna o gobetse
- Noga
- Lerato la Mogale le Morero
- Bana ba thusang
- Di ka fofa?
- Sopo e monate
- Yuna o a makala
- Basetsana ke Badisa
- Meriri e megolo
- Jobe ga a robale
- Rre o tla boa leng?
- Ba kwa polaseng
- Jase e Fetogile
- Lerato la Mawelana

### Kgato 2

- Mosebetsi le manaane.
- A re bolokeng metsi
- Metsi ka mo le ka mo
- Monyanyi wa mathaithai
- Mosese wa Mebalabala
- Sebelane sa ga Tinyeko
- Go utlwelela dijo tsa setso
- Bula, tswala, tswelelsa
- Ditlhako tsa Rethabile
- Motshameki yo o kgethegileng
- Leseka la gauta
- Tsalatsala, mosetsana wa sengangabele
- Leano la ga Mmolotsi
- Bolo e timetse
- Dimpho
- Mmutla wa mathajana

### Kgato 3

- Go gola ga Segwagwa
- Molemuri Morwesi le dikgabo
- Monwedi le dithuthunswane
- Monate wa motogo
- Molemo wa Phodiso
- Kwena e e kgopo
- Motswako o Molemo
- Moswana wa Mogale
- Morei wa ditlhapi
- Ga ke rate merogo!
- Dipoo di a itefeletsa
- Ke tse kgolo mo go nna!
- Mosetsana yo o bothhale
- Setlhako se sentle
- Mefuta ya Dinamelwa
- Basimane ba bothhale
- O a tlhobaela
- Bolwetse jwa Mofikela
- Botsalano jwa nnete
- Go fetoga

### Kgato 4

- Dinotshe
- Phatso o itumetse!
- Ditsala ka dinako tsotlhe
- Molalatladi wa ga Lorato
- Mekgwa ya botshelo ba baVenda
- Mofikela wa dikolobe
- Keletso ya ga Maano e fetoga nnete
- Thapelo o tshwara legodu
- Gontse o tiisa mmele wa gagwe
- Rre wa rona, motlhatheledi wa diphologolo

### Kgato 5

- Mae a Soso a a timetseng
- Mama Afrika, Mirriam Makeba
- Go thusa rremogolo go fola
- Peo ya dikgakgamatso
- Molemo o itse nako.
- Leeto go ya serapeng sa diphologolo
- Ditlhare tsa Afrika Borwa
- Toro ya ga Phenyo

**ZENEX**  
FOUNDATION

**MOLTENO**  
INSTITUTE FOR LANGUAGE AND LITERACY  
EST. 1974



Ulwazi Lethu ke setheo se se simolotsweng le go tshegetswa ka madi ke Zenex Foundation go tokafatsa motseletsele wa dibuka o o kwadilweng go ya ka dikgato le ya boitapoloso mo babusing ba dipuo tsa seAforika mmogo le didiriswa tsa tshegetso ya morutabana. Motseletsele o, o kwaletse gore o rute le go tshegetsa barutwana ba Kgato ya motheo gore ba tokafatse puiso le tlhologanyo ya bona ya Puo ya gae. Dibuka tse tsa puiso, di tlhagelela ka diteme di le robongwe tsa seAforika, ka tirisano mmogo le Molteno Institute for Language and Literacies, Nelson Mandela Institute, Room to Read South Africa, le Saide. Didiriswa tsotlhe di tsweliswa jaaka “Open Education Resources” (OER).

Please visit our website to download the full copy of this reader:  
[ulwazilwethu.org.za](http://ulwazilwethu.org.za)



Creative Commons Attribution-  
NonCommercial-NoDerivatives  
(CC BY-NC-ND) 4.0  
International Licence

Disclaimer: You are free to download and share this work as long as you attribute Zenex Foundation, but you may not change this work in any way or use it commercially.

