



Lwendo lwa u ya vhugalaphukha



Zandile Malaza

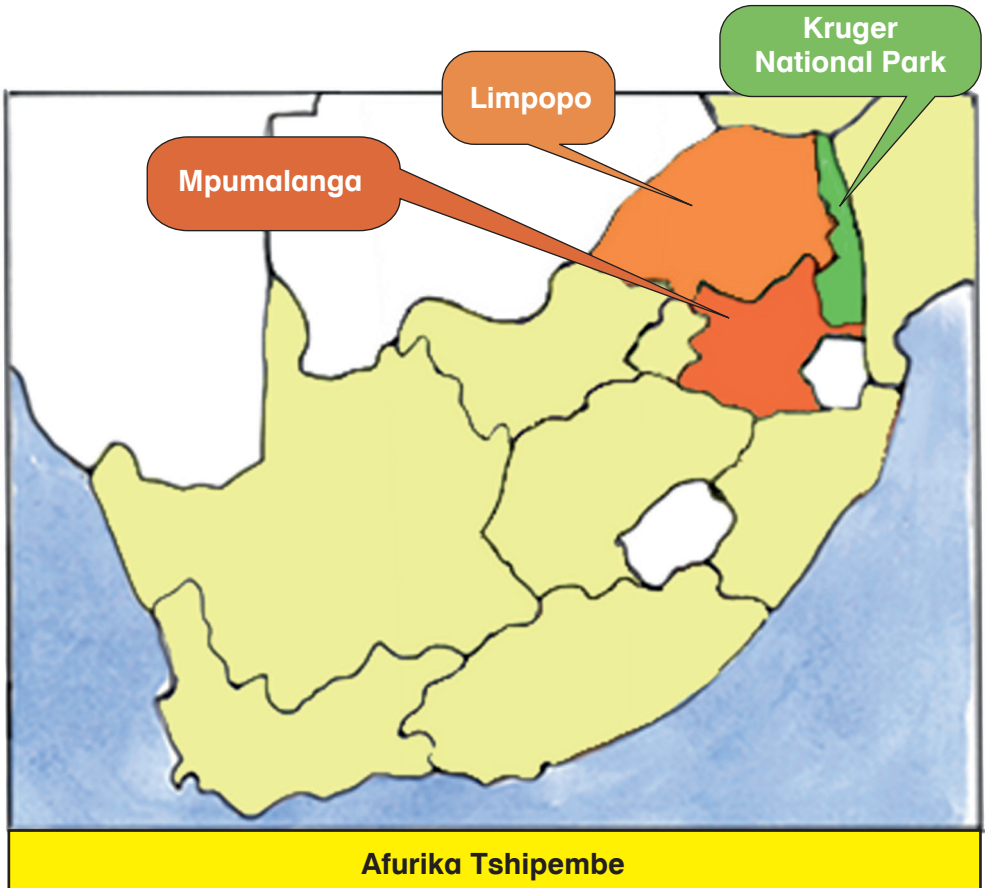


Ndi mafheloni a vhege nahone kɩlasi yashu i khou dalela Kruger National Park. Vhuniwe ha vhugalaphukha vhuhulwane kha shango.



Arali na sedza kha mapa, ni do vhona uri vhu
tanganyisa Mpumalanga na Limpopo.

Ro takalesa!





Nga matsheloni, ra ṭangana na ane a ɔo ri tshimbidza, ane a vha mutandudzi.

“Ndi matsheloni, vhana! Ndi pfhi Wama,” u ralo. “Iyi phakha ndi fhethu ho fhumulaho, nga zwenezwo ri ambele fhasi.”





Ra tshimbila phakhani.

Hu si kale Wama a imisa basi. A sedza nga tshivhonakule tshawe. O takalesa!

“Ni khou vhona tshipuka tshi re na vhukuse ha zwithoma, tshi re kha tshelede yashu ya R200?” u ralo, u vhudzisa o sumba muri muhulwane.

Eya! Khetshi! Ri khou vhona didingwe kha davhi la muri. Ri na mashudu!

Ni thogomele, nguluvhedaka! Ni thogomele, phala! Hu na didingwe li re na ndala nga thungo!







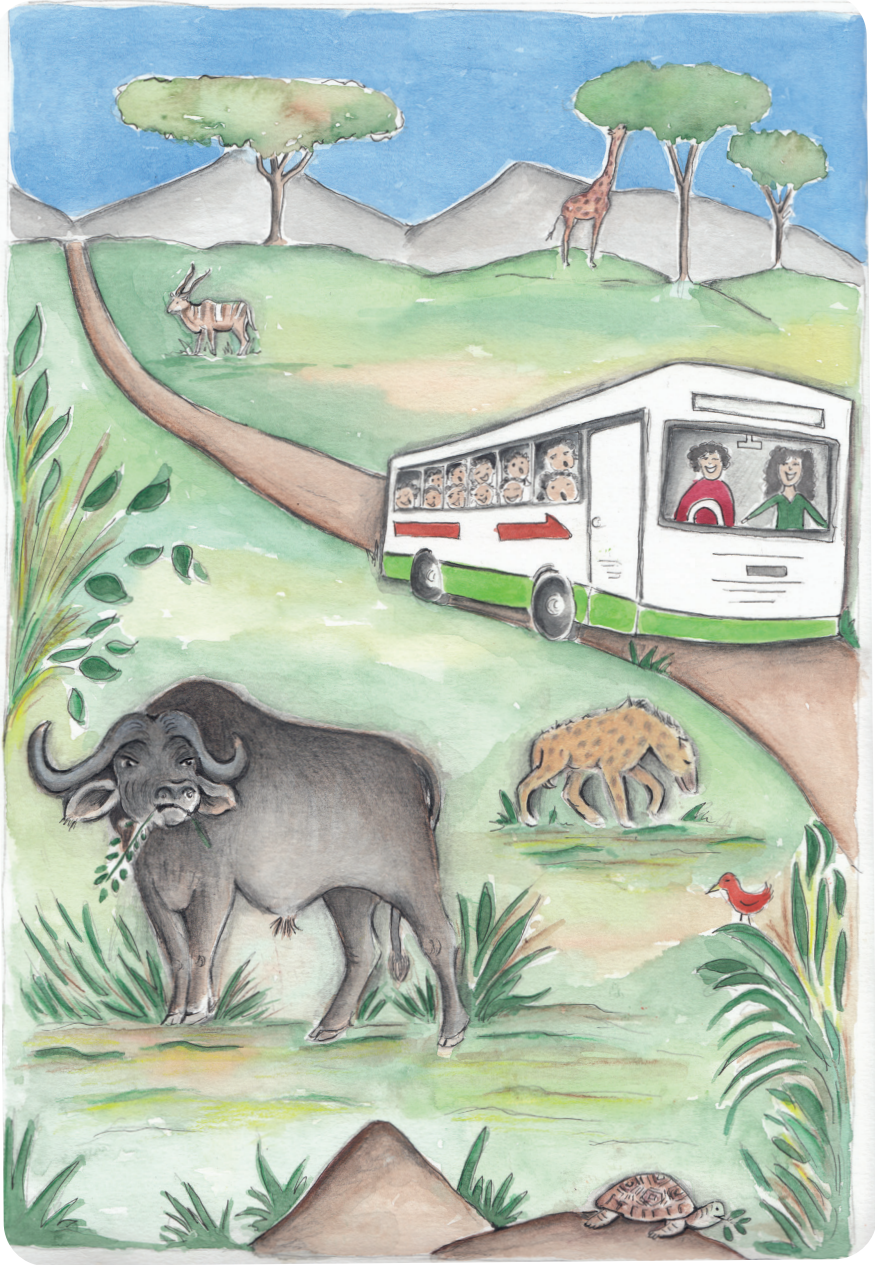
Hu si kale Wama a imisa hafhu basi.

A ri, “Ni khou vhona tshipuka tshi re na maṅanga, tshi re kha tshelede yashu ya R100?”

Eya! Khetshiḷa! Ri khou vhona ṅari mahatsini.

Ni ṯhogomele phele! Hu na ṅari ine yo dinaleaho nga thungo!







Ra bvela phan̄a na u tshimbila phakhani.

Wama a imisa basi. U dovha a pfha o takalesa!

A ri, “Ni khou vhona tshipuka tshi re kha tshelede yashu ya R50?”

Eya! Khetshīa! Ri khou vhona ndau fhasi ha muri. Ri na mashudu vhukuma!

*Ni thogomele, mbīdi! Ni thogomele, khongoni!
Heīa ndau i na māno na n̄ala zwa vhuhali!*







Ra bvela phanḁa na u tshimbila phakhani.

Zwino roṯhe ra vhona nḁou ya muvhala wa girei phanḁa hashu!

Wama a ri, “Heyi phukha i re na musingo i kha tshelede yashu ya R20!”

Ni ṯhogomele, phunguhwe! Hayo maṅo ndi malapfhu nahone a na vhuhali!







Ra bvela phanḁa phakhani.

Wama a imisa mureili wa basi. O takalesa!

A ri, “Ni khou vhona tshipuka tsho khetheaho tshi re kha tshelede yashu ya R10?”

Eya! Ri khou vhona tshugulu mbili dzine dza khou tshimbila mahatsini.

Wama a ri vhudza uri tshugulu dzi khomboni. Zwi vhavhaho ndi uri hu ḁodiwa maḁanga adzo. Ri na mashudu u dzi vhona!

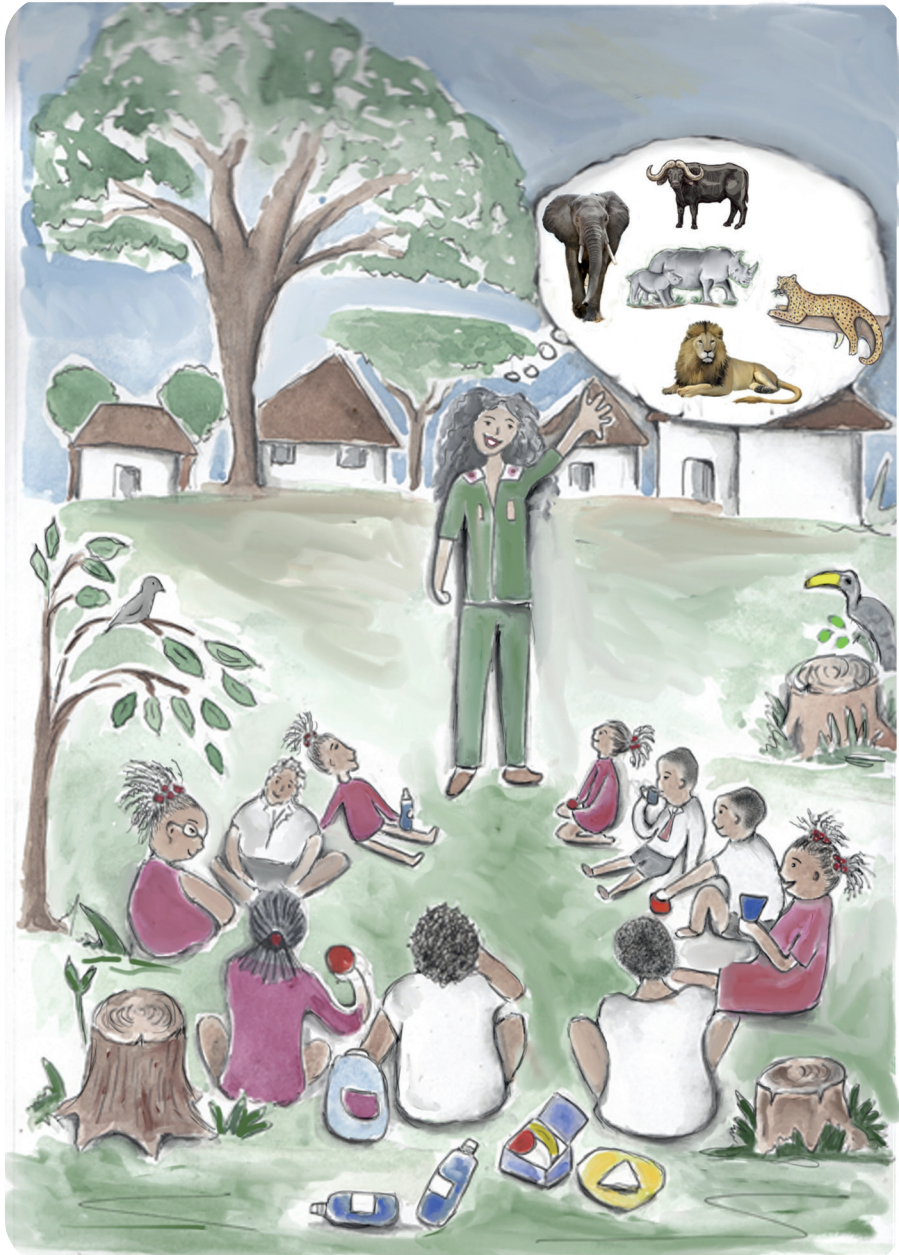






Wama a humbela mureili wa basi uri a ime fhethu ha pikiniki uri ri le zwiḽiwa zwashu zwa tshiswiḽulo.

Wama a ri, “Ro vhona khulwane ḽhanu! Kale idzi phukha dzo vha dzi tshi vhidziwa ‘khulwane ḽhanu’ ngauri dzo vha dzi phukha ḽhanu dza khombo dzine dza zwimiwa.”

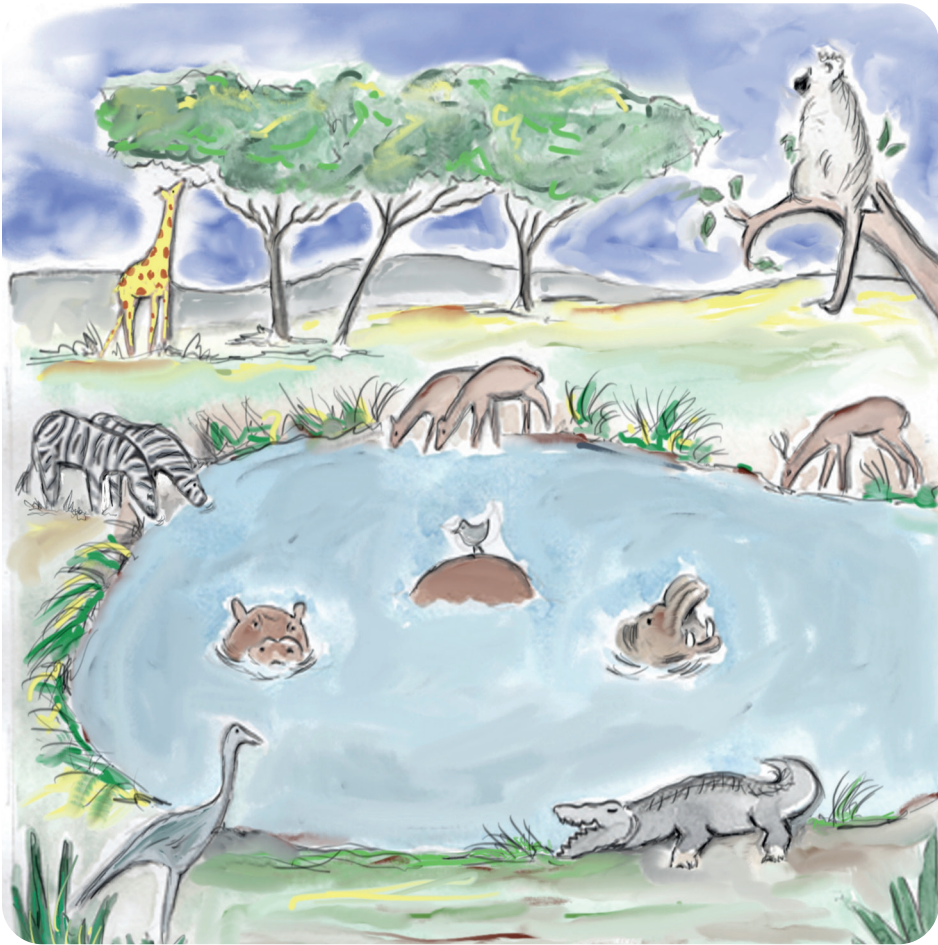




Musi ri tshi fhedza u la zwiliwa zwa tshiswiulo
ra vhuyelela basini la u ya hayani.

Ro lindela u vhona phukha dziwe musi ri tshi
humela murahu!





Vhugalaphukha ndi huñwe fhethu hu akhamadzaho!