



Ngwenya ya makwanga

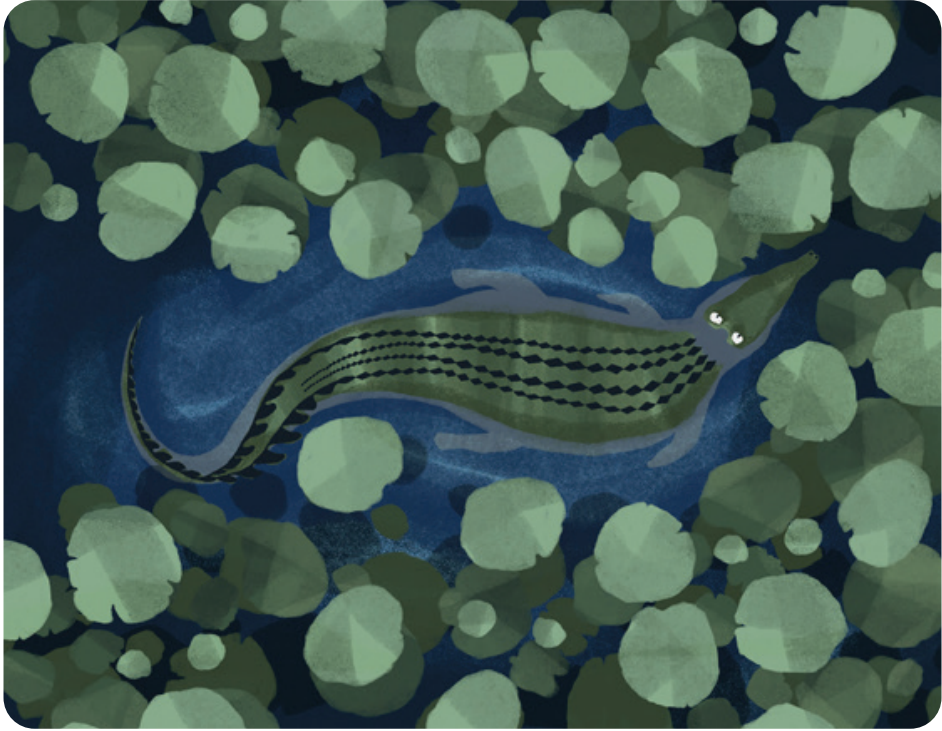


Charlotte Galane





Enambyeni wa Xikari a ku tshama ngwenya yi kulu. Vito ra yona a ku ri Gegetsu. Gegetsu a ri na xivundza. Nambu a wu tshama wu horile na ku miyela.





U hlongorile swihari hinkwaswo leswaku a ta
tiphina hi ku nwa a ri yexe enambyeni.

A rhandza ku pfuka swihari swin'wana.



Exikarhi ka siku a ta tshama etambeni.

A kukula rivala hi ncila wa yena.





Exikarhi ka vusiku swihari a swi nyandlamela swi ringeta ku nwa mati.

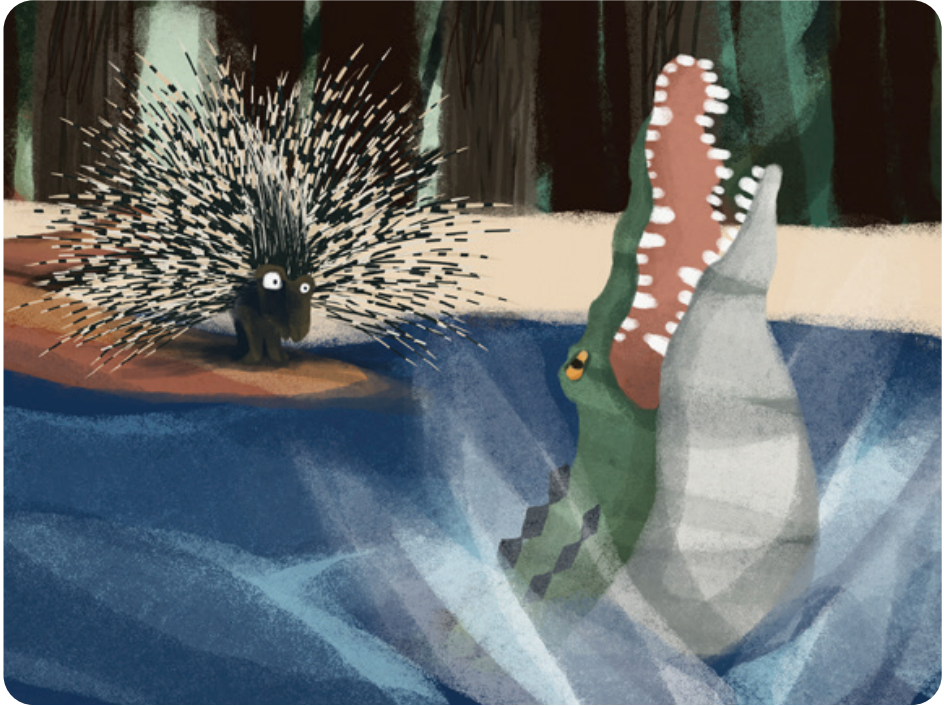
Gegetsu a va vona na ku ringeta ku va khoma.



Swihari swi rhumerile nungu ku ya
vulavurisana na Gegetsu.

A va lava ku va na kurhula na yena. U arile
ku yingisela.





Va pfumerile ku vulavula na yena. Nungu yi byerile Gegetsu leswaku mati ya fanele ku va ya avela na swihari hinkwaswo leswi nga kusuhi na nambu.

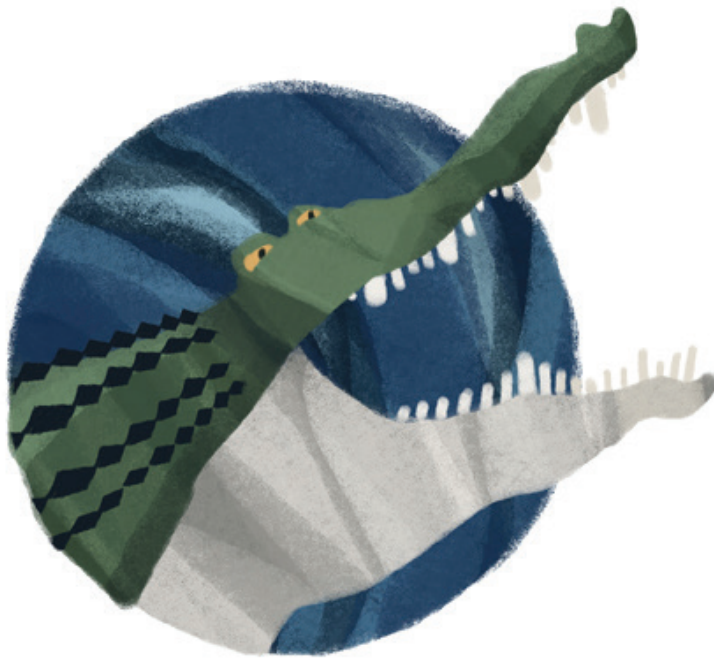
Gegetsu a ri na nkanu swinene.



Gegetsu na Nungu va hetelele hikuva va nga pfumelelanani.

Gegetsu u te, “A switiveke eka swihari hinkwaswo. Hi mina Hosi ya nambu wa Xikari. Ku nga vi na un’we loyi a taka a ta nwa mati eka nambu wa mina.”

Nungu yi tlhelerile eka swihari leswin’wana yi tsanile.





Nungu yi vuyile na xiviko. U va byerile
leswaku Gegetsu u yisa mahlweni na nkanu
wa yena.

Swihari swi vekile xirimbani xa ku phasa
Gegetsu



Mixo walowo, Gegetsu u phasiwile hi xirimbana.

Gegetsu u vonile kondlo enhoveni. U xiseterile kondlo ku va ri tsema nete. Gegetsu u ringetile ku baleka.





Swihari leswin'wana swi n'wi vonile.

Va khomile Gegetsu.

Va n'wi tlakurile va n'wi yisa eka Hosi
Ndlopfu.



Nungu yi vikile Gegetsu eka hosi.

Yi te, “Hosi Ndlopfu, hanya hi laha ku nga heriki. Gegetsu I khale a hi alela ku nwa mati ku suka ka nambu wa Xikari.”

Gegetsu a chuhile swinene.





Hosi yi te, “Gegetsu, u na makwanga.
Namuntlha I ro hetelela u alela swihari
swi’wana ku nwa mati ya nambu wa Xikari.
A hi nge ku pfumeleli u vavisa swihari eka
mfumo wa mina.”



Hosi a yi tsanile swinene.

Yi te, “Hinkwenu mi va mina. Switirhisiwa hinkwaswo leswi nga mfumo wa mina swi fanele ku avela swihari hinkwaswo.”

Gegetsu a ti sola hi leswi a nga swi endla.





U komberile ku khomeriwa eka swihari
hinkwaswo.

Swihari swi sungurile ku kanerisana hi mhaka
leyi.

Va pfumelelanile ku n'wi rivalela.



Ku suka kwalaho ku yisa emahlweni, swihari swi hanyile swi tsakile.

Va ti phinile hi ku nwa enambyeni wa Xikari va ntshuxekile.

