

# Mathaithai a Lwalwa

Tshivenda

Luta

3A



Mpho Motlhodiemang



### Mibvumo (tsedzuluso)

dz, fh, kh, vh, mb, nd, ng, zw, tsh, ny, sh, th, th

### Mubvumo muswa

lw (Lwalw a, Lwanga, Lwashu, Lwawe, Lwawa, Lwamondo, lw a lo, lw o, lwao, thudzelw a)

### Ipfhi ja u vhalwa nga ndowedzo (tsedzuluso)

mme

### Maipfhi a u vhalwa nga ndowedzo

mañwe

maswa

qipfa

khunzikhunzini

**Mathaitshai a Lwalwa**

**Tshivenqa**

**Lujā: 3A**

ISBN: 978-1-77981-574-3

© 2023 Ulwazi Lwethu African Languages Literacy Project

Muñwali: Mpho Motlhodiemang

Mutshanduli: Mpho Makwarela

Mufanyisi: Sinomonde Ngwane

Nyolo na kudzudzanyele: Rock Bottom Graphic & Design

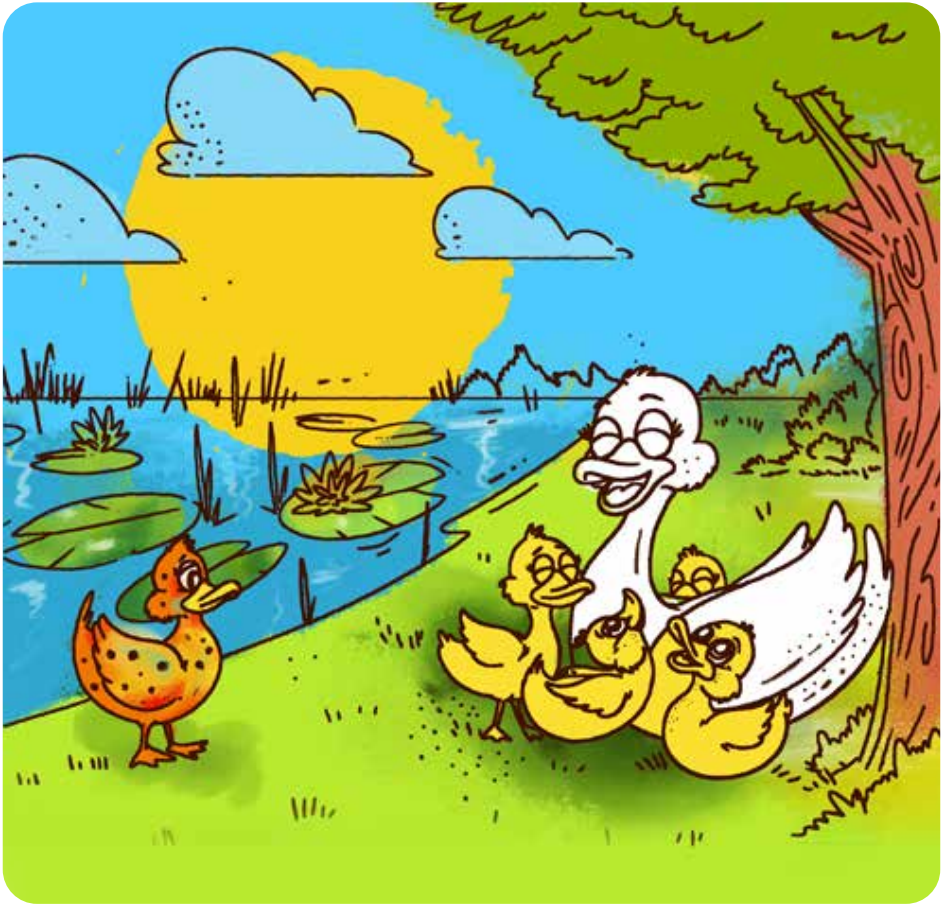
Nzonzanyo ya khandiso ya u thoma 2023.

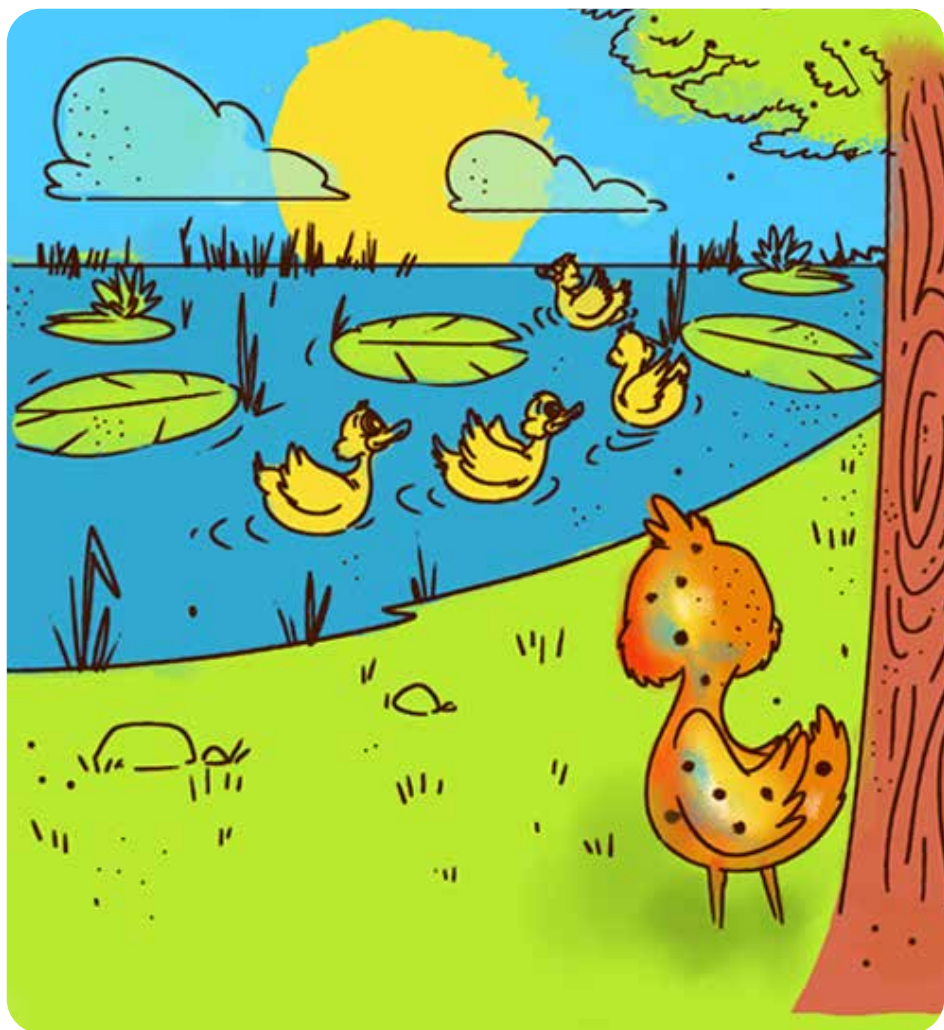
# Mathaithai a Lwalwa



**Mpho Motlhodiemang**

Munaka li dzula na vhana vhaḽo vhaḽanu damuni ngei Lwamondo. Vhana vhaḽo vhaḽanu vhane vha vha Lwanga, Lwashu, Lwawe, Lwawa na Lwalwa vho vha vho naka. Vho vha vha na mivhala yavhuḽi.



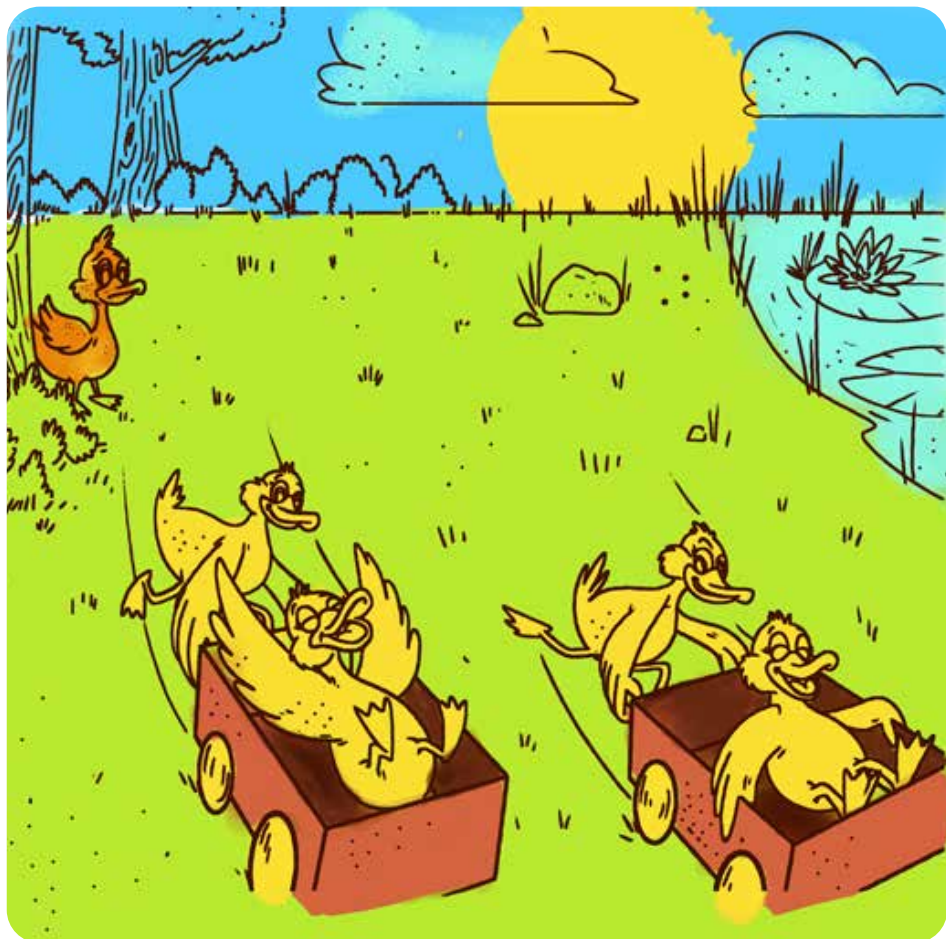


Naho zwo ralo, Lwalwa lo vha lo nakesa. Lo vha li na zwithoma zwe zwa vha zwi tshi li fhambanyisa kha mañwe.



Lunako lwaḽo lwo vha lu tshi vhangwa vivho  
kha maṅwe. ḽo vha ḽi tshi ḽipfha ḽo thudzelwa  
thungo.

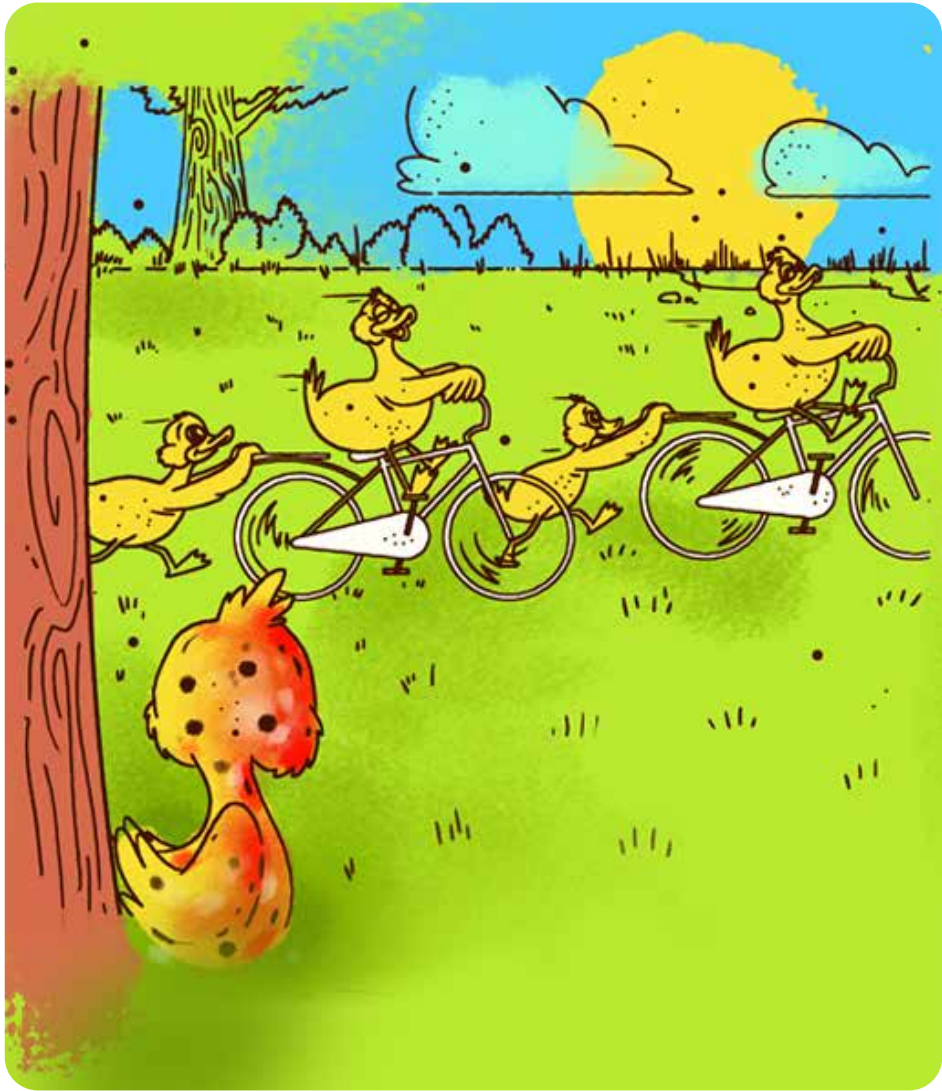




O vha a sa tambi naḽo.

O vha a sa ḽi kungulusi kha tshigariki. ḽo vha ḽi tshi ḽoḽa lufuno lwao.

O vha a sa tshovi nalo baisigira. Hothehothe lo vha li sa pangwi.







Lwalwa lo vha li tshi dzula lo tungufhala. Lo vha li tshi a talela a tshi khou tamba, miṭodzi yaḽo i maṽoni.

Lwalwa lo thoma u tshova baisigira li lothe. Lo vha li tshi khou ita mathaithai nga baisigira yalo, li tshi khou i tshova li songo farelela mananga a baisigira. Haya mathaithai o kunga manwe a da khalo.





Khaladzi a<sub>lo</sub> lo mbo di ima u tamba la talela musu li tshi khou ita manwe mathaithai. O vha a tshi khou li tama. Nga murahu a li hambela uri a a gudise.



A thoma u tamba na Lwalwa. Lwalwa ja thoma u vha sumbedza mathaithai maswa a u tshova baisigira.

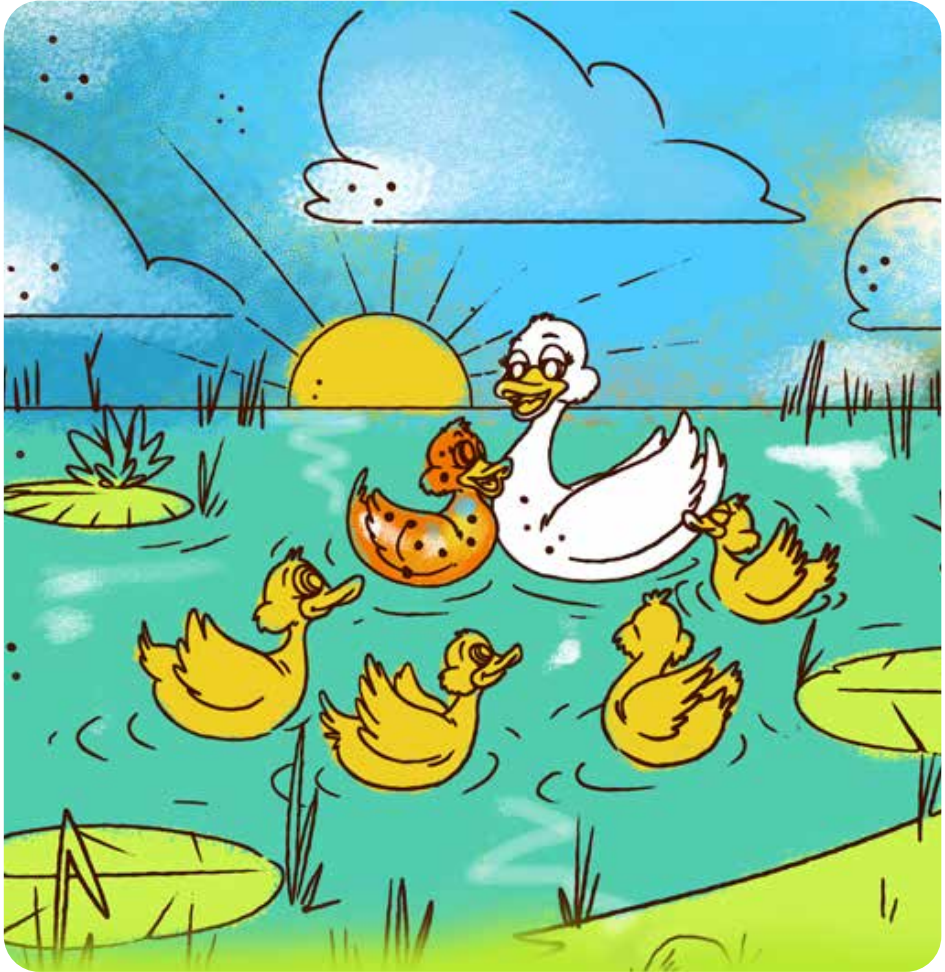






U thoma lenelo divha Lwalwa lo vha lo takala.  
Lo vha li tshi vho tshova baisigira na khaladzi  
dza lo.

Li sa athu kovhela, othe o sia zwigariki na dzibaisigira khunzikhunzini. O bambela othe a ya kha mme ao Munaka. Othe o vha o takalela mathaithai a Lwalwa.





## Readers

### Luḡa 1-2

- Donngi ya Khuliso
- Nunu na Bobi
- Ḳiḡowa!
- Muma, aḡama, pfhala!
- Zwivhuya u funa u kunakisa!
- Ngele na Ngudo vha a thusa
- A hu na maḡi
- Tshi a kona u fhufha?
- Mulilo!
- Mavhudzi mahulu
- Ṭali na buvhi
- Muoli Marubini!
- Thuso o mangala!
- Baba vha ḡo vhuya lini?
- Phumu o takalaho!
- Mvulatshikolela!
- Thendo na Thiambi
- Kha ri vhulunge maḡi
- Ṭhama o farakanea!
- Vha bulasini
- Ivhani na vhulenda, Thabelo
- Swobo ya u ḡifhelela
- Vhasidzana na mbudzi

### Luḡa 3

- Badzhi yo shandukisiwaho
- Dzikhonani kha mitsho yoḡhe!
- A thi funi miroho!
- Mulimi Vho Vele na dziḡhoho
- Tshilidzi o huvhala
- Maḡi! Maḡi!
- Lufuno lwa malwelavanda
- Zwienda zwiswa zwa Pfhano
- Mathaitḡai a Lwalwa
- Ripuluse o fara mbava!
- Muḡa u ḡhogomelaho
- Musengavhadzimu wa Farisani
- Mutevheḡḡaḡu wa vhutshilo ha tshiḡula
- Vhulwadze ha dzinguluvhe
- U thetshela zwiiḡiwa zwa Tshivenda
- Makumba o nyamalalaho a Vuvu
- Lutamo lwa Ḳwasundani lwo bveledzea
- Aḡivhaho na Aḡaho
- Moli na zwithuthubi
- Tshibeḡani tsha Kulani
- Maitele a Vhavana
- Mukapu wa u ḡifha
- Mushonga wa u fhodza
- Ḳotshi
- Vhuḡolo ha dzimbeu
- Muhumbulo wavhuḡi wa Tseisano
- Bola yo xelaho
- Wanga u ḡivha tshifhinga
- Ni ṡavhanyela mini, Wandeme?
- Ngweḡa i sa londi
- Mutambi makone
- Zwifhiwa

### Luḡa 4-5

- Rinngi ya musuku
- Lwendo lwa u ya vhugalaphukha
- Muvhuya u londola mutakalo zwavhuḡi!
- Mulimisi o fariwa nga mala
- Soweto
- Ṭshaka dza zwiendedzi
- Mathoma maswa
- Ndifhedzo ya bulu
- Musidzana wa vhuḡali
- Zwo hulesa kha nḡe!
- Vhatukana vha vhaḡali
- Vhulwadze ha mukhushwane
- Murei wa khovhe
- Thaidzo ngadeni ya makhulu
- Vhusiku vhu si na khofhe
- Ṭhangaḡhanganyo tshi sa ofhiho!
- Tshienda tshavhuḡi
- Muḡoro wa Sedzani



Ulwazi Lwethu yo lambedziwa nga Zenex Foundation nahone ndi thandela yo thomiwaho u itela u bveledza tshivhalo tsha bugu dza murole wa fhasi na vhavhali vha vhalelaho u dhiphina vha nyambo dza Afrika na matheriala wa u tikedza vhadededzi. Iyi thandela yo livhiswa kha u funza na u tikedza vhagudiswa vha re kha Mutheo wa Fhasi u itela u khwinifhadza kuvhalele na kupfhesesele kwa luambo lwavho lwa hayani. Bugu dzo bveledzwa nga nyambo dza tshane dza Afrika nga u shumisana ha Molteno Institute for Language and Literacies, Nelson Mandela Institute for Education and Rural Development, Room to Read South Africa, na Saide. Zwishumiswa zwothe zwo bveledzwa sa “Zwishumiswa zwa Pfunzo zwo Vulelwaho” kana “Open Education Resources” (OER).

Please scan the QR code or visit our website to download the full copy of this reader: [www.yourwebsite.com](http://www.yourwebsite.com)



Creative Commons Attribution-NonCommercial-NoDerivatives (CC BY-NC-ND) 4.0 International Licence

Disclaimer: You are free to download and share this work as long as you attribute Ulwazi Lwethu, but you may not change this work in any way or use it commercially.

