



# Izinyosi

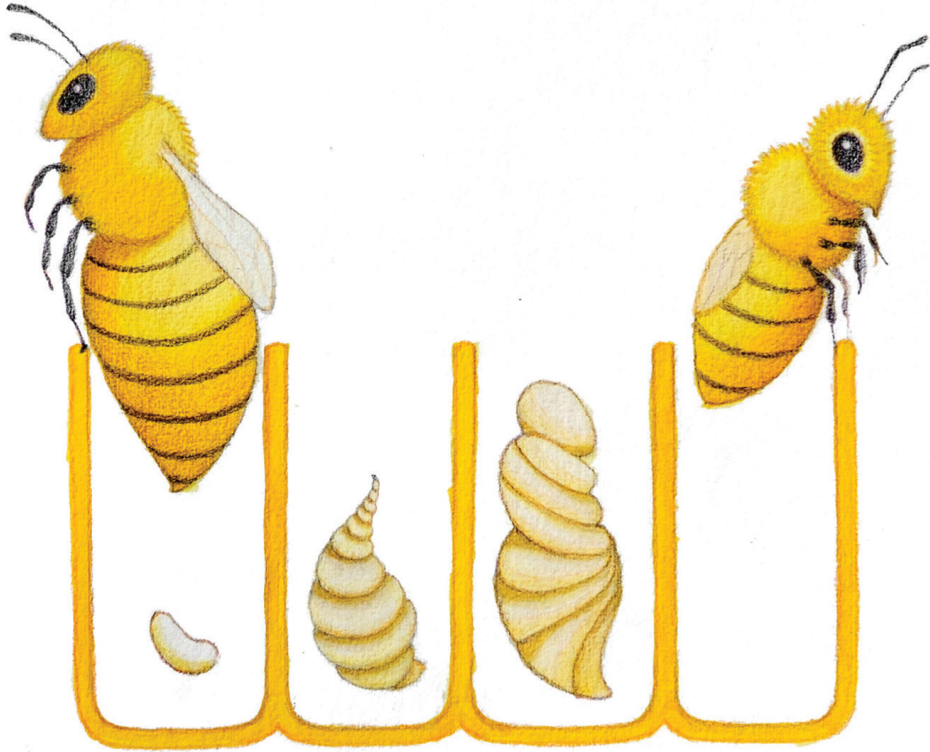


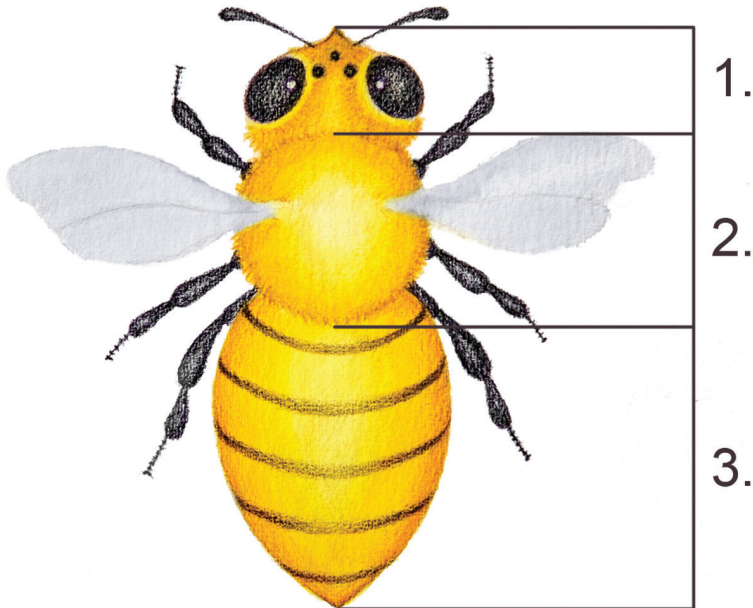
**Nangamso Ka NomaHlubi-Koza**





Izinyosi ziqala impilo njengamaqanda.  
Amaqanda ayachamusela, abe  
yisiphungumangathi agcine abe yizinyosi.





Izinyosi ziyizinambuzane ezikhuthele.

Zinombala ophuzi nemigqa ensundu.

Imizimba yezinyosi ihlukaniseke kathathu:  
kunenhloko, isifuba nesisu.

Zinamehlo ayisihlanu. Amabili awo makhulu.

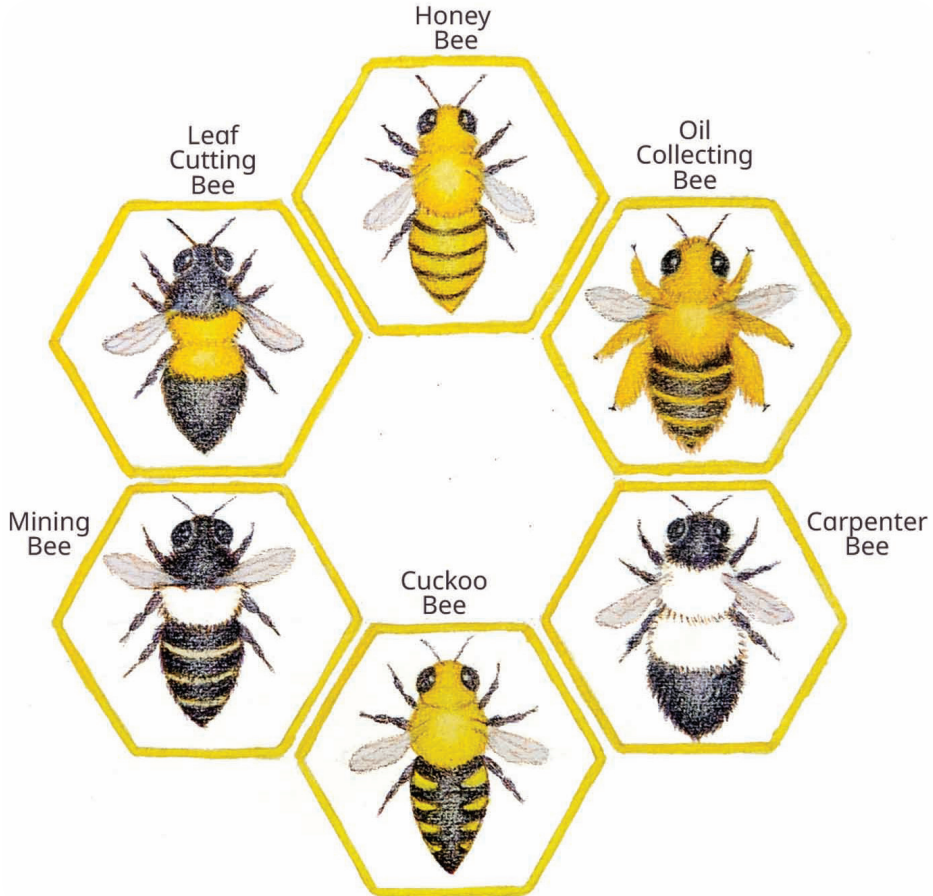
Futhi zinemilenze eyisithupha. Lemilenze  
inemisebenzi eminingi efaka nokuhlaza  
izimpondo zokuzwa, ukubamba izinto,  
nokuthatha uju.



Kunezinhlobo eziningi zezinyosi.

Ezidume kakhulu izinyosi zoju.

Zihlala ngezizwe ezifana nenkosi yezinyosi.





Izinyosi zithanda indawo eseduze nezitshalo nezimbali. Lezindawo zifaka phakathi izingadi, amadlelo namahlathi. Lapho kunezimbali eziningi khona, izinyosi zihlala lapho.



Inkosi yazo izalela amaqanda amaningi,  
bese kukhula isibalo sezinyosi.

Izinyosi zikhuthele kakhulu ekwenzeni  
uju. Izinyosi ezisebenzayo zihlanza indlu  
yezinyosi, zibuthe impova noju. Zenzela  
ukuthi isizwe sithole ukudla.





Izinyosi zoju zikhuluma ngokusina. Uma zibona izimbali ezinhle, zimema ezinye izinyosi ngokusina. Lokhu kungoba izimbali zingumthombo woju lwazo.



Izinyosi zidlala iqhaza elibalulekile ekongeni imvelo ngokusiza izitshalo ukuthi zikhule. Njengoba izinyosi zidla uju, zithatha impova ziyise ekhaya. Izinyosi zithwala impova ngemilenze nemizimba kusukela kwenye imbali kuye kwenye.

Enye impova iyawa endleleni eya ekhaya. Lokhu kubangela ukuthi izimbali ziqhakaze ezindaweni eziningi.









Uma zifika ekhaya, zisebenzisa impova noju, zithwale ngesisu ukuze zenze uju.

Izinyosi zoju kuphela kwezinambuzane ezikhiqizela abantu ukudla ukuze badle. Uju lunoshukela, futhi lumnandi. Ngesinye isikhathi lusebenza endaweni kashukela. Lusetshenziselwa nokwelapha izilonda ngokulugcobisa ezilondeni.



Uma sibona izinyosi zindiza, asikhumbule  
ukuthi zisebenza ukusenzela uju, nokwandisa  
izimbali.

