



Tinyosi

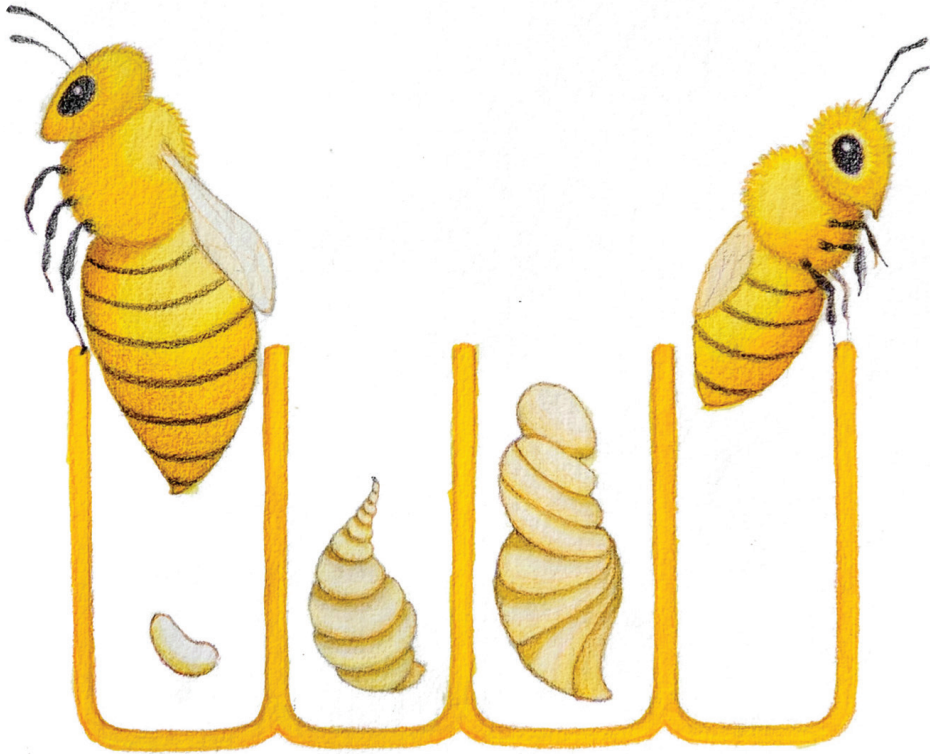


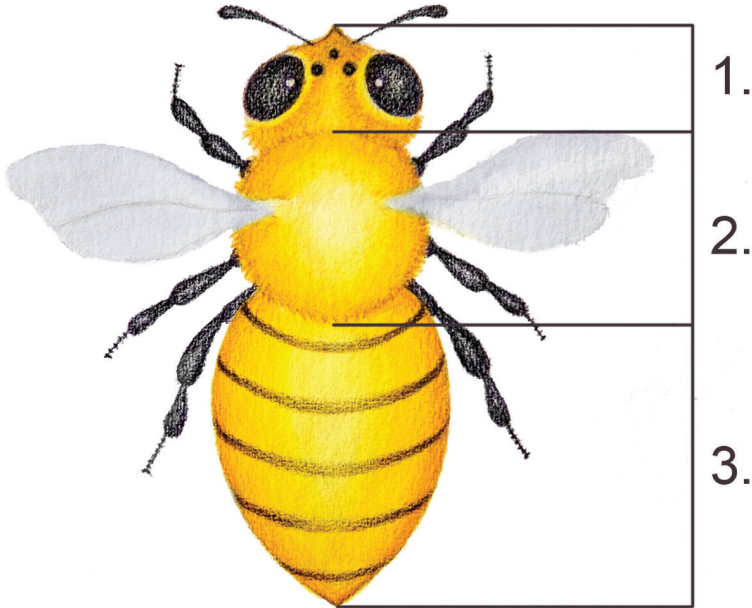
Nangamso Ka NomaHlubi-Koza





Tinyosi ticala imphilo njengamacandza.
Emacandza ayachobosela, abe
siphungumangathi agcine abe tinyosi.





Tinyosi tilokatane letikhutsele.

Tinembala loluphuti nemishi lensundvu.

Imitimba yetinyosi ihlukaniseke katsatfu:
kunenhloko, sifuba nesisu.

Tinemehlo lasihlanu. Lamabili awo makhulu.

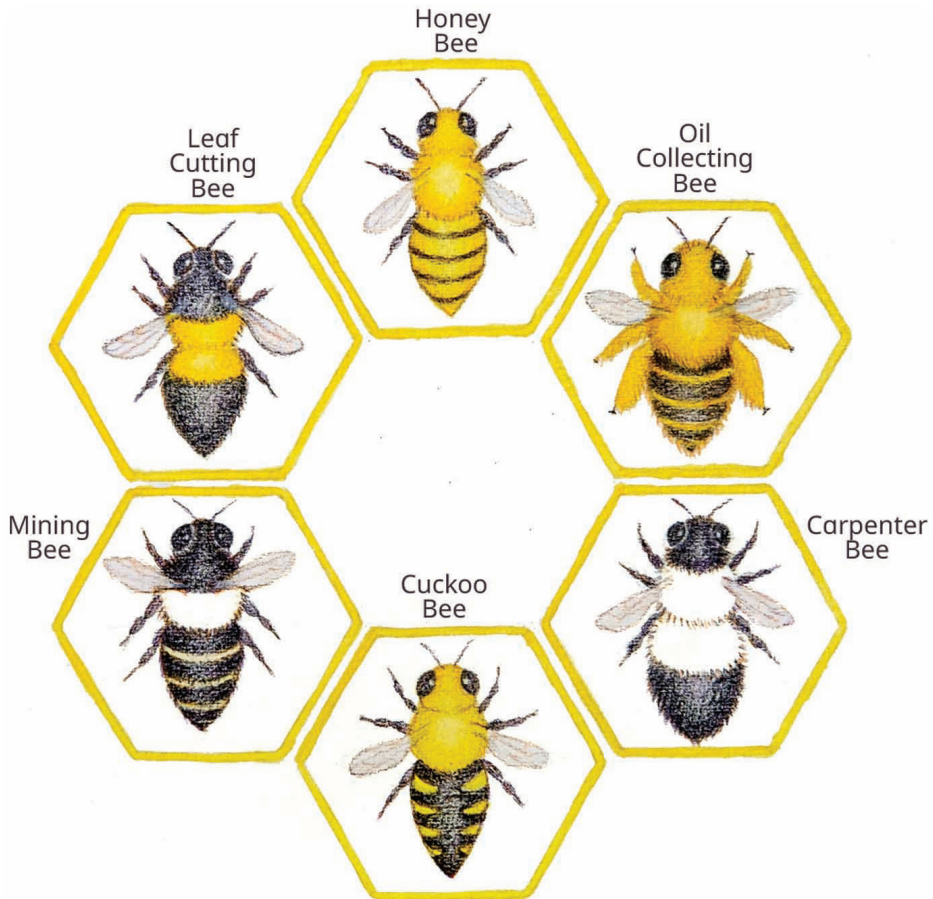
Futsi tinemilente lesitfupha. Lemilente
inemisebenti leminyenti lefaka nekuhlobisa
timphondvo tekuya, kubamba tintfo,
nekutsatsa luju.



Kunetinhlobo letinyenti tetinyosi.

Letidvume kakhulu, tinyosi teluju.

Tihlala ngetive letifaka inkhosi yetinyosi.





Tinyosi titsandza indzawo lesedvute netitjalo netimbali. Letindzawo tifaka ekhatsi tingadze, emadlelo nemahlatsi. Lapho kunetimbali letinyenti khona, tinyosi tihlala lapho.



Inkhosi yato italela emacandza lamanyenti,
bese kwengeteka sibalo setinyosi.

Tinyosi tikhutsele kakhulu ekwenteni luju.
Tinyosi letisebentako tihlobisa indlu yetinyosi,
tibusse imphova neluju. Tentela kutsi sive
sitfole kudla.





Tinyosi teluju tikhuluma ngekugidza. Uma
tibona timbali letihle, timema letinye tinyosi
ngekugidza. Kungobe timbali tingumtfombo
weluju lwato.



Tinyosi tidlala lichaza lelihle ekongeni imvelo ngekusita titjalo kutsi tikhule. Njengobe tinyosi tidla luju, titsatsa imphova tiyimikise ekhaya. Tinyosi titfwala imphova ngemilente nemitimba kusukela kuyinye imbali kuye kulenye.

Lenye imphova iyawa endleleni leya ekhaya. Loku kubangela kutsi timbali tichakate etindzaweni letinyenti.







Uma tifika ekhaya, tisebentisa imphova neluju, letikutfwala ngesisu seluju kute tente lujju.

Tinyosi teluju kuphela kwetilokatane letikhicitela bantfu kudla kutsi badle. Lujju luyanongotela, futsi lumnandzi. Ngalesinye sikhatsi lusebenta endzaweni yashukela. Lusetjentiselwa nekwelapha tilondza ngekulugcobisa etilondzeni.



Uma sibona tinyosi tiphapha, asikhumbule
kutsi tisebenta kusentela luju, nekuhlanyela
timbali.

