



Umjikelo wobomi besele



NguEvah Tukisi



Isele lihlala emanzini nasehlabeni. Isele libeka amaqanda kwindawo efihlakeleyo.





Isele libeka amaqanda ngexesha lemvula.
Liwabeka kwindawo enezityalo namanzi
angekho nzulu



Isele libeka amaqanda amaninzi ngexesha liwashiye.

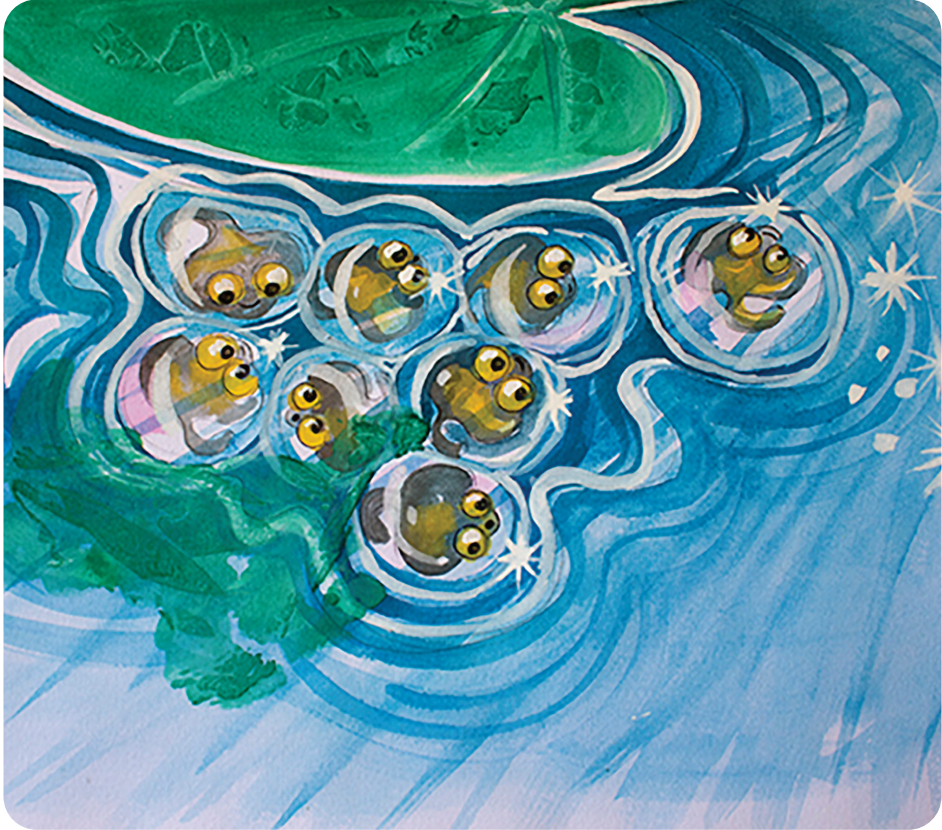




Isele libeka amaqanda emanzini acwengileyo. Amaqanda anamathela kwizityalo, amatye nenkunkuma esemanzini.



Ilanga lifudumeza amaqanda esele aze
aqale ukuqandusela.





Kusuku lwesithathu amaqanda esele
ayaqandusela.



Emva kweeyure ezingamashumi amabini anesine, amaqanda aba ngoonjubalala.

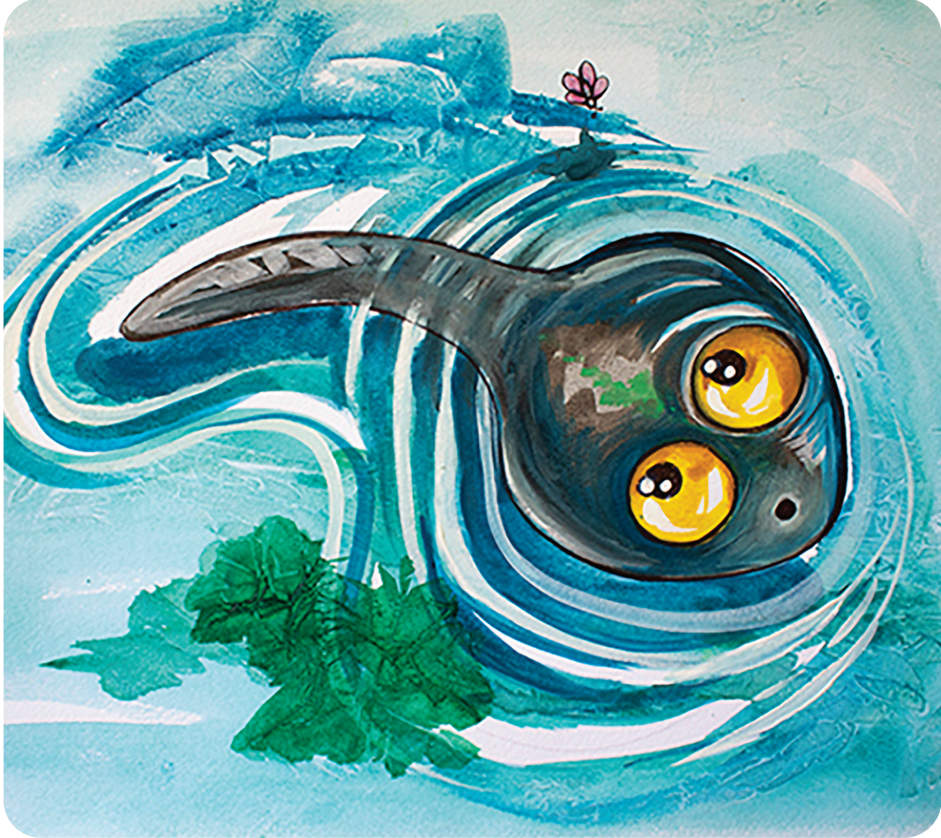




Unojubalala ukhula ehlala emanzini kuphela.
Usebenzisa izikrotyana ezisemacaleni
omzimba ukuze aphefumle.



Bayakhula oonojubalala baze kwiveki
yesithathu babe ngamasele amancinci.
Basebenzisa imisila ukudada.





Xa imiphunga yesele isakhula, lihlala emanzini kuphela.



Isele elincici liqhubeka nokukhula. Kwiveki yesibhozo kuqala ukucela imilenzana emibini.





Kwiveki yeshumi elinesibini, umsila uya usiba mfutshane. Isele liba nemilenze emine.



Xa umsila wonoojubalala unyamalele
bakulungele ukuhlala emanzini
nasemhlabeni.

Isele ngoku lisebenzisa imiphunga
ukuphefumla.





Isele liqhubeka nokukhula. Kwiveki yeshumi elinesithandathu isele likhule ngogqibeleleyo.



Isele litya iimpukane nezinambuzane.
Lizibambisela ngolwini lwayo olude. Ulwimi
lwesele luncangathi.





Isele litya iimpukane nezinambuzane.
Lizibambisela ngolwini lwayo olude. Ulwimi
lwelese luncangathi.



Krok, krok, krok

Isele liyacula. Isele lihleli kwinyibiba entle.





Amasele ziincutshe zokuzifihla.



Khangela isele kulo mfanekiso!

