



Lulu o kae?

Buka eno ke ya ga









Ngwana mongwe le mongwe o tshwanetse a nne le dibuka di le lekgolo fa a le dingwaga di le tlhano. Ka jalo, Book Dash e kgobokanya bailhami ba seporofeshenale bao ba ithaopang go tlhama dibuka tse dintshwa tsa Seaforika tseo mongwe le mongwe a ka kgonang go di ranola le go di phasalatsa bonolo. Go bona tshedimosetso go feta, le go goga dibuka tse di ntle tse di atometseng go gatisiwa, etela bookdash.org.

Lulu o kae?

Ditshwantsho di dirilwe ke Clyde Beech

E kwadilwe ke Mohale Mashigo

E tshwantshitswe ke Nkosingiphile Mazibuko

E tselegantswe ke Lisa Treffry-Goatley

Ka thuso ya batsaakarolo ba Book Dash kwa Motse Kapa ka 14 Moranang 2018.

E ranotswe ke Keagana Moloabi mo boemong jwa New Africa Books.

ISBN: 978-1-928497-21-9

This work is licensed under a Creative Commons Attribution 4.0 Licence (<http://creativecommons.org/licenses/by/4.0/>). You are free to share (copy and redistribute the material in any medium or format) and adapt (remix, transform, and build upon the material) this work for any purpose, even commercially. The licensor cannot revoke these freedoms as long as you follow the following license terms:

Attribution: You must give appropriate credit, provide a link to the license, and indicate if changes were made. You may do so in any reasonable manner, but not in any way that suggests the licensor endorses you or your use.

No additional restrictions: You may not apply legal terms or technological measures that legally restrict others from doing anything the license permits.

Notices: You do not have to comply with the license for elements of the material in the public domain or where your use is permitted by an applicable exception or limitation.

No warranties are given. The license may not give you all of the permissions necessary for your intended use. For example, other rights such as publicity, privacy, or moral rights may limit how you use the material.





Lulu o kae?



Clyde Beech Mohale Mashigo Nkosingiphile Mazibuko
Kgatiso ya Setswana ka Keagana Moloabi





“Nyaya!”







“Lulu! Ke nako ya go tsamaya,”
go goa Mma.







Lulu o kae?
A o ka fa tlase ga sofa?
A o ka fa morago ga garetene?





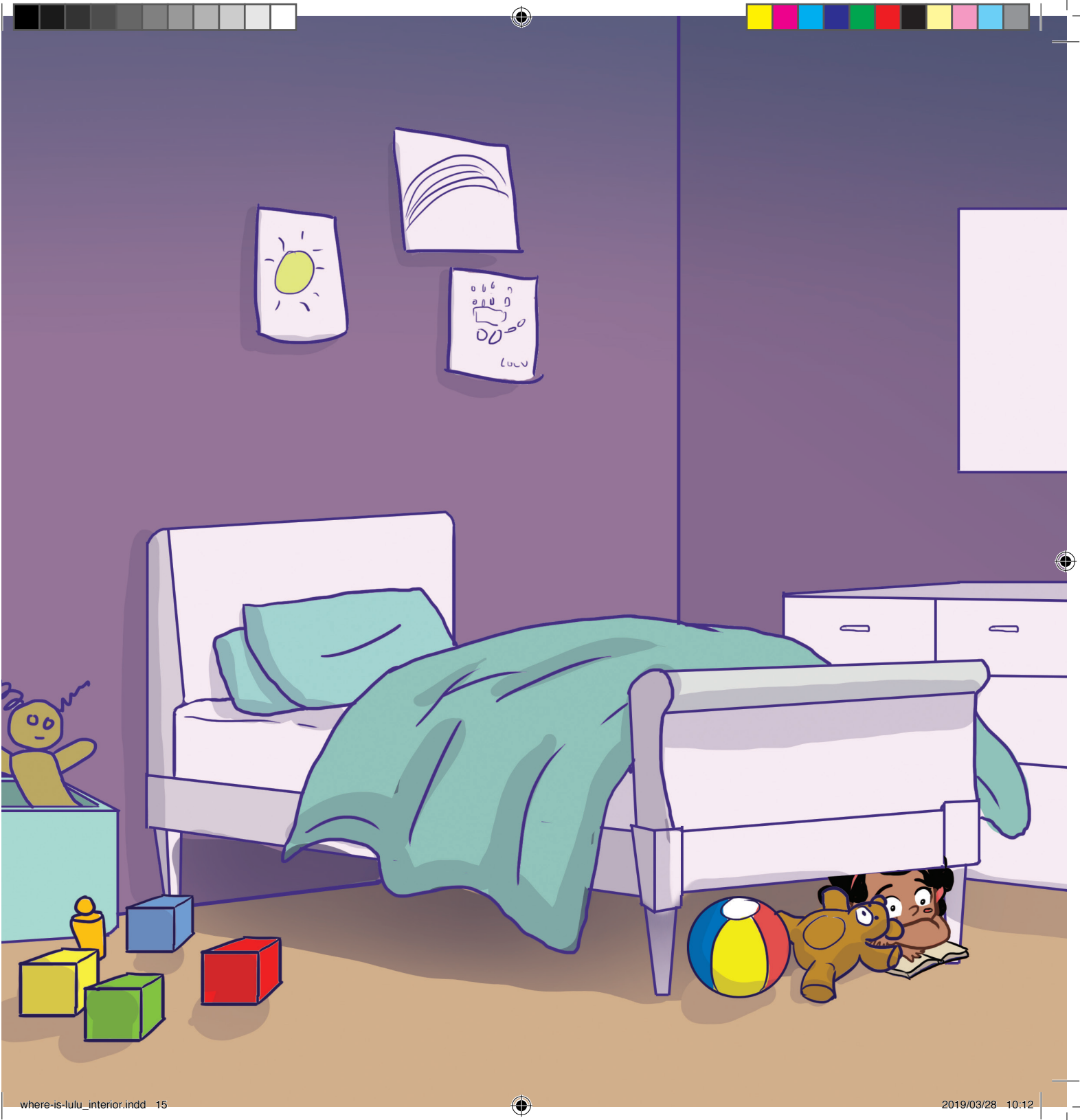


Lulu o kae?
A o mo pele ga setofo?
A o ka fa khatebotong?





“Lulu! Ke nako ya go tsamaya.
O kae?” go goa Mma.





“Ke wena o!”

“Ga ke batle go tsamayaaa!”





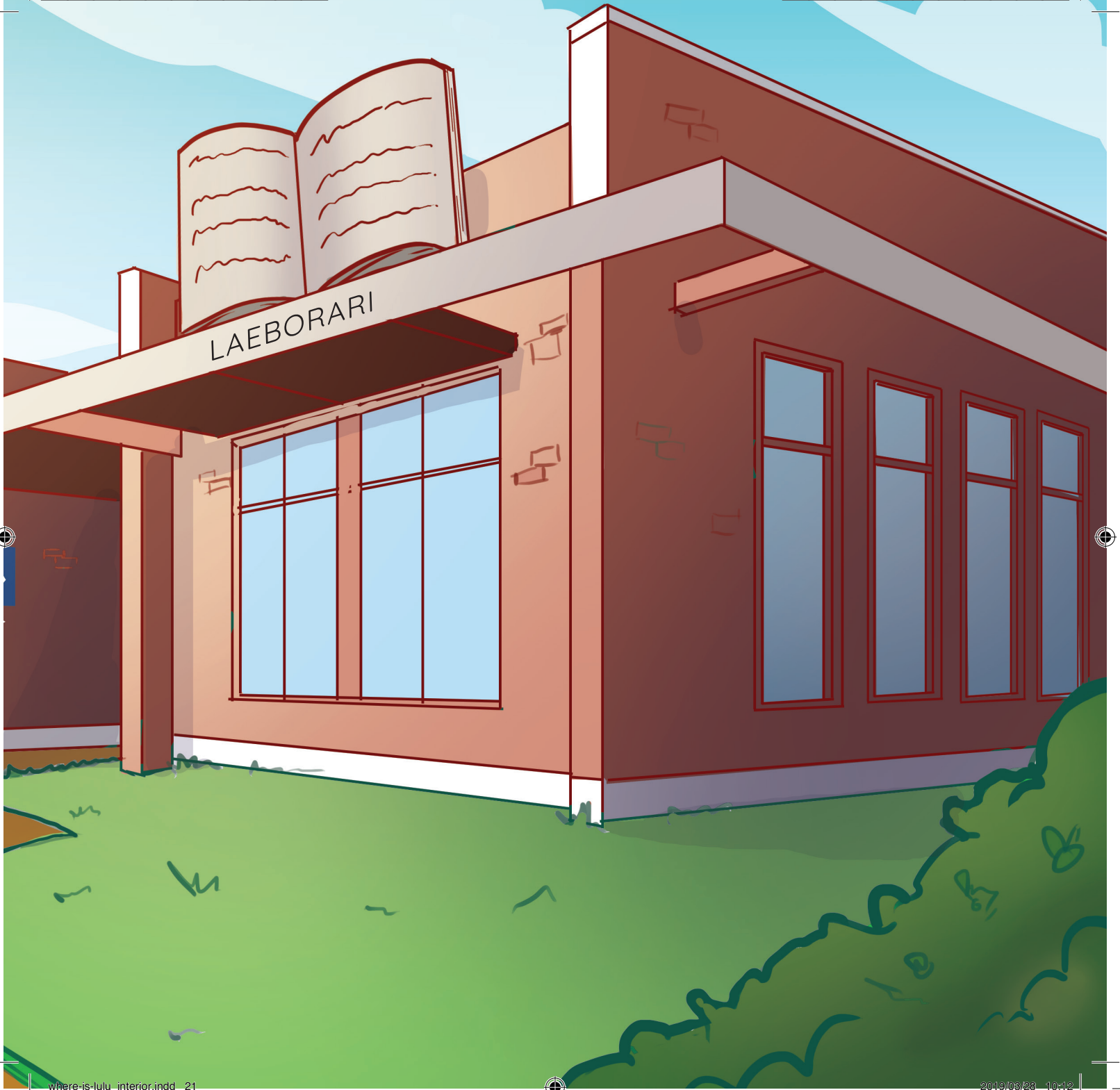
“Re tshwanetse re tsamaye,”
garialo Mma.

“Fela ke rata eno!”











“Ke rata eno!”





“Le eno.”



“Le eno.”

“Le eno.”





“Wa bona? O busa dibuka mme o
adima go le gontsi.”

“Heee!”







Lulu o kae jaanong?







