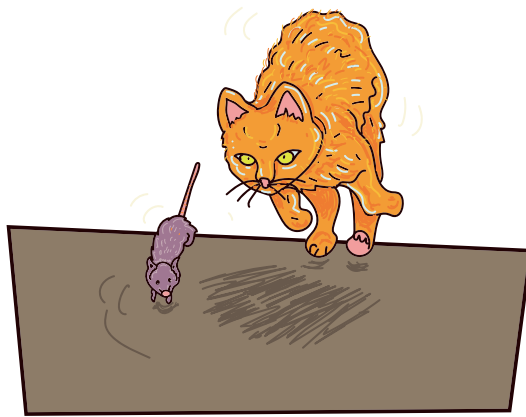


# Nədíŋ mnhòm

Ghomá'álá'



*Auteur : Blaise Mkounga Tala*

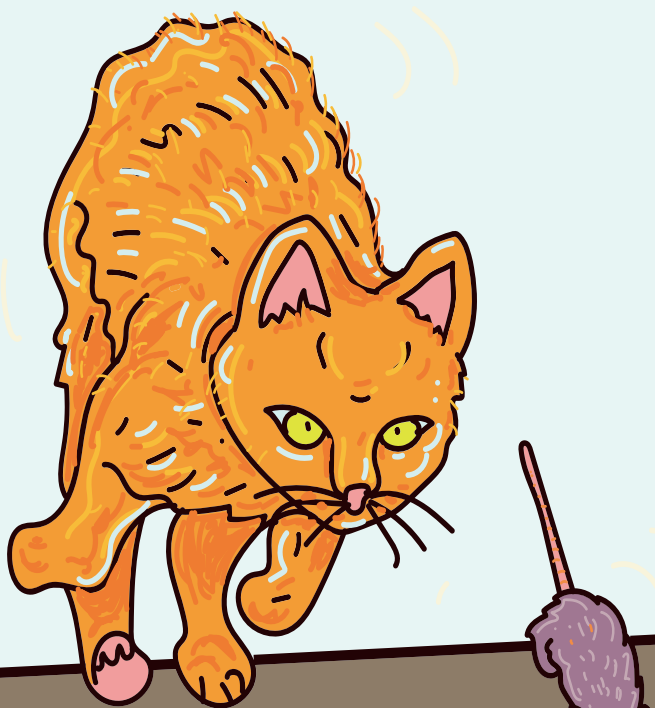
*Illustrations : Maureen Etondi*

*Design : Victoire Samè*

Внѣ бѣ нѣм нѣбыѣр тсѣ’.



Púsî gəm cwákwè.



Gõp wé dí bêm myé.



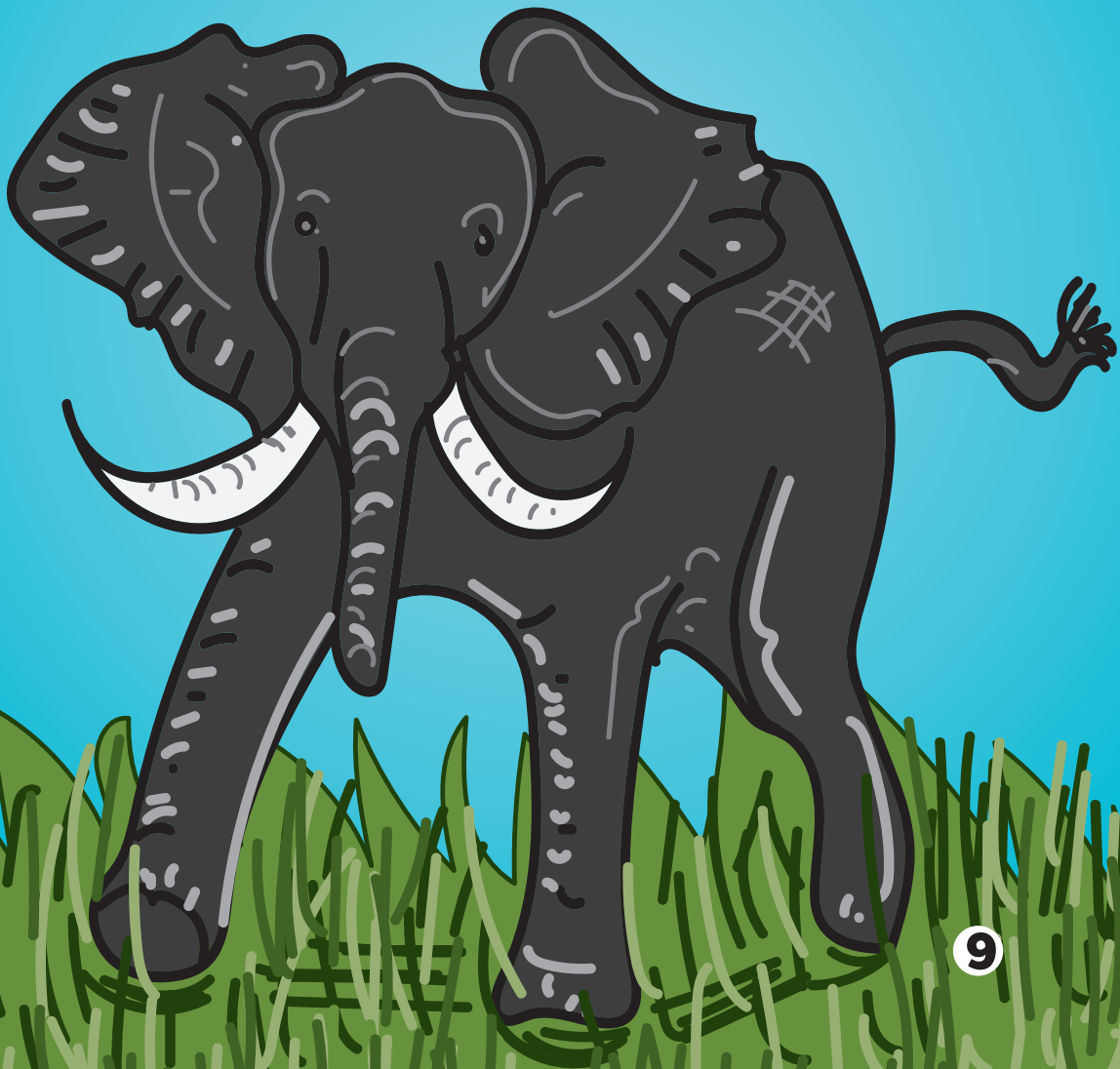
Nɔmlên ɲkɰdú mɲt'ú.



Fomnôm bæ é tæo te'.



Նոսո ցա մսո  
մեքե մցիքեթե.



Gõ ghẹm mêtởm bapgu.

