

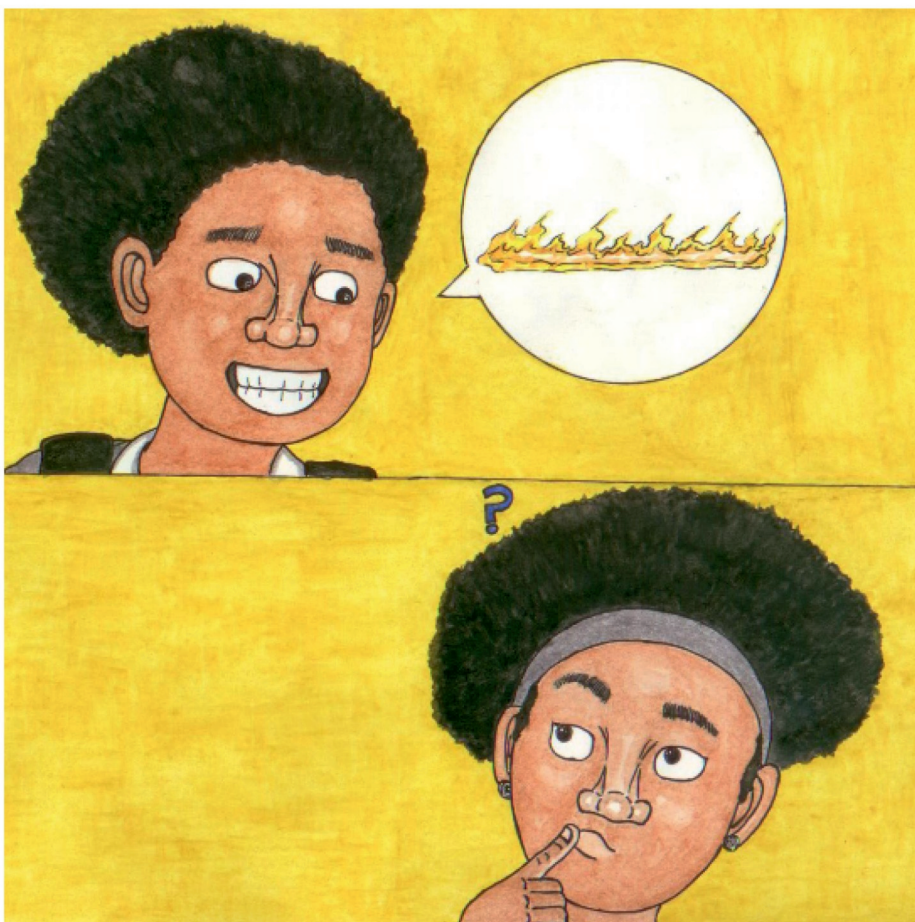
“Naka, phakiša, re ilo šalela sekolong!” Nala a goeletša.

“Ke kwa botšididi! A re eme re gotše mollo gore re ruthele,”
Naka a realo.



“Na o lebetše gore rakgadi o rile re se ke ra raloka ka mollo?” Nala a botšiša.

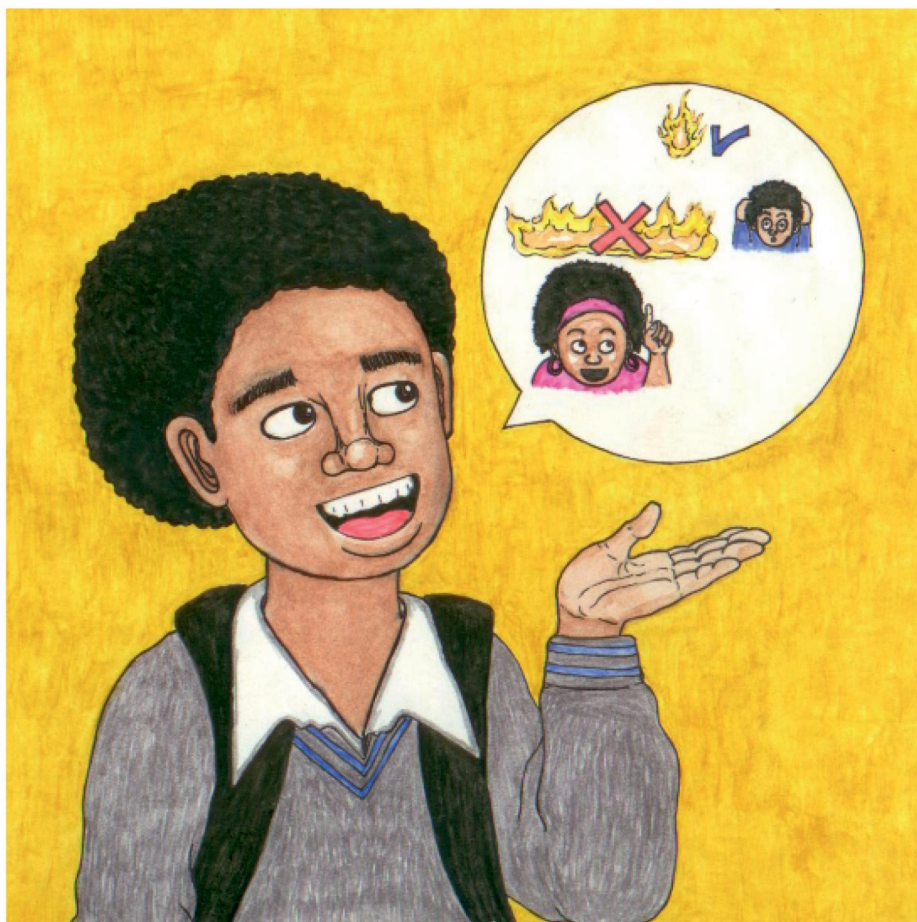
“Ke a gopola, efela mo ga se ka ntlong!” Naka a araba.



Nala a re, "Re mo mmileng efela le gona go ka ba kotsi. Mollo o ka phatlalala ka lebelo gomme wa hlola tshenyo ye kgolo."



“Kgale mollo e be e le mothopo o nnoši wa phišo le setša. O be o šomišwa go apea, go ruthufatša le go bonegela,” Naka a realo.

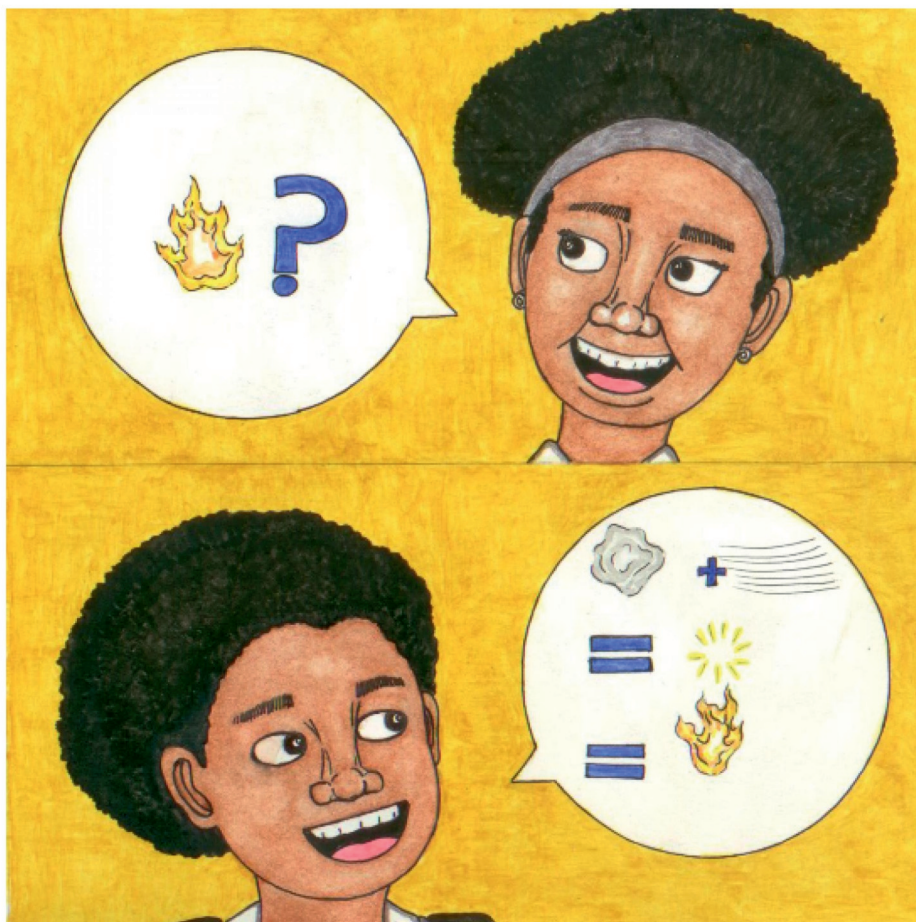


Nala a fetola, "Mollo ke sedirišwa se bohlokwa efela ga o laolege. Ke ka lebaka leo rakgadi a rego bana ba se ke ba gotetša mollo."



“Mohlagase o bolokegile ebile o hlwekile go feta dibešwa tša go swana le dikgong goba malahla.”

“Go šomiša dibešwa tše go hlola tšhilafatšo ye ntši ya moya.” Nala a tlaleletša.

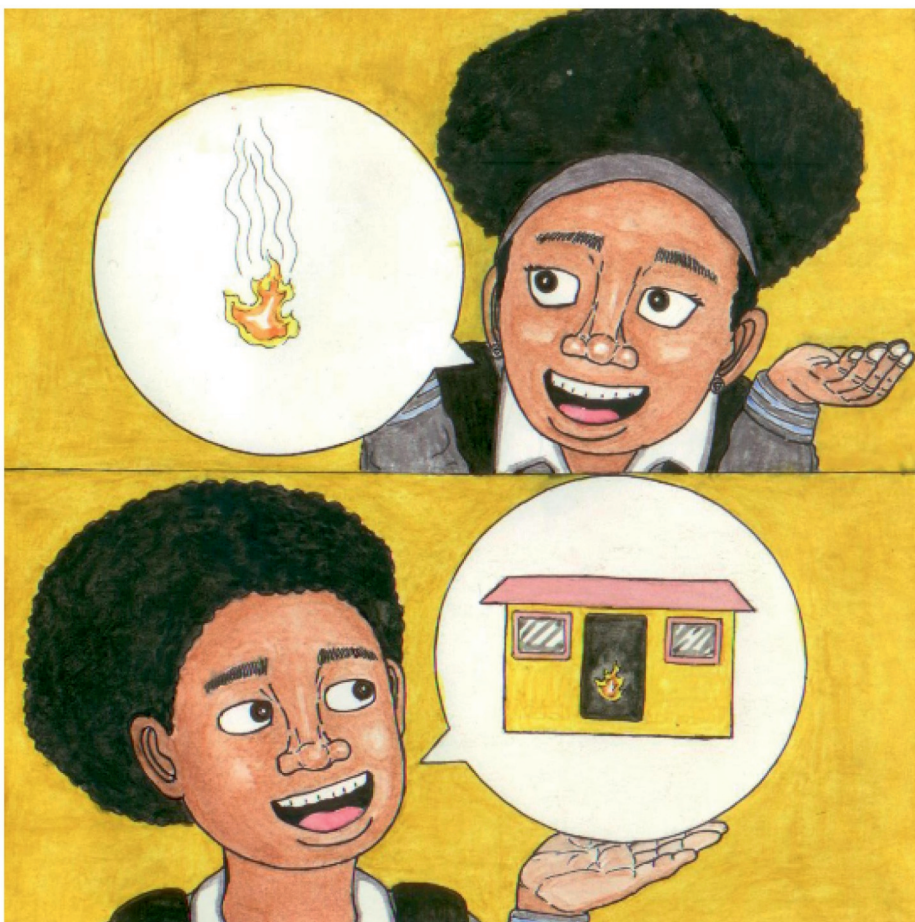


Naka a botšiša, “Na o a tseba gore mollo o thoma bjang?”

“Ka nako ye nngwe ge sebešwa se hlakana le moya, di hlola mollo. Ke ka mokgwa woo mollo o thomago ka gona,” Nala a hlaloša.



“Ge moya le sebešwa di hlakana ka lebelo ka phišo ya maleba, kgabo e thoma go tuka. Mohlala, kgohlagano ya dikota goba go kgwarinya mankgwari.”



“Mollo o ntšha muši,” gwa realo.

“Ee, ke ka lebaka leo re sa swanelago go gotetša mollo ka ntlong. Ga se gwa bolokega go hema muši,” Nala a dumela.



Nala le Naka ba fihlile sekolong.

“Gopola, o se ke wa tlogela kerese goba mollo o tuka ntle le tlhokomelo. Mollo o ka fiša dintlo le batho!” Nala a mo lemoša.



—Dipotšišo

1. Ke mang yoo a nyakago go gotetša mollo?
Ka lebaka la eng?
2. Efa mehola ye me³ ya mollo.
3. Efa mathata a ma³ ka mollo.
4. Hlaloša tšhilafalo ya go hlolwa ke mollo?
5. Efa ditsela tše 2 tša polokego ya mollo.
6. Nyakišiša lentšu le 'mollo' ka maleme a mangwe a ma³. Thala seswantšho sa mollo kgauswi le lentšu le lengwe le le lengwe.