



Kadzeni, bekunenzawo lencane esifundzeni saseLimpopo labeyibitwa ngekutsiwa yiGa-Molapo, ngaphansi kwenkhosi Sello Kekana.

Bekuyinzawo lencane kakhulu kangangekutsi bonkhe bantfu bebatana kulenzawo. Tindlu tabo betakhiwe ngetjani nangeludzaka.



Babe naMake Malatji bebahlala kulenzawo.

Onkhe malanga, Babe Malatji bekatfota tinkhuni, kantsi  
Make Malatji bekakha emanti emfuleni.

Onkhe malanga, bebaba nekuhilitisana ngemisebenti yabo.



“Sengikhatsele ngulokutfota,” kusho Babe Malatji.

“Ohho, nami sengikhatsele ngulokuyokha emanti,” kusho Make Malatji.

“Ngeke ngisaphindze ngiye kuyotfota!” kutsetsa Babe Malatji. Walahla tinkhuni phansi wase uphumela ngaphandle kwendlu.



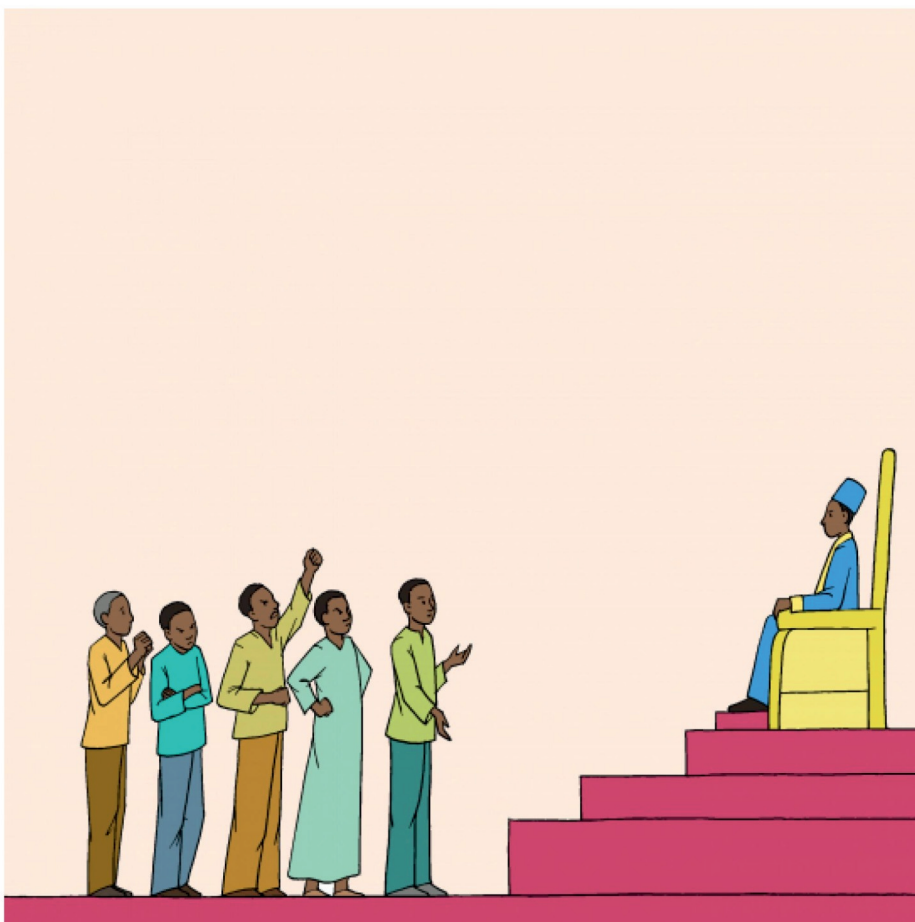
Kusenjalo, kwavela umlilo endzaweni, lowashiya imindeni leminyenti ingenawo emakhaya.

Umlilo wacala endlini yakaMalatji wase uchubekela nakuletinye tindlu.



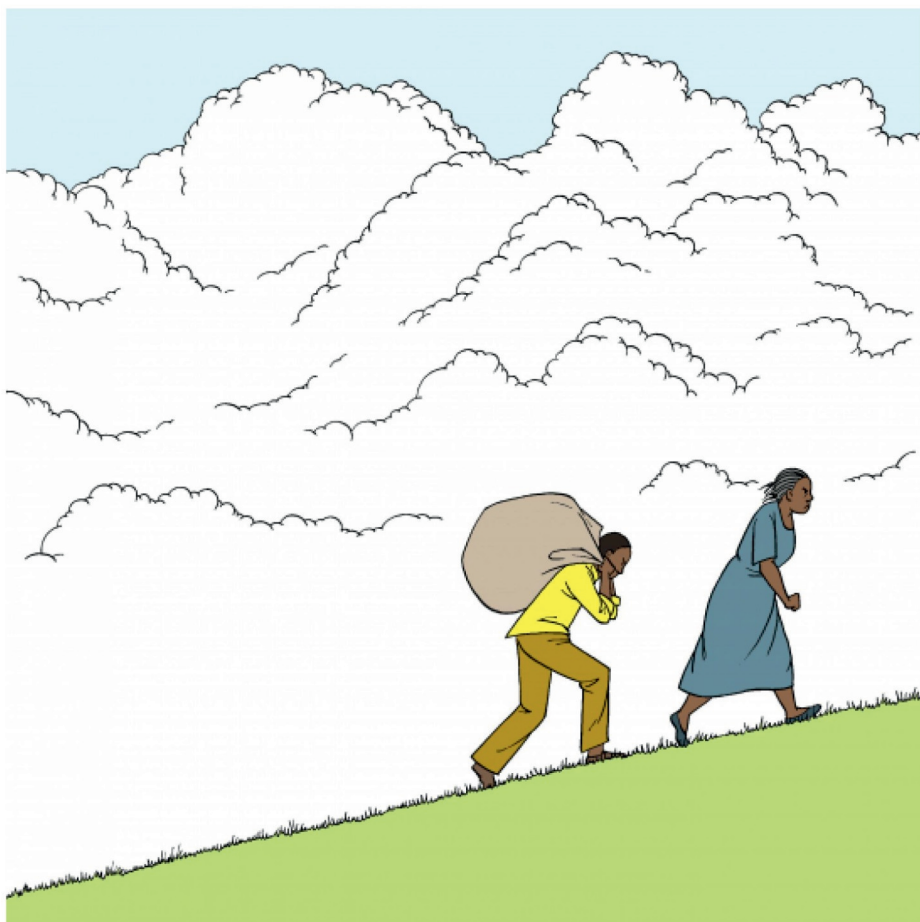
Make Malatji waphatseka kabi kakhulu. Wamemeta indvodza yakhe ayicela kutsi ibuye.

“Buya utongisita ngekwakha indlu lensha!” akhala. Ngesikhatsi asabuya Babe Malatji bekasatfobile.



Takhamiti tasenzaweni yaseGa-Molapo tancuma kuya enkhosini.

Tafike tayitjela konkhe lokwentekile endzaweni. Tafaka sikhalo ngaBabe naMake Malatji.



BakaMalatji batfukutsela kakhulu ngesikhatsi beva ngetikhalo.

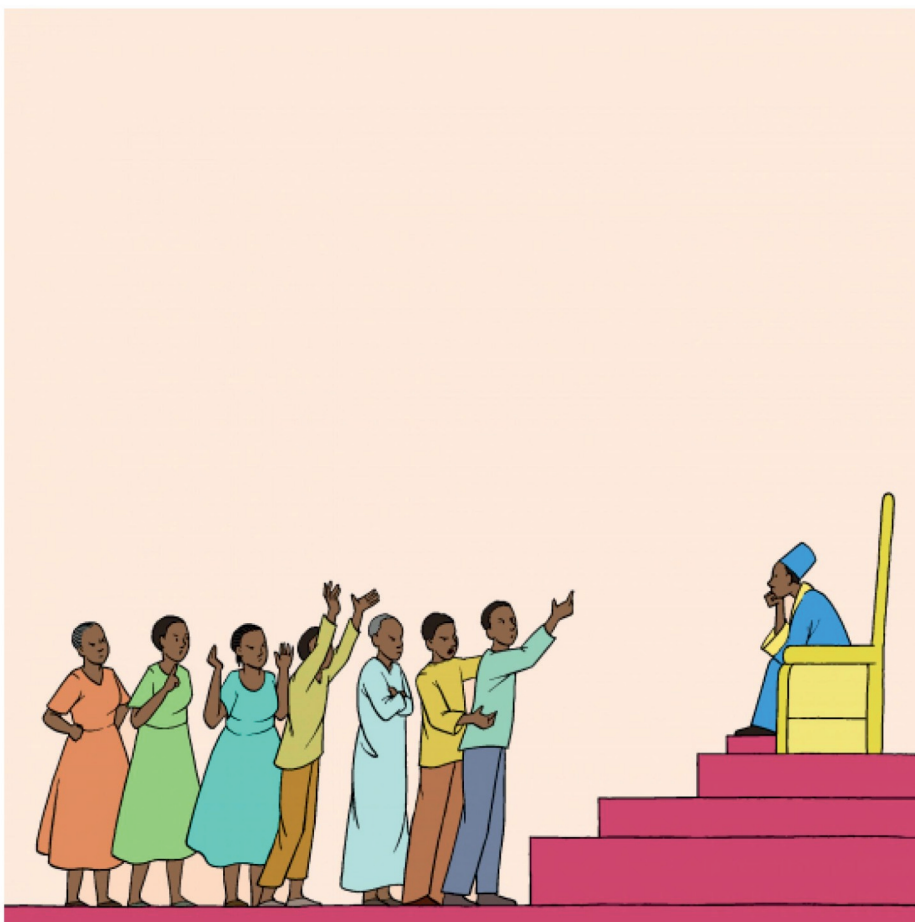
Babutsa tintfo tabo labetisele base bayahamba endzaweni.



Kusenjalo, kwavela lomunye umlilo ehlatsini lowahamba waze wayofika emakhaya.

Umlilo washisa tindlu tasenzaweni, washiya bantfu labanyenti emmangweni bete emakhaya.





Takhamiti taphindze tayobona inkhosi.

“Asinako kudla, emanti futsi kute nalapho sitohlala khona,”  
kukhala bantfu.

“Ngaso sonkhe sikhatsi nangabe Babe naMake Malatji baba  
nekuhilitisana kuba nemlilo!” kukhala takhamiti.



Nyalo, inkhosi Sello Kekana walalela tikhalo tebantfu.

Wacosha Babe naMake Malatji endzaweni yaseGa-Molapo.  
Wabacoshwa esifundzeni saseLimpopo.

Ngiyatibuta kutsi bayaphi ngalokulandzelako bakaMalatji?