



Naka le Nala ba ithuta ka lefase

Connie Makgabo

Vusi Malindi





Naka o na le Nala ka serapaneng. Ba a hlwekiša ebile ba bjala merogo.

“Naka, gobaneng re šoma boima ebile letšatši le fiša?”



“Re a hlwekiša ka gore re rata lefase le tikologo ya rena.

Tikologo ya go hlweka e raka malwetši le gona bana ba gola gabotse.”



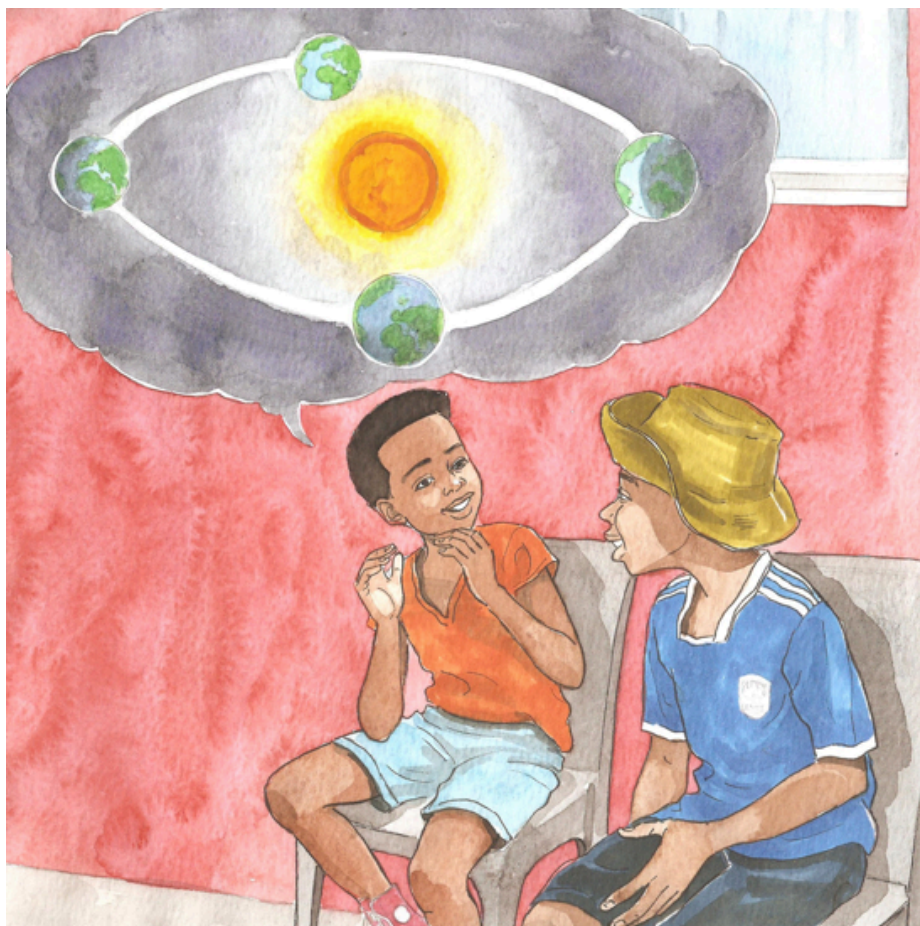
“Le gona, re bjala merogo gore re humane dijo tša go ba le phepo ye botse.

Se se tla re bolokela tšhelete”. Gwa realo Nala.



Nala a phegelela, “Na o reng ka lefase?
Mpotše ka botlalo.”

Naka a re, “A re dule fase ke go botše se
sengwe ka lefase”.



“Lefase ke polanete ya nkgokolo yeo re dulago go yona. Lefase le dikologa letšatši. Go na le batho ba dibilione tše 7.9 mo lefaseng!”



“Lefase le bopilwe ka naga, moya, le meetse. Diphedi di phela godimo ga lefase ka gobane go fiša kudu ka gare,”
Naka a hlaloša.



“Ge e le gore lefase le dikologa letšatši,
gobaneng re sa we?”

“Maatlakgogedi a lefase a a re goga
gore re se we,” gwa araba Naka.



“Re ka hlokomela bjang lefase la rena?”
Gwa botšiša Nala.

“Ga ra swanela go le tšhilafatša. Re swanetše go tsošološa dilo gore re fokotše ditšhila.”



“Re ka tsošološa polasetiki, pampiri,
galase, le dikane. Re ka dira
ditšweletšwa tše difsa ka dilo tša go
tsošološwa. Re lahla dilo tše dintši
kudu.”



Naka a ruma ka gore, "Re swanetše go hlokomela lefase gore batho ba kgone go phela gabotse."

Nala a goeletša, "A re boele mošomong bjale!"

—Dipotšišo

1. Naka le Nala ba dira eng? Gobaneng?
2. Ngwala dintlha tše nne ka polanete ya rena, lefase.
3. Gobaneng re swanetše go hlokomela lefase?
4. Na go tsošološa dilo ke go dira eng?
5. Ke dife dilo tšeo di ka tsošološwago? Neela mehlala.
6. Go ka dirwa eng gape go šireletša lefase?



Ulwazi Lwethu is a Zenex Foundation funded and initiated project to develop a series of graded and leisure African language readers and teacher support materials. This project is targeted at teaching and supporting learners in the Foundation Phase to improve their home language reading and understanding. The readers have been originated in nine African languages in collaboration with Molteno Institute for Language and Literacies, Nelson Mandela Institute for Education and Rural Development, Room to Read South Africa, and Saide. All resources are developed as Open Education Resources (OER).



NELSON MANDELA
INSTITUTE FOR
EDUCATION AND
RURAL DEVELOPMENT



World Change Starts with Educated Children

Your attribution should include the following:

Title: Naka le Nala ba ithuta ka lefase

Author/s: Connie Makgabo

Illustrator/s: Vusi Malindi

Assurer/s: Dikeledi Queen Shai

Language: Sepedi

© Zenex Foundation - Saide 2023

CC BY includes the following elements:

BY  - Credit must be given to the creator

