

INgwenya neNkawu zazingabahlobo abakhulu.

INgwenya yayihlala emlanjeni.

INkawu yayihlala kumthi owawungasemlanjeni.



INgwenya yayisitya iintlanzi ezisemlanjeni.

INkawu yona yayisitya iziqhamo ezisemithini.



INgwenya yayigulelwa kakhulu ngumntwana wayo.

UMakhulu weNgwenya wayixelela wathi, "Sisibindi seNkawu kuphela esiya kunyanga umntwana."

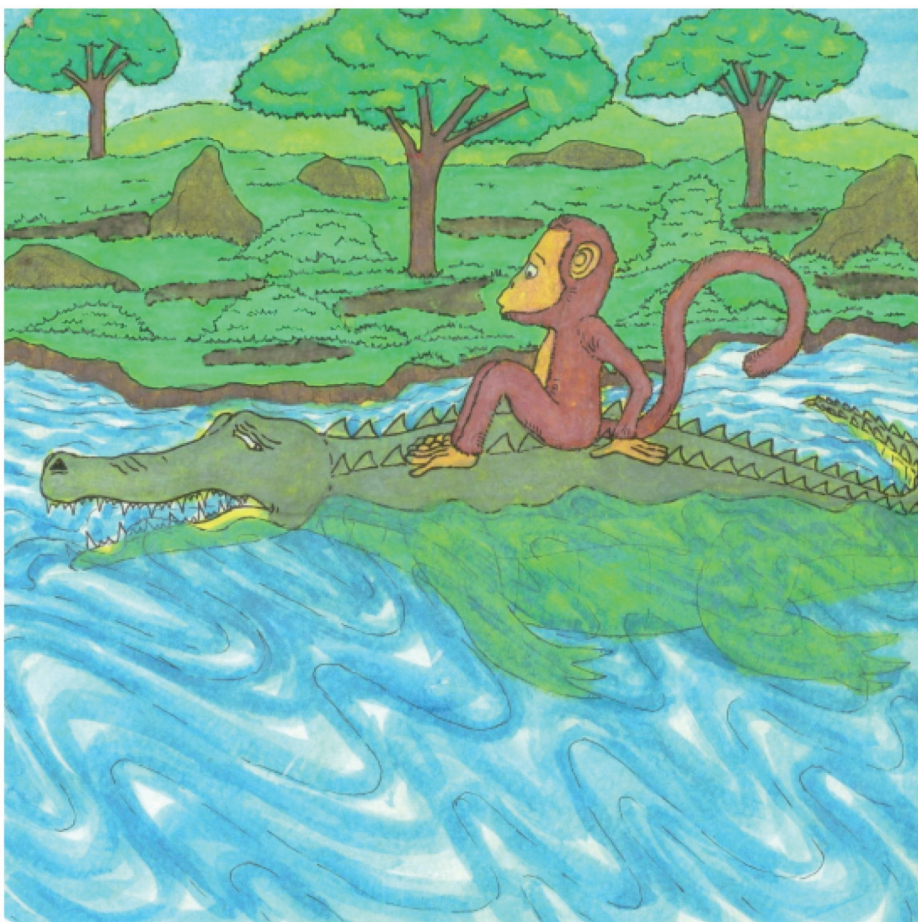




INGwenya yayimemela emzini wayo emlanjeni iNkawu.

INGwenya yathi mayibelekeke kuyo emqolo iNkawu.





Bathi besadada njalo, iNgwenya yaxelela iNkawu ngomntwana wayo ogula kakhulu.

“Sisibindi seNkawu kuphela esinokumphilisa,” yancwina kalusizi iNgwenya.



“Ngowundixelele phambi kokuba sisuke!” yatsho kalusizi iNkawu.

“Isibindi sam ndisigcina emthini, masihambe siyokusithatha,” yatsho.



INgwenya yadada yabuyela emva elunxwemeni.

INkawu yaxhuma yehla kumhlana weNgwenya yabaleka yakhwela emthini.

Yalinda iNgwenya.





Yalinda undolinda iNgwenya, yabe iNkawu ingabonakali nangetshengele.