

Ngwenya naMfene bebabangani labakhulu.

Ngwenya bekahlala emfuleni.

Mfene bekahlala esihlahleni lesisedvute nemfula.



Njalo Ngwenya abedla tinhlanti phansi emfuleni.

Mfene adla titselo etulu esihlahleni.



Wagula kakhulu umntwana waNgwenya.

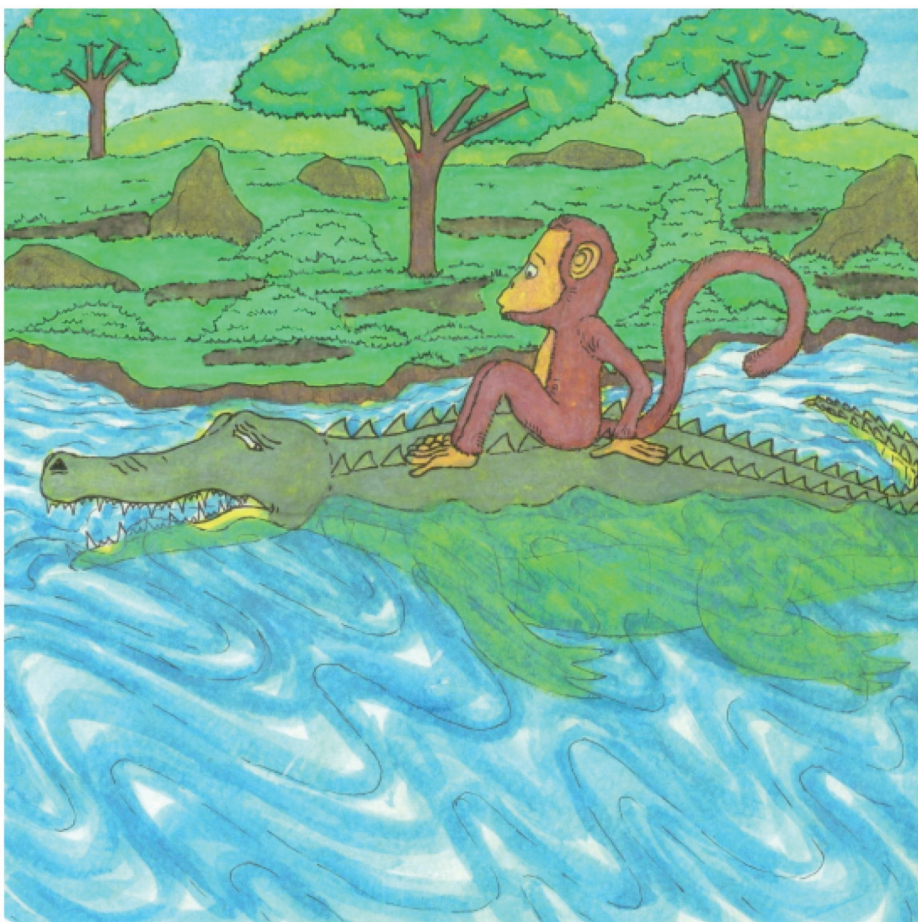
Gogo waNgwenya watsi abatfole sibindzi lesincane semfene kutomelapha.





Ngwenya wamema Mfene ekhaya lakhe lelihle, ngobe angakwati kubhukusha wamema emhlané wakhe lomubi.



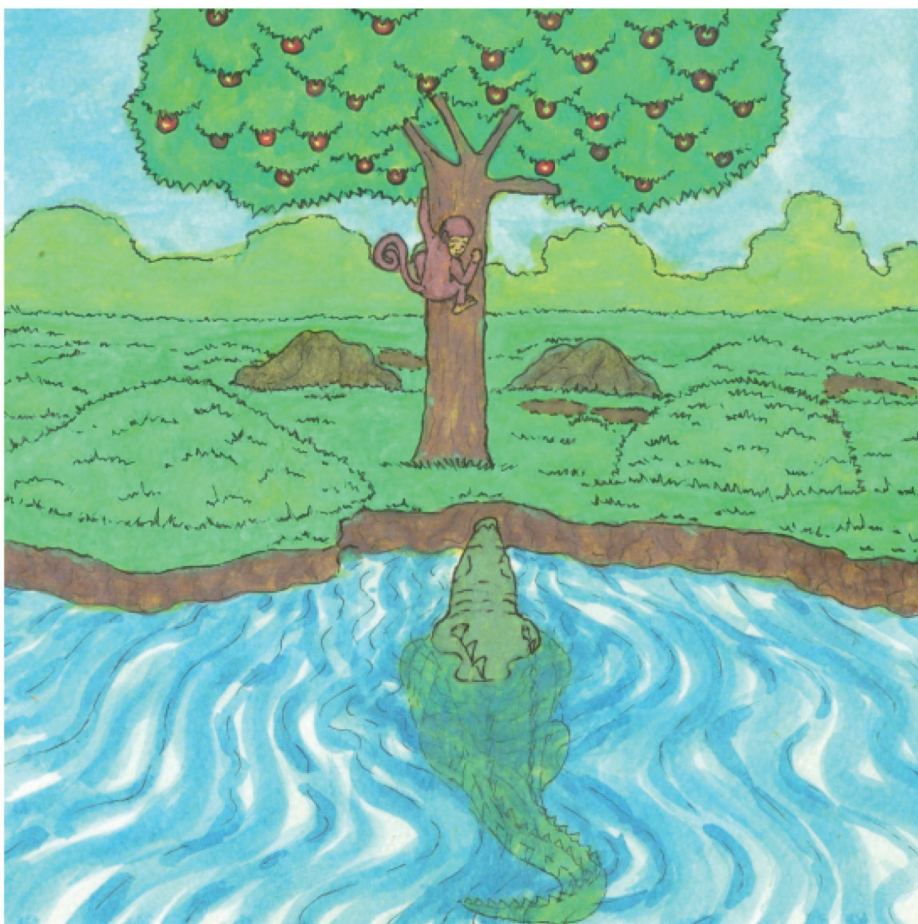


Ekhatsi nemfula Ngwenya wacocela Mfene kutsi ugulelwa ngumntfwana, kute aphilile udzinga sibindzi lesincane semfene.



“Hhawu, mnganami, ngabe usho singakesuki, phela sibindzi sami sihlala esihlahleni,” kusho Mfene.

“Asijike sisilandze.”



Nembala bajike.

Mfene azubele esihlahleni atsi nya.

Ngwenya walindza.





Ngwenya walindza sikhatsi lesidze, kepha do! Mfene kubuya.