

Pamu Pamu Yelinje

Safandaana : Pensa Limungu

Natalindaana : Manyeka Arts Trust

Maali xaranyinfanan minisitirinkan da ke kitaabe
bakken jaamari.

Minisiritirinka ke golliranka AMALAN da a nuxudufoonun
segesege.

Soninke

Mali

Copyright © 2021, SIL LEAD Inc. et SIL International



<http://creativecommons.org/licenses/by/4.0/>

Cette création peut être utilisée à des fins commerciales. Cette création peut être adaptée ou complétée. Les mentions relatives aux droits d'auteur, d'illustrateur, etc. doivent être conservées.

Yillandaano : AMALAN (Ncanba Silla do Sixina Saaxo).

Sefexanne : Muusa Hanmadi Jara.

Histoire racontée par Pensa Limungu. Transcrit et traduit par Kapilolo Mahongo et Marlene Winberg.

Adapté de l'original, *Pam-Pam bird*, Copyright © 2014, Manyeka Arts Trust. Sous licence CC BY 4.0.

Xawaranaaxunde, *Pam-Pam bird*, Copyright © 2014, African Storybook Initiative. Licence CC BY 4.0.

www.africanstorybook.org

Ke kitaabe dabari ti do ke leminanxaranfedde kappalenmon deemanden saabu danja ya ken ga ni All Children Reading: A Grand Challenge for Development (ACR GCD): United States Agency for International Development (USAID), World Vision do Australian Government a do kitaabinfedde Global Book Alliance. SIL LEAD, Inc. yan da golle ke dabari, xa ku kappanlenkafonu ACR GCD do kitaabinfedde Global Book Alliance sinmayun feti. Sere su nda ke kitaabe yilla ti a moxonma su ya, kafo ACR GCD fo yillante feti, a do xa juumeyu beenu nda wari a noxon di, kafo ke batte feti.



**GLOBAL BOOK
ALLIANCE**



USAID
DU PEUPLE AMERICAIN

World Vision

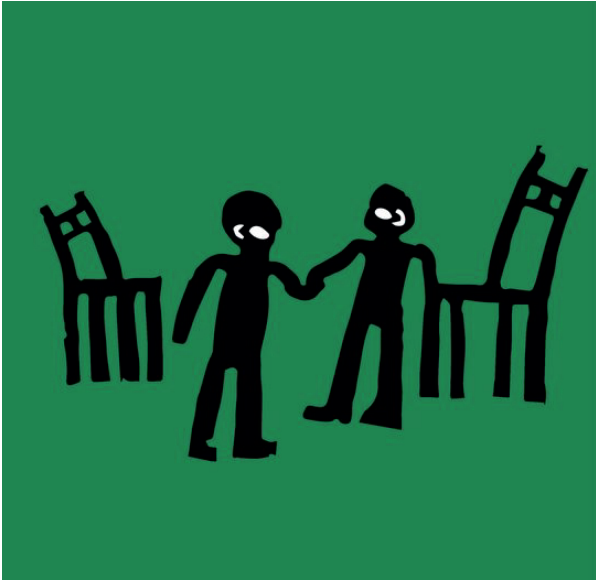
**Australian
Aid**



Kande me xanaana ma ni kalahari gunjuran
ɗa. A do tumuja katon ya ni riini na i koren
birandi ti i ya moxosiri.

Yelinbaane ni non ɗa, a toxon ga ni Pamu
Pamu. Kande ni a mulla na ken raga. Yeliɗe
ke suttun yintun ya ni jaana a danɗa
bundanɗu yi. A ra ma ni Pamu Pamu ragana
ma na a kari.

A ga na yeliɗe ke xence a bundanɗun ni
dagana do fanken ya yi. A gan katta Pamu
Pamu ragana na a suttun yintun doofa !



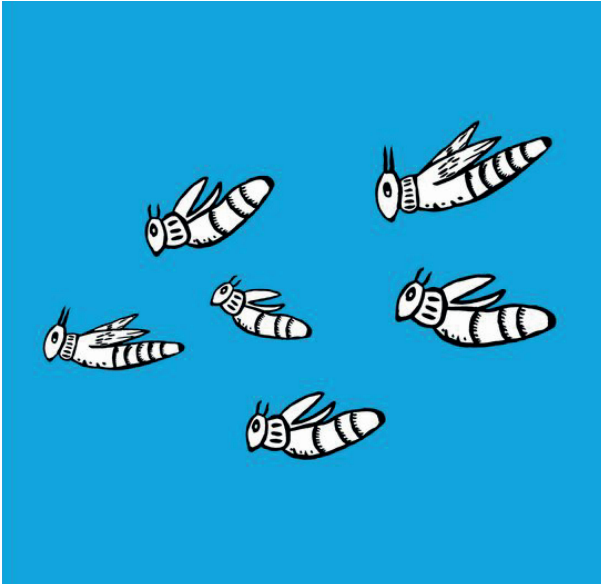
Kande daga i kaara doomagumen bannen ɗa ti a na i deema, ke moxo yi « N deema, n ga in katta Pamu Pamu suttun yintun kitana moxo be yi na a ɗa in bundannen solinjun ɗa, n na yelinje ke kitana kan moxo yi ? »

Dooman jaarandaanan ti « Daga, an na yinbe kumu. Yinben kumi falle fuujun su ga na daga na fo bucce be toxo, an na ken raga na a ɗa yigefo yi an bappen ɗa. A wa Pamu Pamu fuutunu katta du yi. »



Kande nta a tu ti jaarandaana ke do yeliŋe
Pamu Pamu ni menjanŋun ya yi. Pamu Pamu
ŋi riini dinma su ya jaarandaana ke baanŋe.

Yeliŋen ga ri jaarandaanan banŋe, yugon ti
a danŋa « N faayi an sobindini, n da an
ragemoxon ko xapaanan danŋa. An ga na
gundunyinbe wari, an na tallan kanpi
segene. N na a wari sere be ga n goto
diinanta i funen ŋa. »

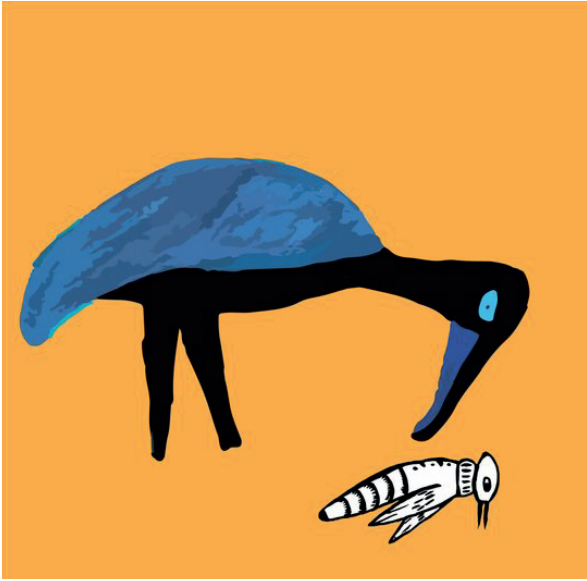


Kande da Pamu Pamu xananden joppa.

A taaxu gunnen ɲa na i gumon moxon
gemundi. Tiiden ga bagu, a da
sokkikaawanten fuute ma a ga kumini.

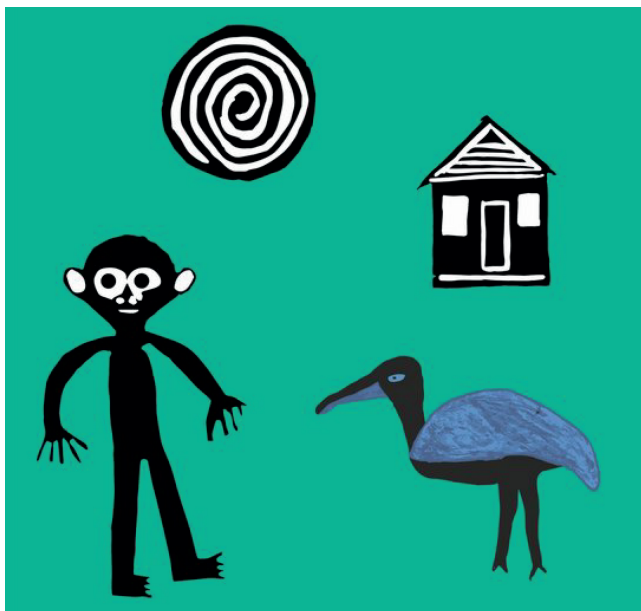
Fuupun su wuru, nan laato yinben ɲa.

Kande katu buuri buccinne ragana na a ro i
bappen ɲa.

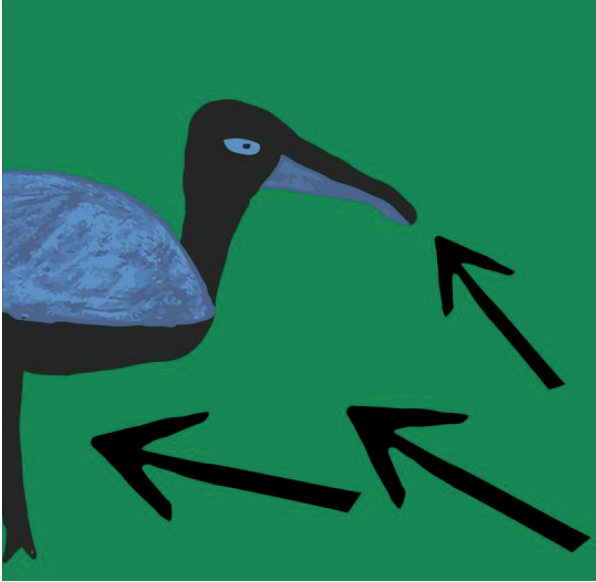


Yeliŋe Pamu Pamu kori du ragana buuru
daxamunte be ga a yaaxon ŋa Kande bappen
noxon ŋa. A yanqa katta a yi na a jabati ti i
soomo liŋun ŋa.

Kande taron kati yeliŋen xaasaxannen
ŋa. « Pamu Pamu, Pamu Pamu... » Kande
wuru katta i bappen ŋa. Yeliŋen rage.



Pamu Pamu da Kande xanjo, a na i wara. «
Ayi ! Lenki, n ma in wara do a batten ɗa. An
ɗaji in xalle yi lenki ! An yintun ya ɗaana in
danna solinɗun ɗa, i ga kanpini do fanken ɗa
xo an yinme moxo. »



Pamu Pamu xaari nan ti « An ga na in kari an ntaxa yinte kitana na a ɲa solinɲun ɲa, baawo, a na ɲiini in ke ga kara. N wara, n da a laayidun wutu an danɲa ti in wa in yinten kinni an ɲa xasunxulle su yi. »



Kande daga i banjen ɗa na solinju kurunbo dabari. Soron ga da solinjun wari, i ti « Ho ! Ho ! Xa da ke xajaana faayi. Pamu Pamu yintun ga a maxa a ga da i ɗa solinjun ɗa. Keeta a wa riini fo gabe kita gunnen ɗa. Na o falla yigefo liju ya. O na dinmu bagandi. »



Ke wuro yi, jaarandaanan da faaren xayi jaman ɗa na xarɗaana ke nuwaari a do Pamu Pamu dukitaye.

Gelli ken koota, xarɗaana sirun wa yelije Pamu Pamu xiisan laxamini i renmun danɗa xo koota liji danginte yi.

Siine 1998 taarixi konɗaana yogo Pensa Limungu (1949-2007) ya n da ke taarixu suugu a do Khonga jaxamalanu Marlene WINBERG danɗa. A ken ya n da a faccari a do Kapilolo MANONGO. A wa a koyini ti xapaanan na i jamun kitana funtifoounun ya yi, a nan xawa i sorogono, a nta xawa i bonondini.