



KWANE itace na Banyan da dogon lokaci, Ya kasance mai girma da yawa a dukan kasar.



Kayan itatuwa biyu na Palash a cikin lambu mai sanyi,
Kwararru mai tsami ga kudan zuma don sha.



Kwayoyin Pipal guda uku a kan titin kauye, Mudun 'ya'yan itace don kayan abinci don cin abinci.



Bishiyar Neem hudu a cikin gonaki, Kernels masu daci don kiyaye kwari.



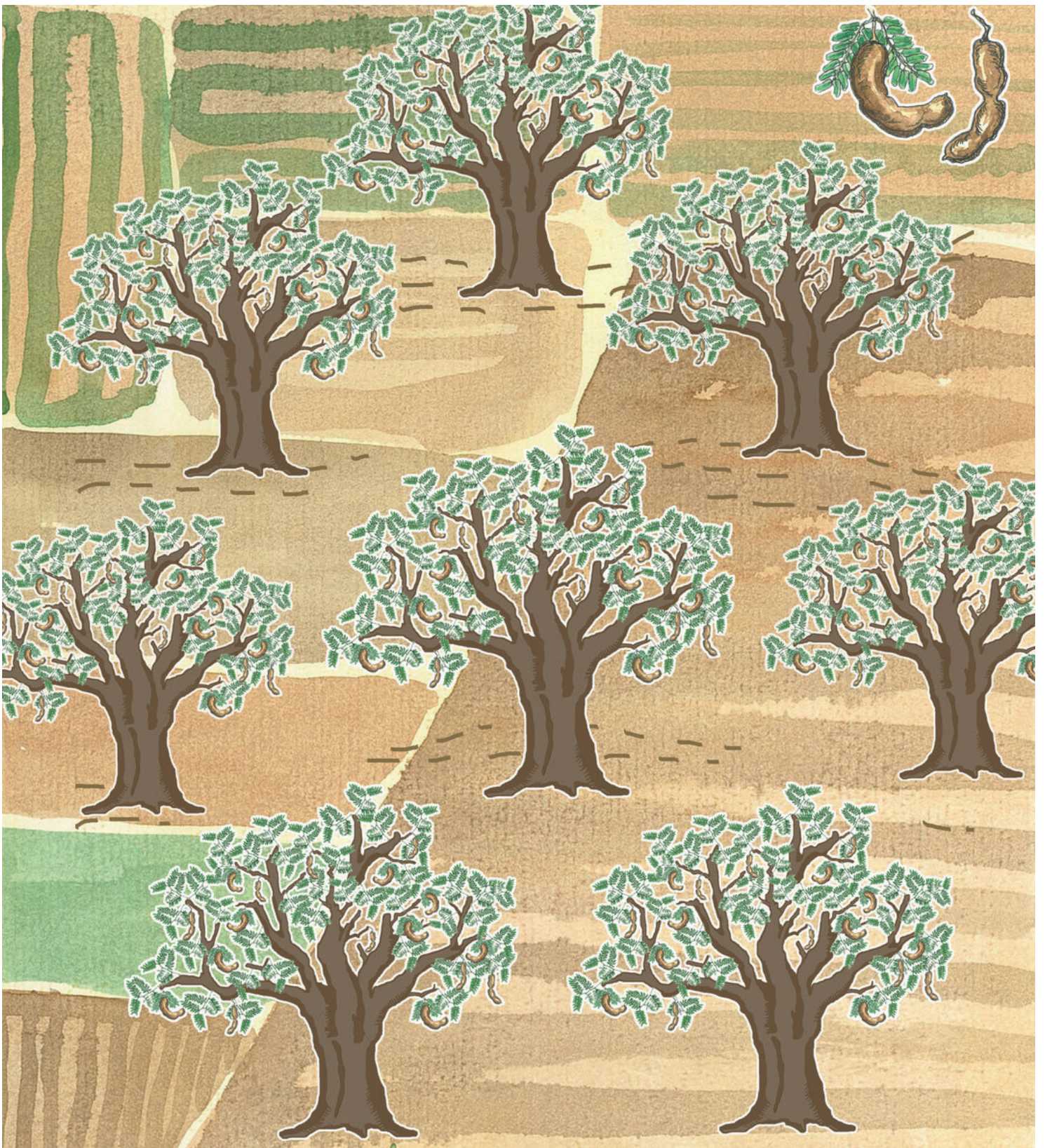
Bishiyar guda biyar na Jamun kusa da kogi, 'Ya'yan' ya'yan itatuwa masu tsami suna shinge gandun daji.



Bishiyoyi Coral shida kusa da gona, Hanyoyin furanni suna jawo hankalin tsuntsaye masu yawa.



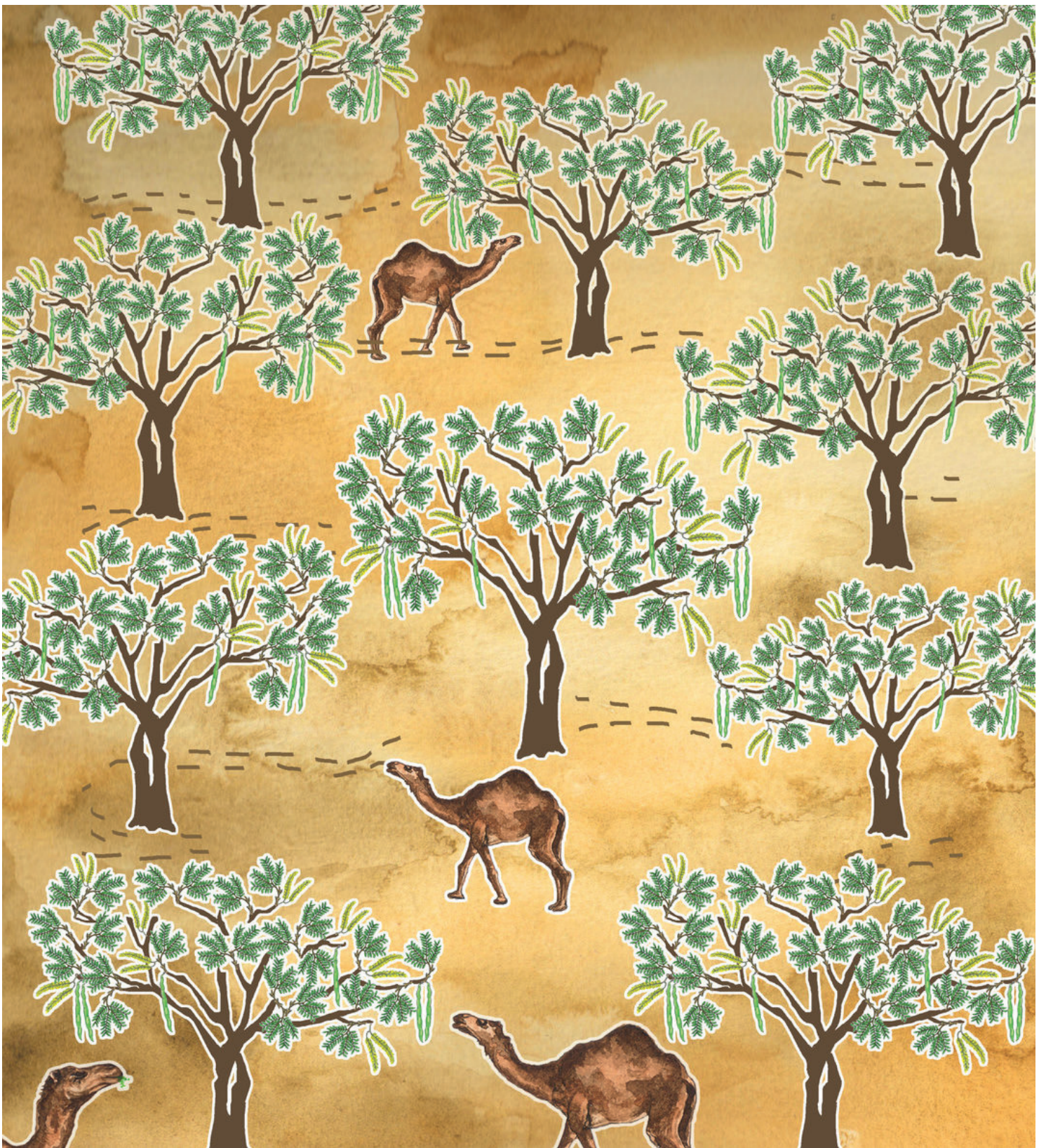
Bishiyoyi bakwai mai kanshi a kan dutse mai tsayi, Abin kanshi don yin turare da mai.



Bishiyoyi Tamarin takwas a wani karamin gariTangy pods don abinci mai dandano kamar yadda muke so.



Itatuwa Sal tara a cikin gandun daji, Fatay ganye don yin bauta faranti.



Itatuwa Khejri goma a cikin wani zafi hamada, Karamin rakuma don rakuma su ci.

Bishiyoyi suna bada hiska don mu yi numfashi.

