

La classe de CM2 va visiter aujourd'hui le complexe scientifique. Et les six élèves perturbateurs resteront fidèles à eux-mêmes: ils feront n'importe quoi ! Peux-tu aider Mademoiselle Smita à jeter un œil sur la classe en surveillant, plus particulièrement, ces six élèves dans chaque laboratoire?

Jay

Nidhi

Chintu

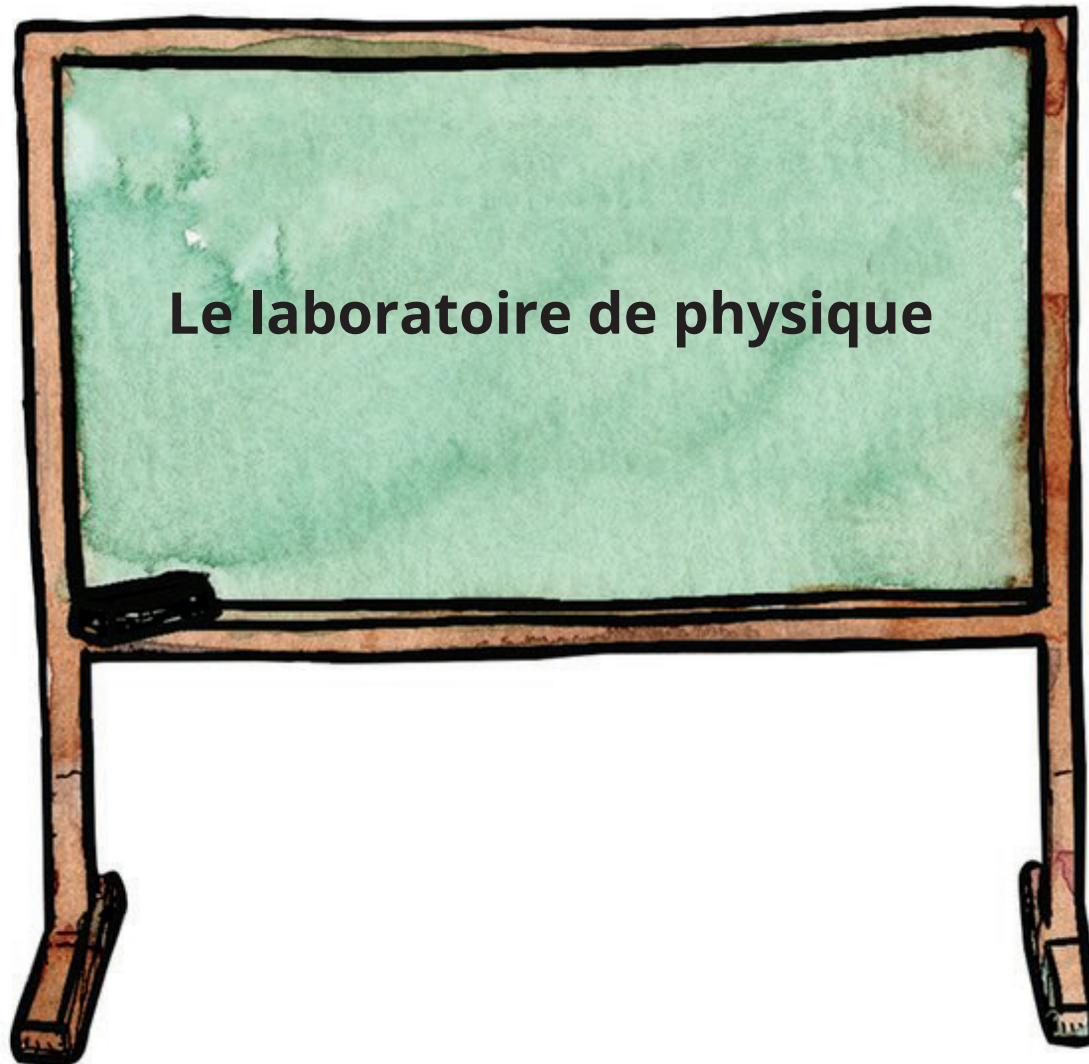
Abbas

Karan

Gayathri



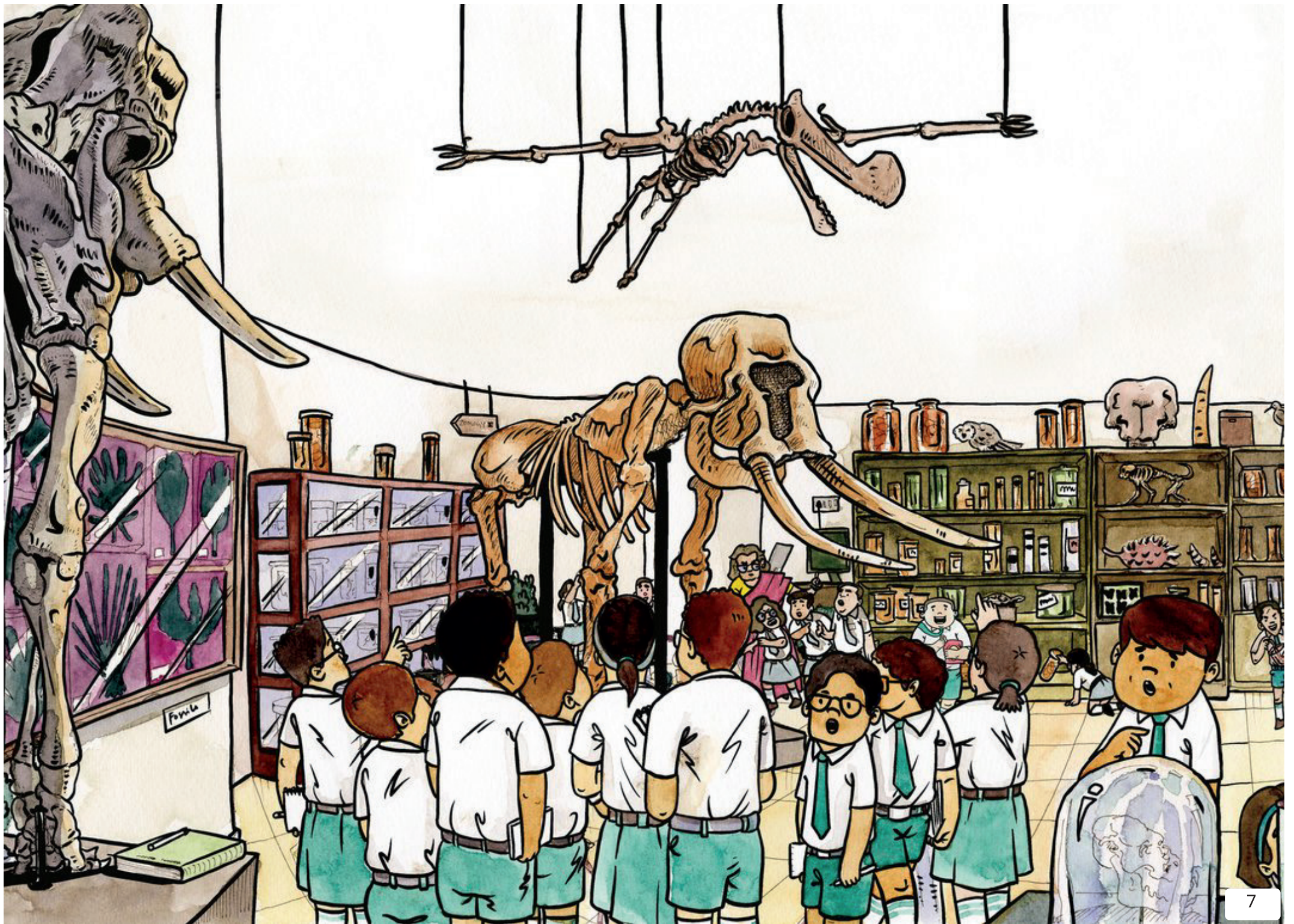




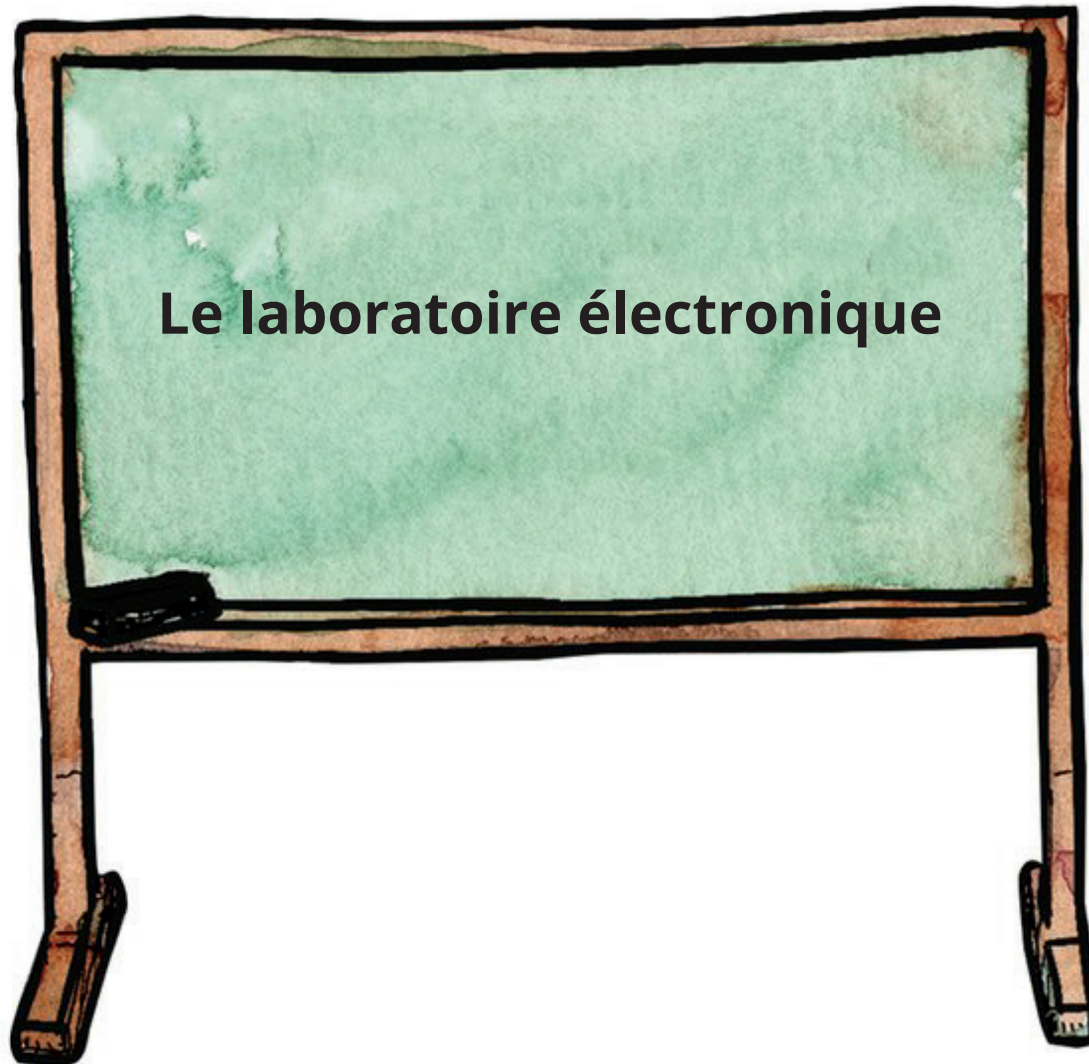




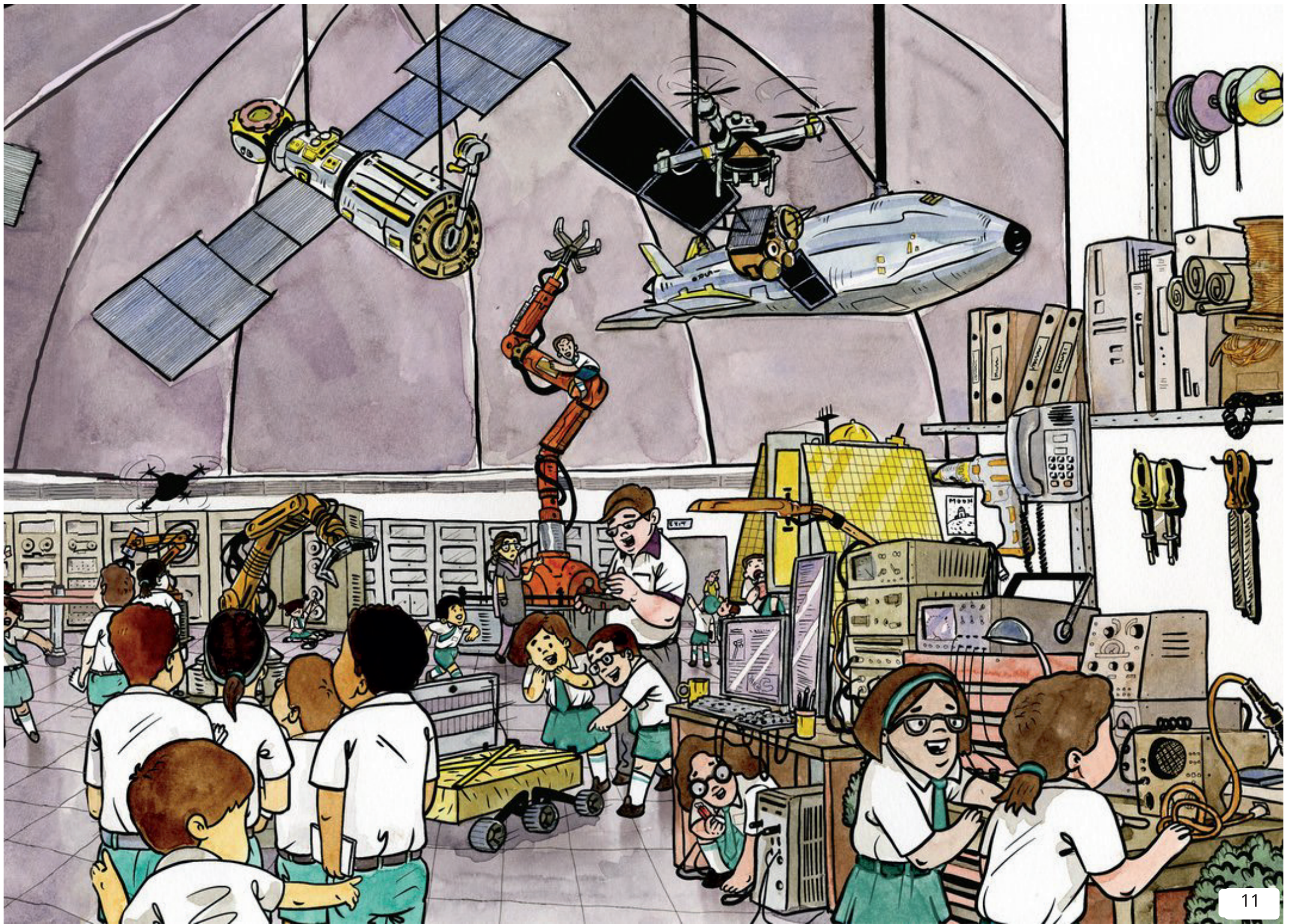




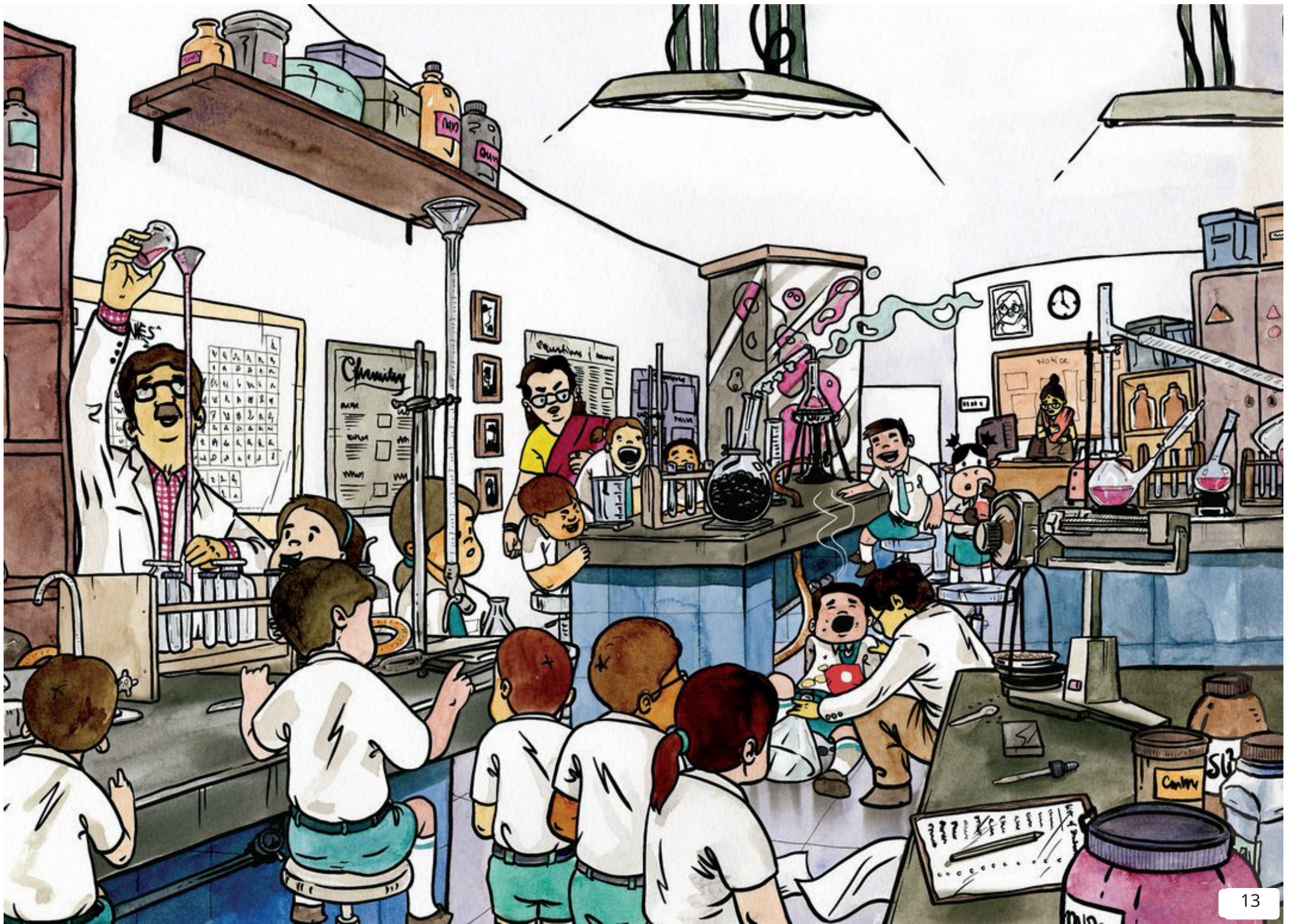




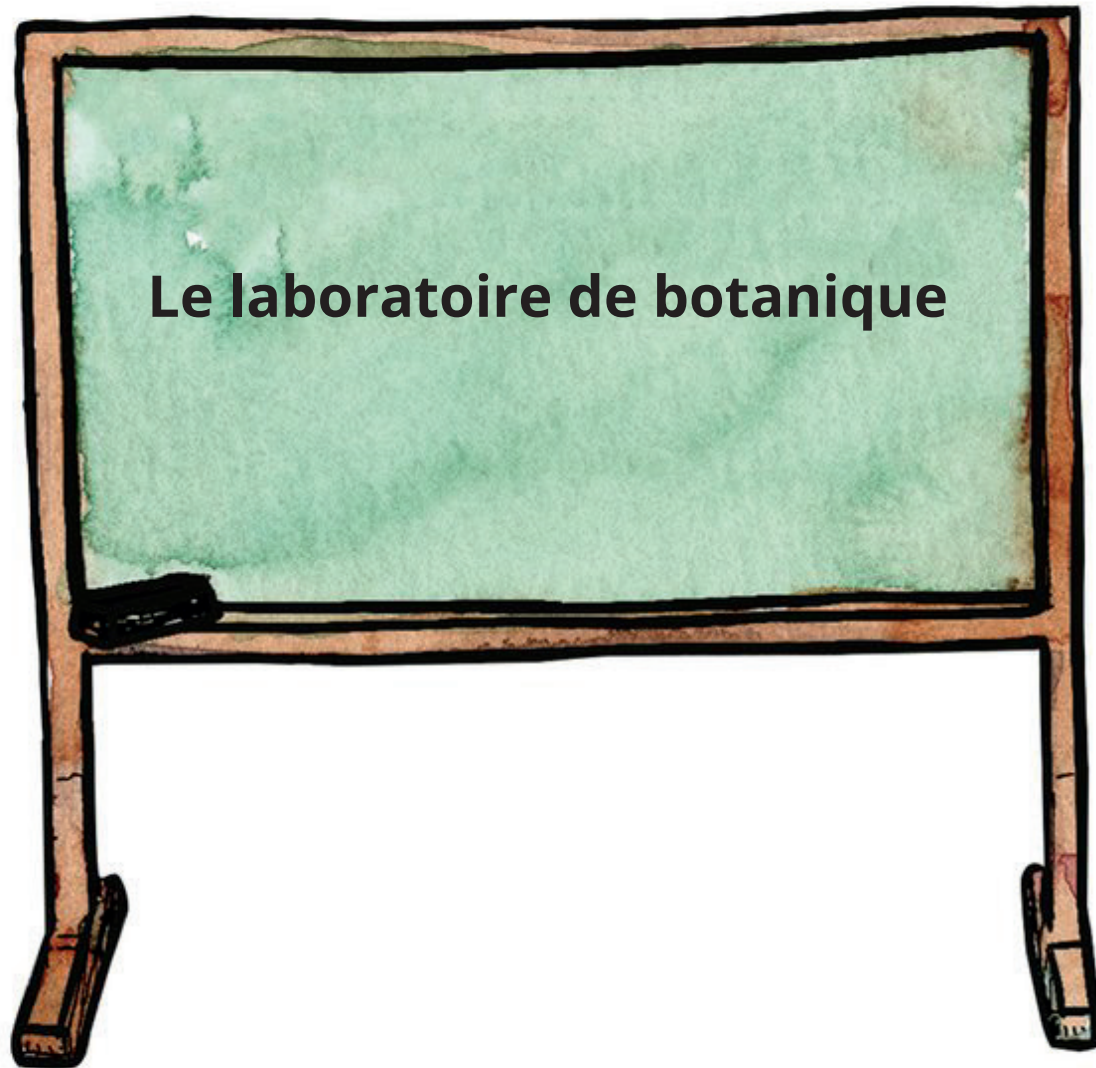










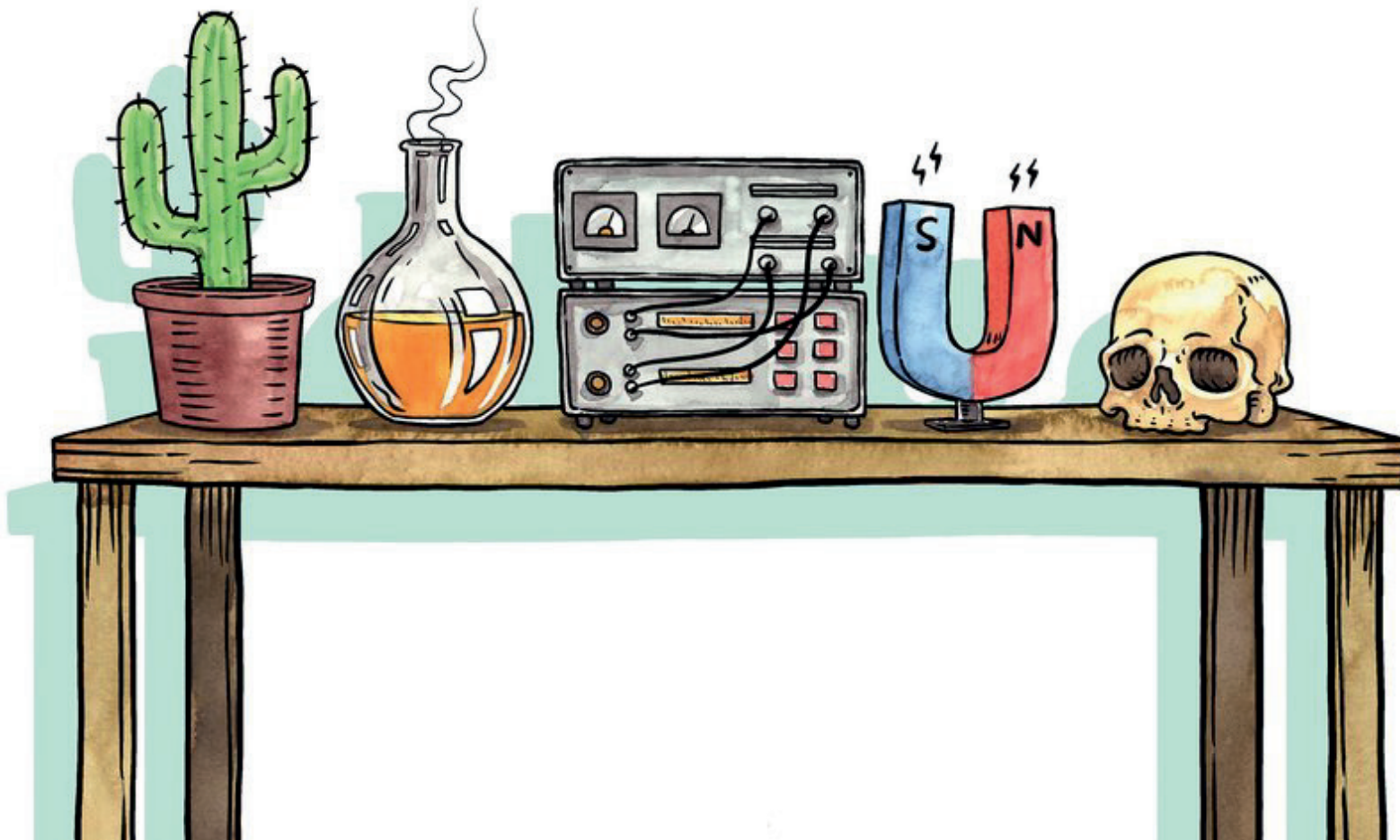








Peux-tu revenir en arrière et essayer de trouver les éléments suivants dans les laboratoires?



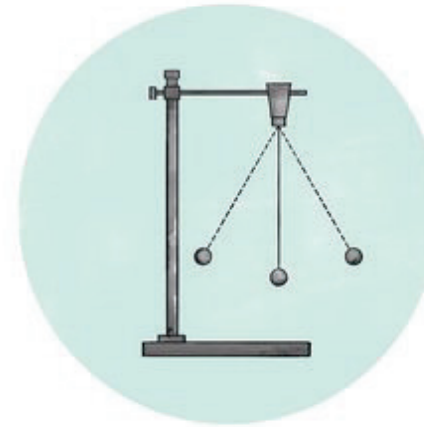
Le laboratoire de physique



Un aimant



Un prisme



Un pendule



Un télescope

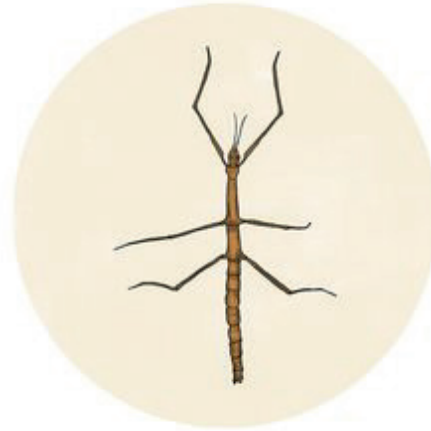


Un disque de Newton

Le laboratoire de zoologie



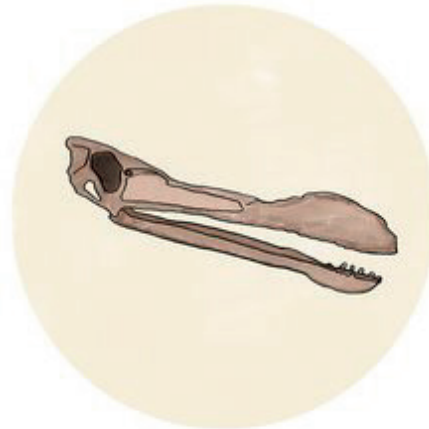
Le crâne d'un
humain



Un phasme



Le crâne d'un tigre à dents de
sabre (ou Smilodon)



Le crâne d'un
Ptérosaure



Le squelette d'un singe

Le laboratoire électronique



Un drone



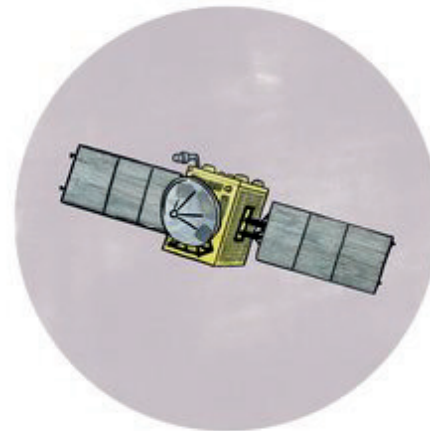
Un bras de robot



Une clé USB



Un voltmètre



Un satellite

Le laboratoire de chimie



Un pilon et un mortier



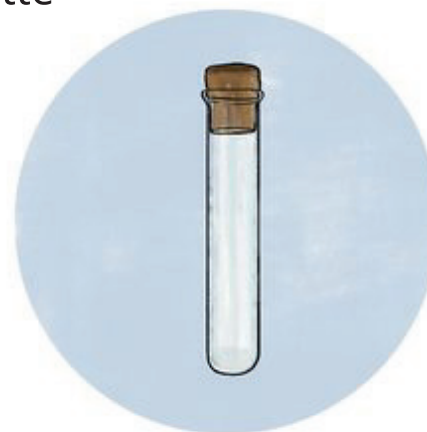
Un compte-gouttes
ou pipette



Un bécher



Un bec Bunsen

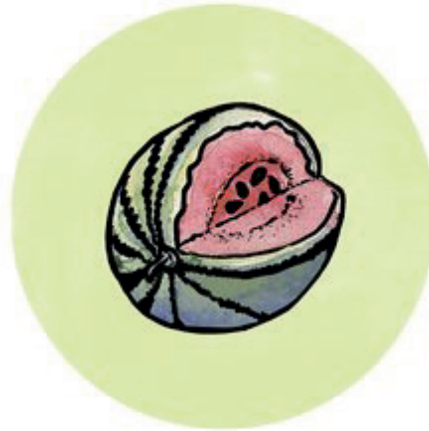


Un tube à essai ou
éprouvette

Le laboratoire de botanique



Un microscope



Une pastèque



Une plante carnivore



Un cactus



Une plante du missionnaire ou
plante à monnaie chinoise



This book was made possible by Pratham Books' StoryWeaver platform. Content under Creative Commons licenses can be downloaded, translated and can even be used to create new stories - provided you give appropriate credit, and indicate if changes were made. To know more about this, and the full terms of use and attribution, please visit the following [link](#).

Images Attributions:

Page 23: [Electronics lab equipment](#), by [Abhimanyu Ghimiray](#) © Pratham Books, 2020. Some rights reserved. Released under CC BY 4.0 license. Page 24: [Chemistry lab equipment](#), by [Abhimanyu Ghimiray](#) © Pratham Books, 2020. Some rights reserved. Released under CC BY 4.0 license. Page 25: [Botany lab equipment](#), by [Abhimanyu Ghimiray](#) © Pratham Books, 2020. Some rights reserved. Released under CC BY 4.0 license.

Disclaimer: https://www.storyweaver.org.in/terms_and_conditions



Some rights reserved. This book is CC-BY-4.0 licensed. You can copy, modify, distribute and perform the work, even for commercial purposes, all without asking permission. For full terms of use and attribution, <http://creativecommons.org/licenses/by/4.0/>

