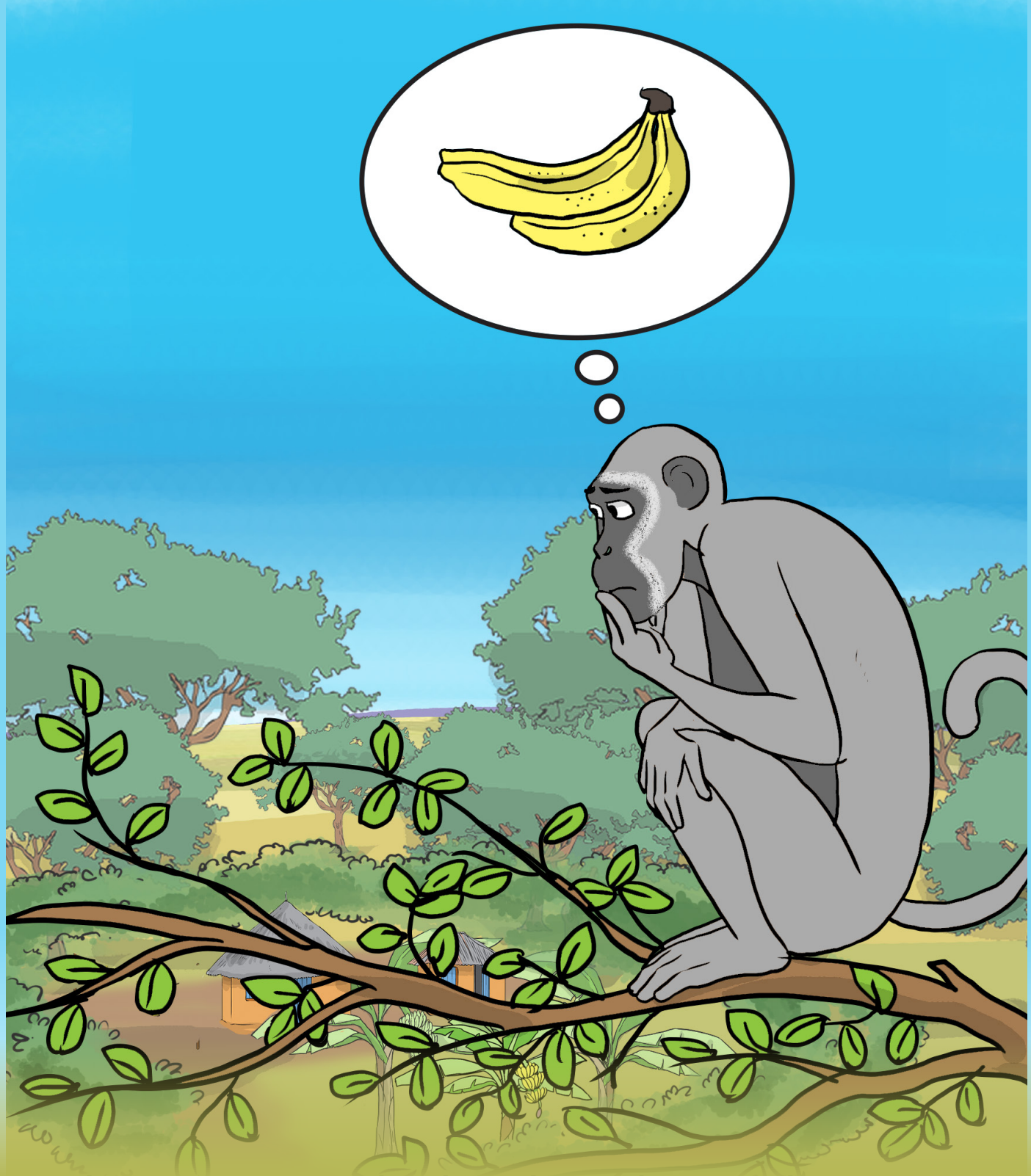




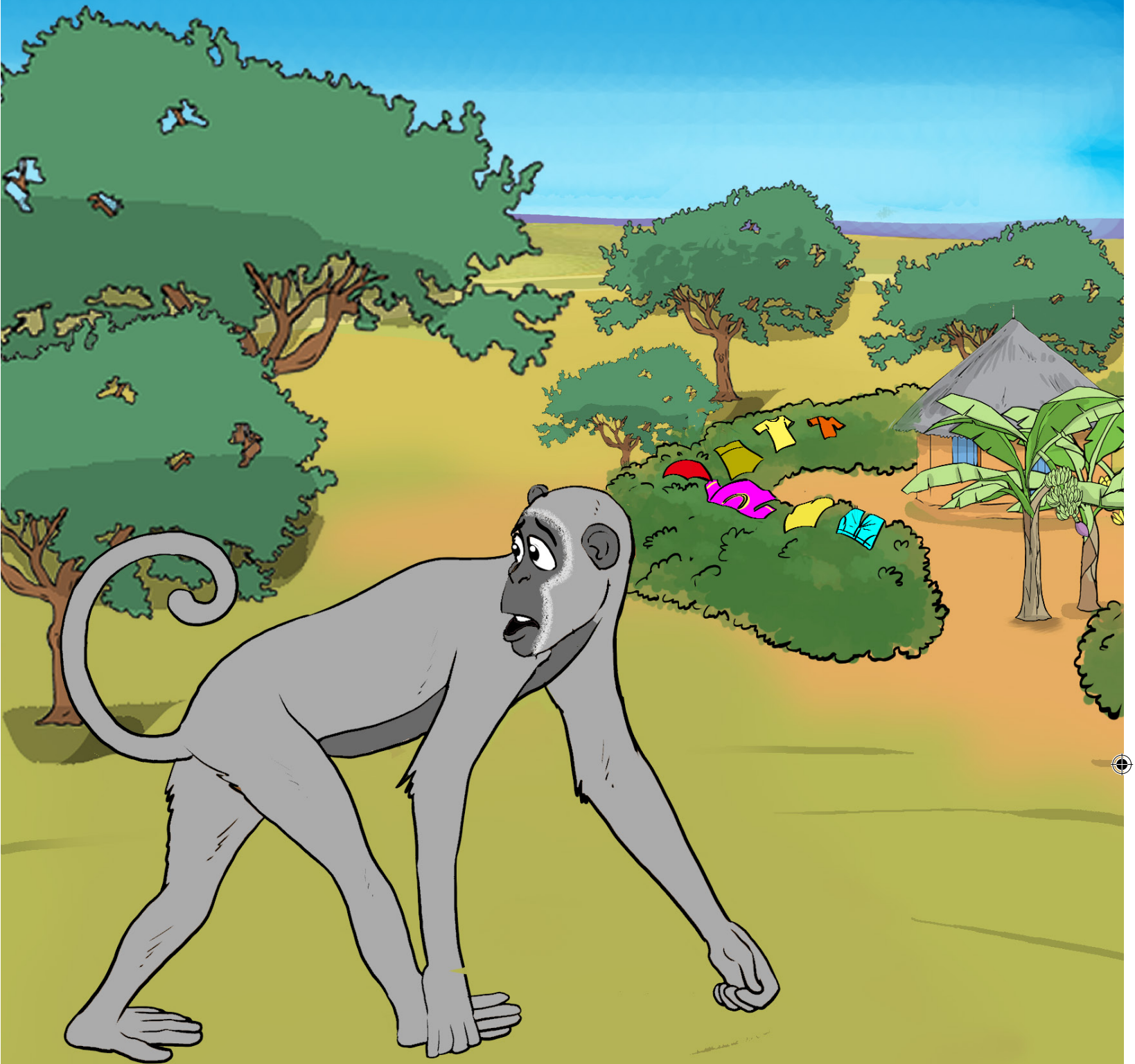
Ūyũ nĩ Nzale. Nzale nĩ Ngũlĩ. Mũthenya ũmwe
Nzale nĩweewie nzaa na asũanĩa kũthi kũmantha
lĩu.





Nzale n̄wasũan̄ie kũthi ndũan̄ĩ kũmantha maiũ
aye. Nzale n̄weesĩ kana n̄ĩ mbanga kũthi ndũan̄ĩ.
Andũ n̄imatonya kũmũaa.





Nzale nīwaendie ndūanī ĩla yaĩ vakuvĩ. Nīwaendie atũlĩlangĩte nzĩanĩ kavola. Ndendaa kwoneka nĩ andũ, kwoou alĩsa mũtĩ waĩ vakuvĩ na ndũa.





Nzale nĩwoonie andũ na oona maiũ meu mũũndanĩ.

Nzaa yake nĩyongelekile. Īndĩ akĩa kũlika mũũndanĩ
andũ maikamwone.



Nzale nĩwoonie andũ mekĩite ngũa nake atw'a
kwĩkĩa ngũa o tamo. Nĩwaendie wiionĩ vala
vanĩkĩtwe ngũa. Oosa sulualĩ mũkuvĩ na sati.

Nzale nīweekīie ngūa na ekala ta kavīsī kanini.

Nīweesililye kana andū yu memwona we ta mūdū.





Nzale nĩwalĩsile mĩtĩnĩ ya maiũ na andũ
mayaamwona. Nĩwatũlĩile athi vakuvĩ na maiũ ala
meu. Nzale nĩwatiũũkie na avalũka nthĩ.

Kwondū wa kūvalūka kwake, nzale nīwaamūkisye
ngitī yakomete. Ngitī nayo yambīia kūkūma.

◀Andū nīmasiisye nī kyaū ĩndī nzale aī vau nthī
wavalūkīte.

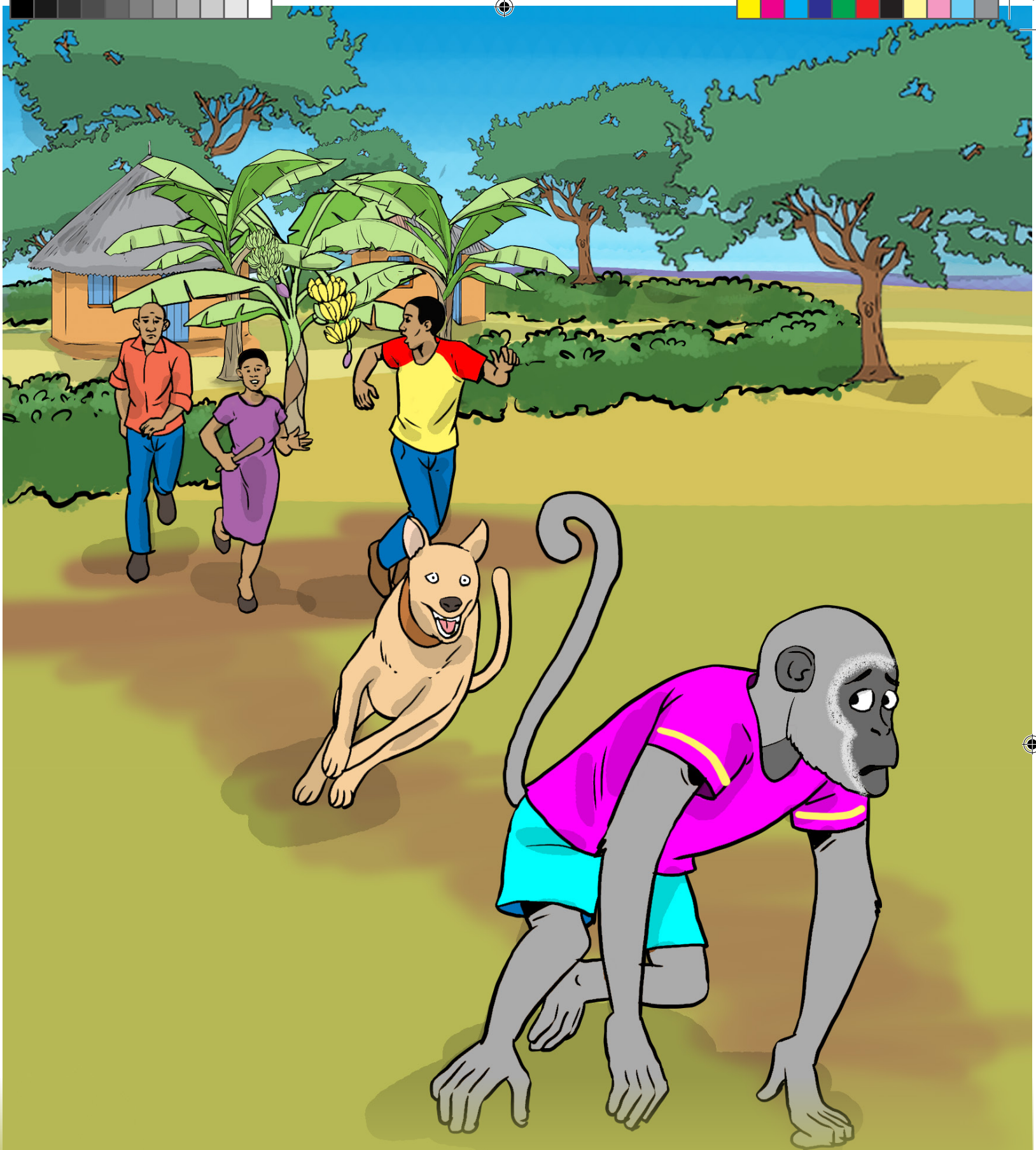


Nzale nīwaamūkie na alīsa mūtīnī wa maiū īngī
nīkana aye. Andū nīmoonie nzale mūtīnī na
meesilya nī ūmwe wa tūvīsī twa ndūanī.



Andũ nĩmaendie kwona nũũ ũla walĩsĩte mũtĩnĩ wa
maiũ. Maseng'a kwona nĩ ngũlĩ yĩkĩite ngũa sya
kavĩsĩ. Nzale nĩwatũlĩile nthĩ na asemba aendete
wiionĩ.





Andũ vamwe na ngitĩ nĩmamũsembanisye nzale.
Nzale nĩwasembie alika kĩthekanĩ ekĩite ila ngũa.





Nzale ndaĩ na vaati nzeo nũndũ ndaaya maiũ.
Nĩwekalile na nzaa ãngĩ. Andu nĩmaendeeie na
kũmũmantha na kũmantha ngũa syoo. Mbaitũ
mwaaona ngũĩ yĩkĩite mũvũtĩ na sati?!